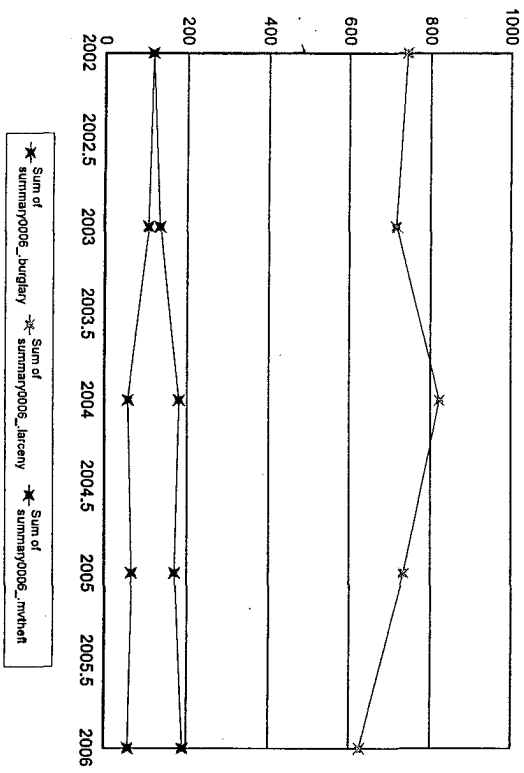
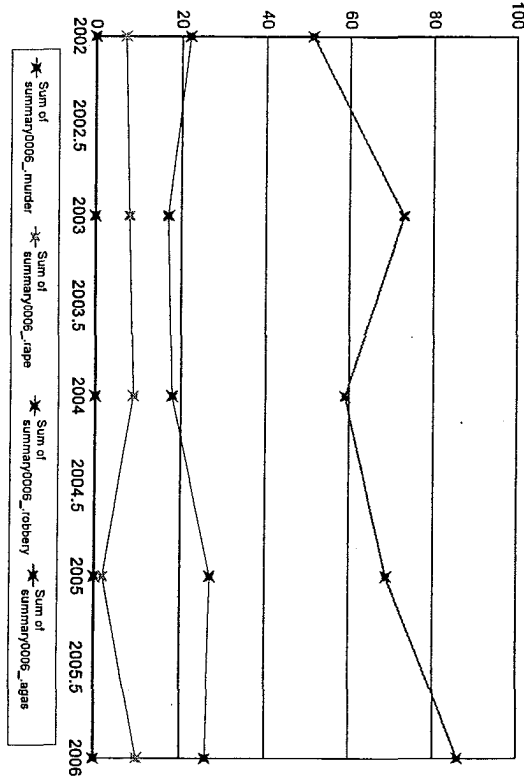


Salem

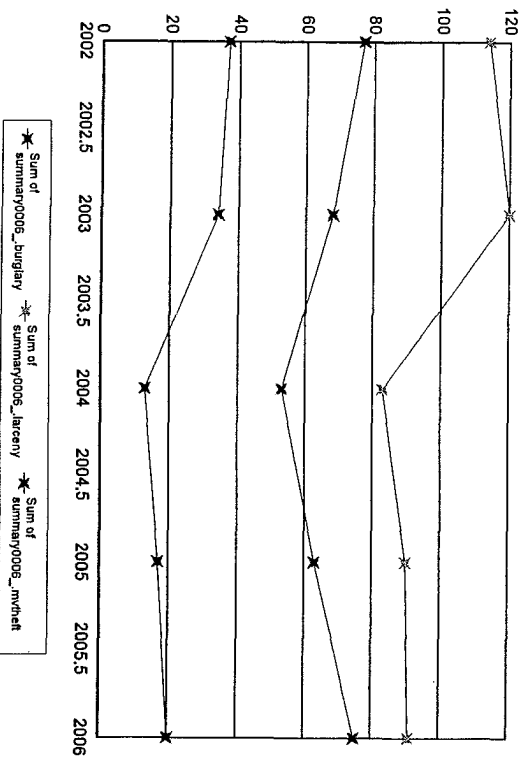
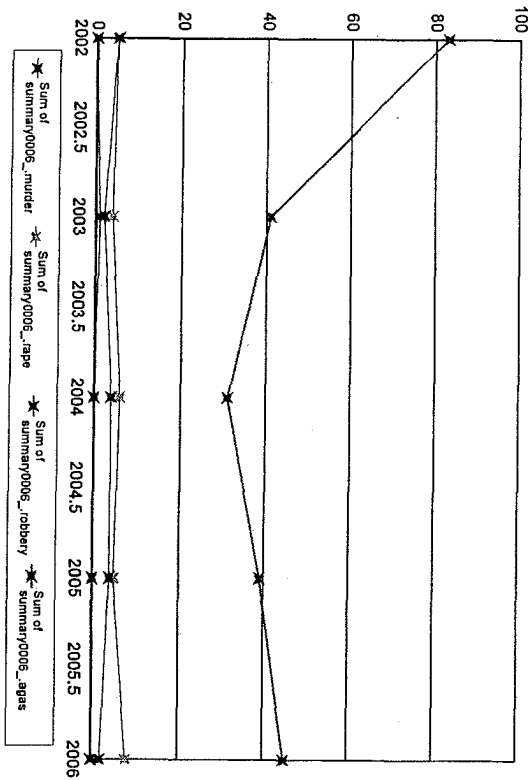
Months Reporting	Violent	Murder	Rape	Robbery	Total W/Gun	% Gun	Aggrav. Assault	% Gun	Property	Burglary	Larceny	MVTheft
2002	12	80	0	22	8	36.36	51	0.00	977	117	743	117
2003	12	98	0	17	3	17.65	73	0.00	959	135	717	107
2004	12	86	0	18	5	27.78	59	0.00	1,062	181	823	58
2005	12	98	0	27	11	40.74	69	0.00	973	171	735	67
2006	12	122	0	26	9	34.62	86	0.00	877	191	627	59



Notes on data: "Months Reporting" indicate the number of months of data received from this agency; "Violent" is the sum of the number of Murder, Rape, Total Robbery and Total Aggravated Assaults; "Property" is the sum of Burglary, Larceny, and Motor Vehicle Theft. If "NIBRS Reporting Agency?" is "Y", then more detailed crime and incident data is available from this agency.

Salisbury

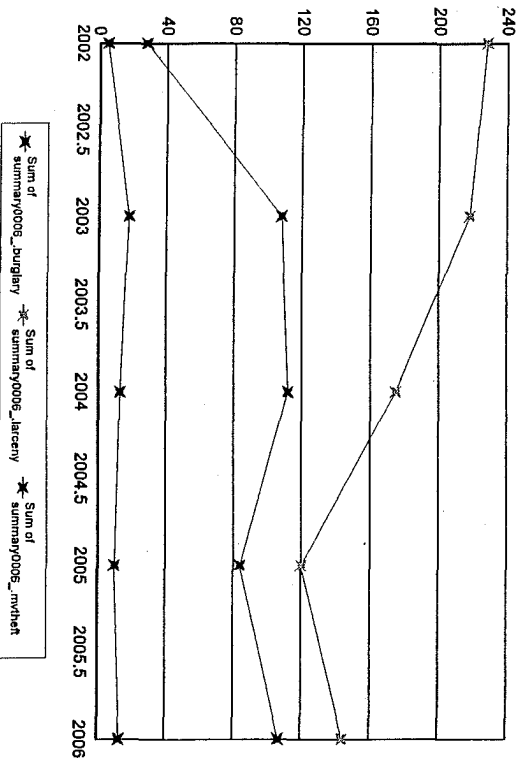
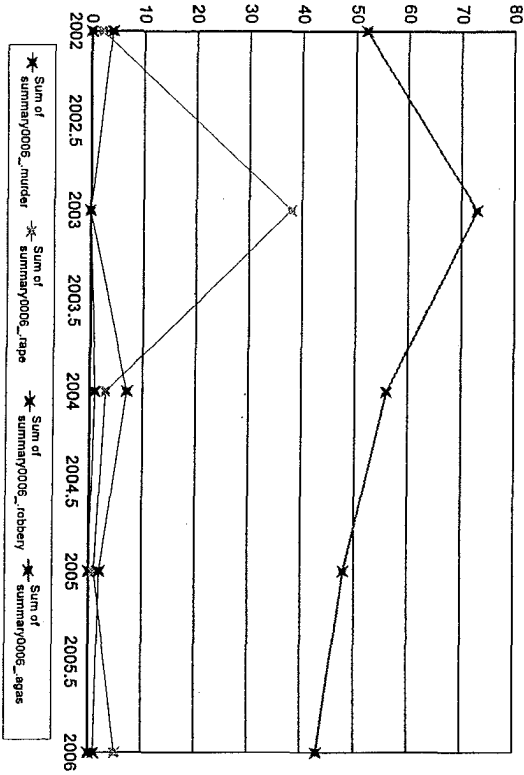
Months Reporting	Violent	Murder	Rape	Robbery	Total W/Gun	% Gun	Aggrav. Assault	Total W/Gun	% Gun	Property Burglary	Larceny	MV Theft
2002	93	0	5	5	1	20.00	83	0	0.00	228	114	37
2003	48	1	4	2	0	0.00	41	5	12.20	222	120	34
2004	41	0	6	4	0	0.00	31	1	3.23	149	53	13
2005	48	0	5	4	1	25.00	39	2	5.13	170	63	17
2006	55	0	8	2	0	0.00	45	1	2.22	186	75	20



Notes on data: "Months Reporting" indicate the number of months of data received from this agency; "Violent" is the sum of the number of Murder, Rape, Total Robbery and Total Aggravated Assaults; "Property" is the sum of Burglary, Larceny, and Motor Vehicle Theft. If "NIBRS Reporting Agency?" is "Y", then more detailed crime and incident data is available from this agency.

Sandwich

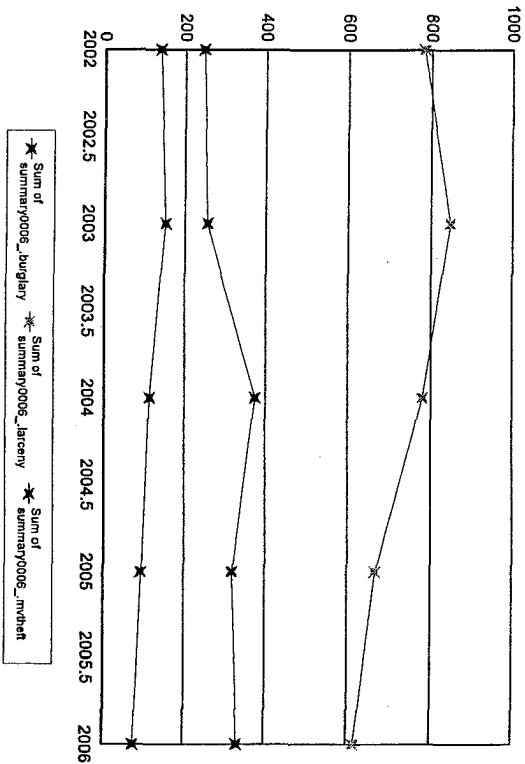
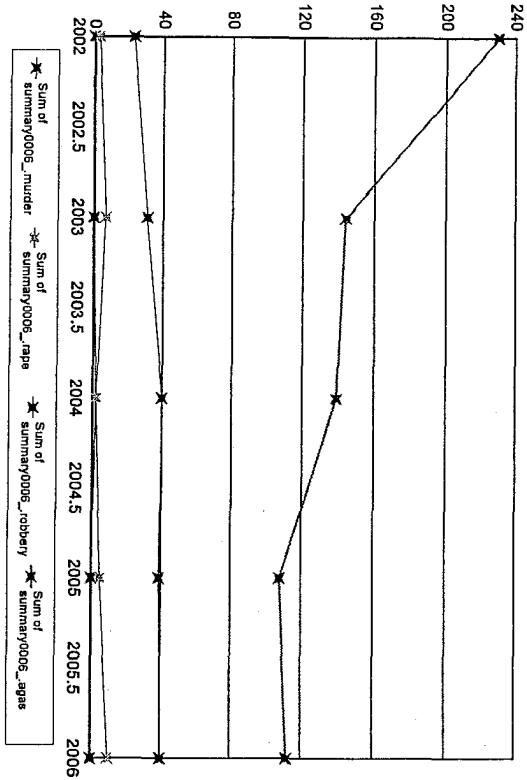
Months Reporting	Violent	Murder	Rape	Robbery		Aggrav. Assault	Gun	Property	Burglary	Larceny	MVTheft
				Total	W/Gun						
2002	58	0	2	4	0	52	0	261	28	228	5
2003	111	0	38	0	0	73	5	344	108	218	18
2004	67	1	3	7	0	56	0	300	112	175	13
2005	51	0	1	2	0	48	1	214	84	120	10
2006	49	0	5	1	0	43	2	264	107	144	13



Notes on data: "Months Reporting" indicate the number of months of data received from this agency; "Violent" is the sum of the number of Murder, Rape, Total Robbery and Total Aggravated Assaults; "Property" is the sum of Burglary, Larceny, and Motor Vehicle Theft. If "NIBRS Reporting Agency?" is "Y", then more detailed crime and incident data is available from this agency.

Saugus

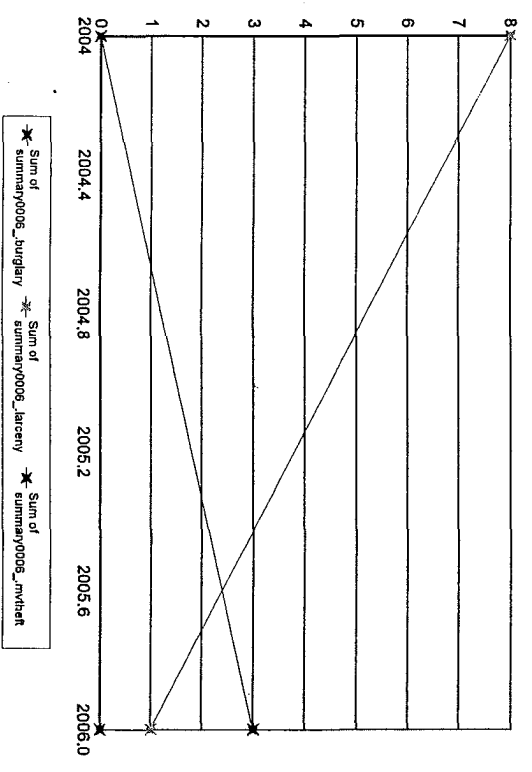
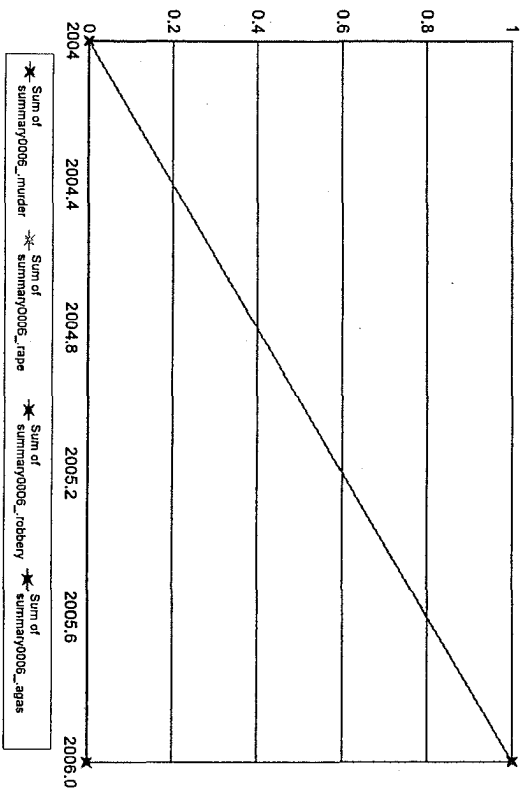
Months Reporting	Violent	Murder	Rape	Robbery Total	W/Gun %	Aggrav. Assault Total	W/Gun %	Property	Burglary	Larceny	MV/Theft
2002	256	0	3	23	8 34.78	230	11 4.78	1,169	247	783	139
2003	182	0	7	31	13 41.94	144	17 11.81	1,255	256	847	152
2004	183	2	2	40	12 30.00	139	2 1.44	1,269	375	780	114
2005	152	0	5	39	12 30.77	108	4 3.70	1,083	320	668	95
2006	162	0	10	40	10 25.00	112	3 2.68	1,027	333	617	77



Notes on data: "Months Reporting" indicate the number of months of data received from this agency; "Violent" is the sum of the number of Murder, Rape, Total Robbery and Total Aggravated Assaults; "Property" is the sum of Burglary, Larceny, and Motor Vehicle Theft; "If "NIBRS Reporting Agency?" is "Y", then more detailed crime and incident data is available from this agency.

Savoy

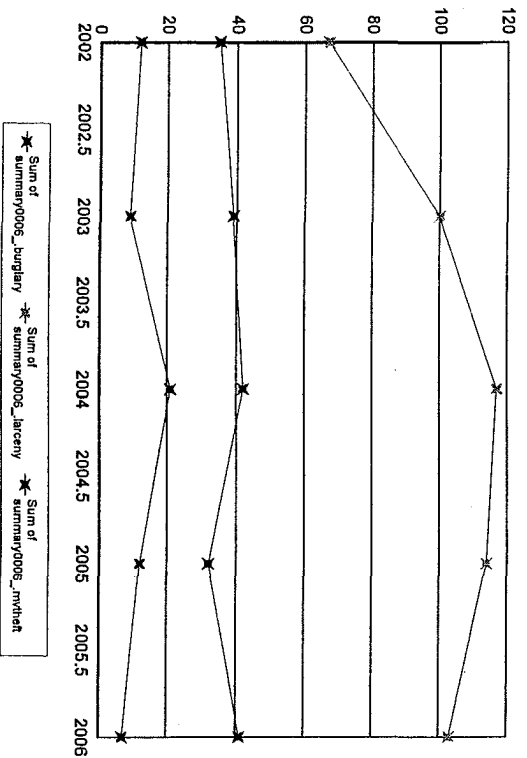
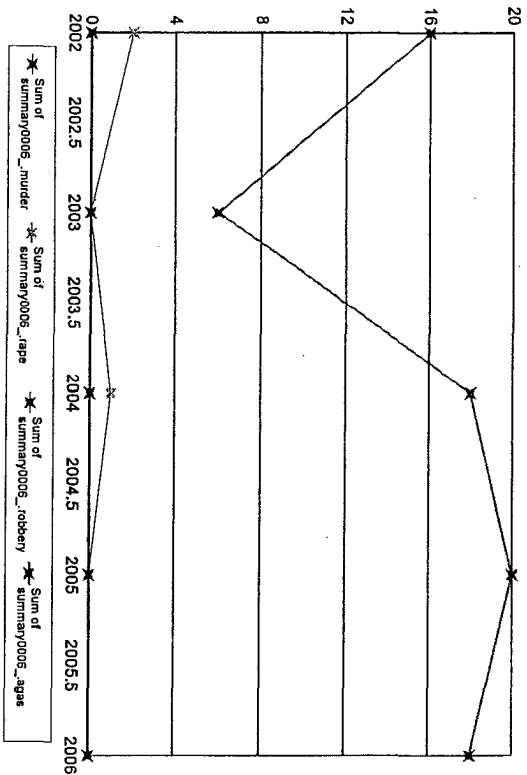
Months Reporting	Violent	Murder	Rape	Robbery Total W/Gun	% Gun	Aggrav. Assault Total W/Gun	% Gun	Property Burglary	Larceny	MVTheft
2004	1	0	0	0	0.00	0	0.00	8	8	0
2006	12	2	0	0	0.00	1	0.00	4	3	1



Notes on data: "Months Reporting" indicate the number of months of data received from this agency; "Violent" is the sum of the number of Murder, Rape, Total robbery and Total Aggravated Assaults; "Property" is the sum of Burglary, Larceny, and Motor Vehicle Theft. If "NIBRS Reporting Agency?" is "Y", then more detailed crime and incident data is available from this agency.

Scituate

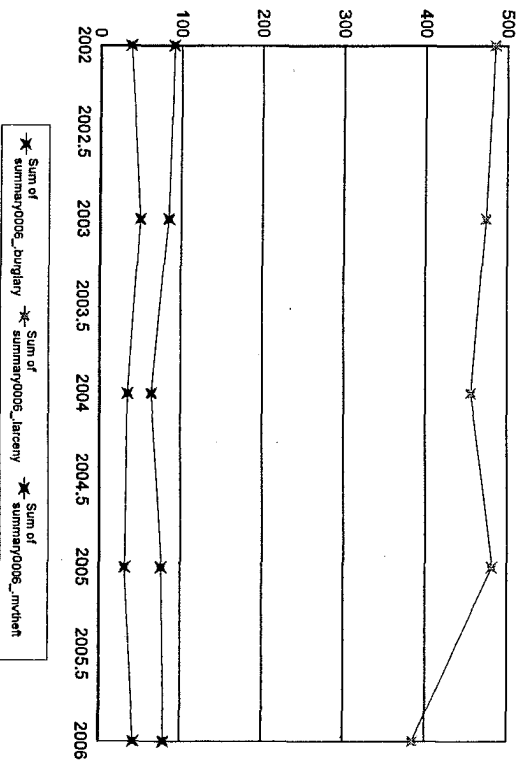
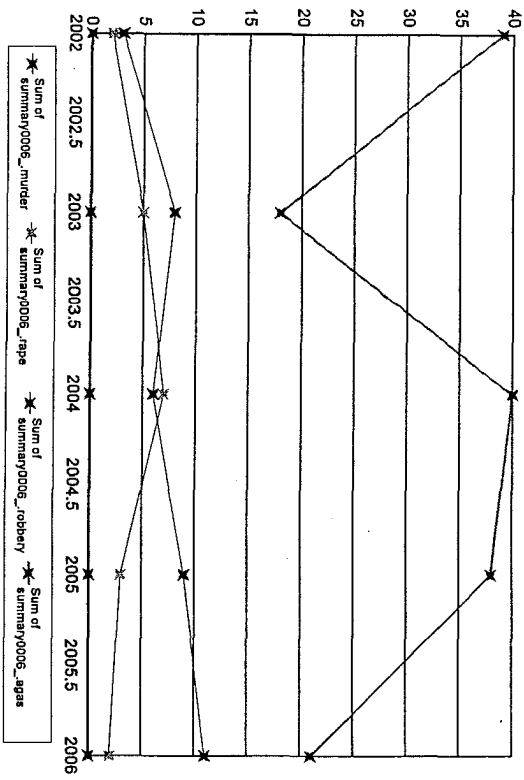
Months Reporting	Violent	Murder	Rape	Robbery Total	W/Gun %	Aggrav. Assault Total	W/Gun %	Property Burglary	Larceny	MVTheft
2002	18	0	2	0	0.00	16	0.00	114	35	67
2003	6	0	0	0	0.00	6	0.00	148	39	100
2004	19	0	1	0	0.00	18	5.56	180	42	117
2005	20	0	0	0	0.00	20	0.00	158	32	114
2006	18	0	0	0	0.00	18	0.00	151	41	103



Notes on data: "Months Reporting" indicate the number of months of data received from this agency; "Violent" is the sum of the number of Murder, Rape, Total Robbery and Total Aggravated Assaults; "Property" is the sum of Burglary, Larceny, and Motor Vehicle Theft. If "NIBRS Reporting Agency?" is "Y", then more detailed crime and incident data is available from this agency.

Seekonk

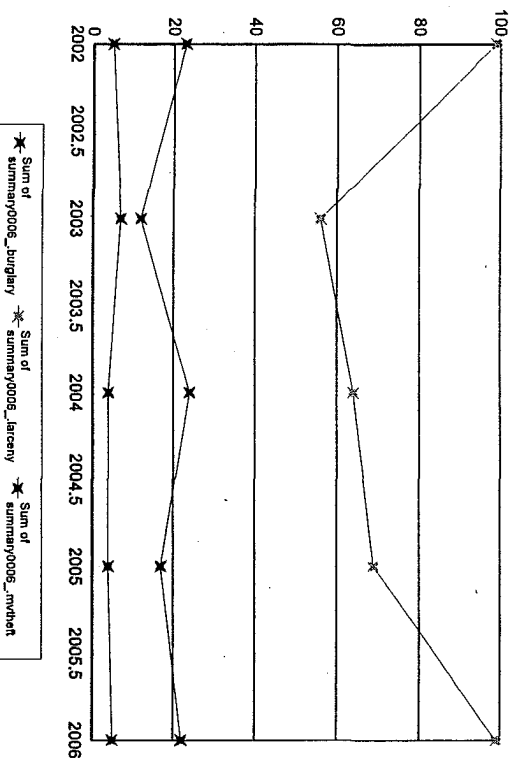
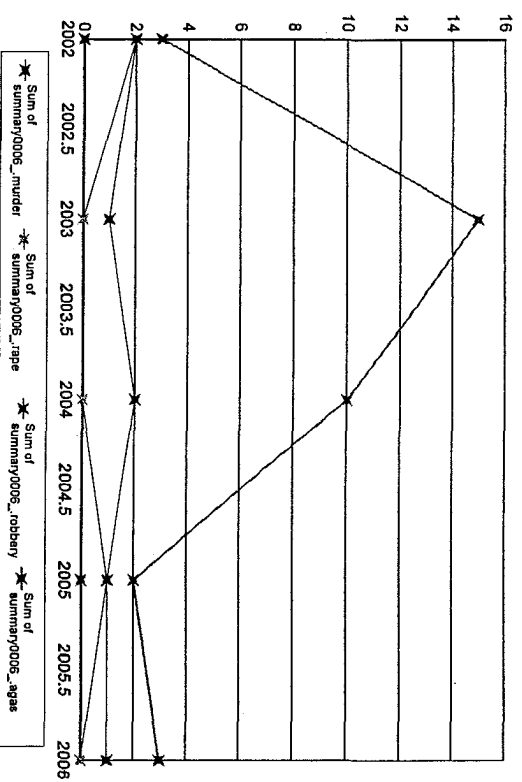
Months Reporting	Violent	Murder	Rape	Robbery	Total W/Gun	% Gun	Aggrav. Assault	% Gun	Property	Burglary	Larceny	MV Theft	
2002	44	0	2	3	0	0.00	39	1	2.56	614	91	485	38
2003	31	0	5	8	4	50.00	18	1	5.56	609	85	474	50
2004	53	0	7	6	1	16.67	40	4	10.00	555	64	456	35
2005	50	0	3	9	1	11.11	38	1	2.63	591	77	482	32
2006	34	0	2	11	4	36.36	21	0	0.00	508	80	385	43



Notes on data: "Months Reporting" indicate the number of months of data received from this agency; "Violent" is the sum of the number of Murder, Rape, Total Robbery and Total Aggravated Assaults; "Property" is the sum of Burglary, Larceny, and Motor Vehicle Theft; "If "NIBRS Reporting Agency?" is "Y", then more detailed crime and incident data is available from this agency.

Sharon

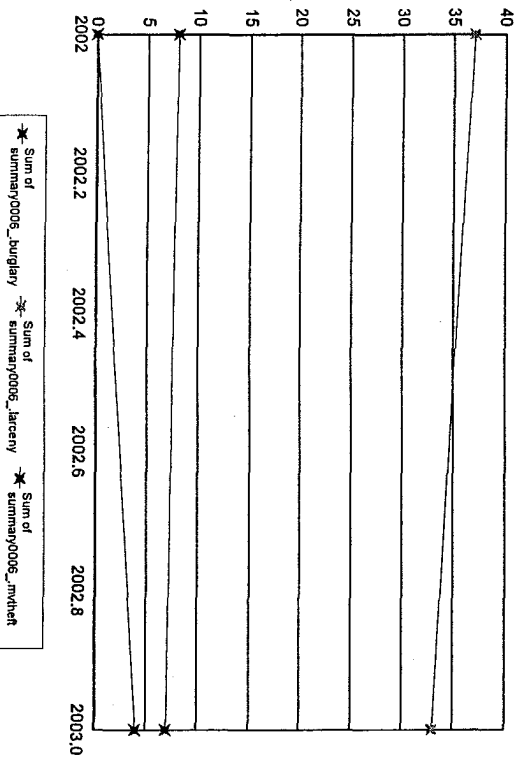
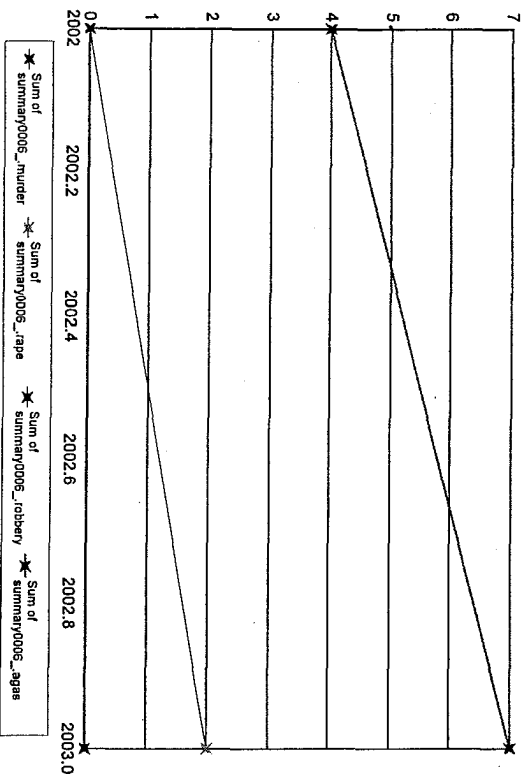
Months Reporting	Violent	Murder	Rape	Robbery	Total W/Gun	% Gun	Aggrav Assault	Total W/Gun	% Gun	Property Burglary	Larceny	MVTheft
2002	7	0	2	2	0	0.00	3	0	0.00	127	23	99
2003	16	0	0	1	1	100.00	15	2	13.33	75	12	56
2004	12	0	0	2	1	50.00	10	0	0.00	92	24	64
2005	12	0	1	1	0	0.00	2	0	0.00	90	17	69
2006	12	4	0	1	0	0.00	3	0	0.00	126	22	99



Notes on data: "Months Reporting" indicate the number of months of data received from this agency; "Violent" is the sum of the number of Murder, Rape, Total Robbery and Total Aggravated Assaults; "Property" is the sum of Burglary, Larceny, and Motor Vehicle Theft. If "NIBRS Reporting Agency?" is "Y", then more detailed crime and incident data is available from this agency.

Sheffield

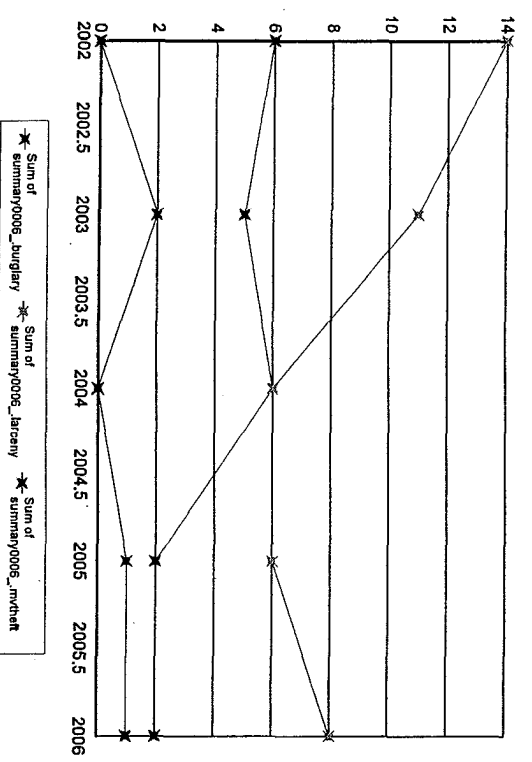
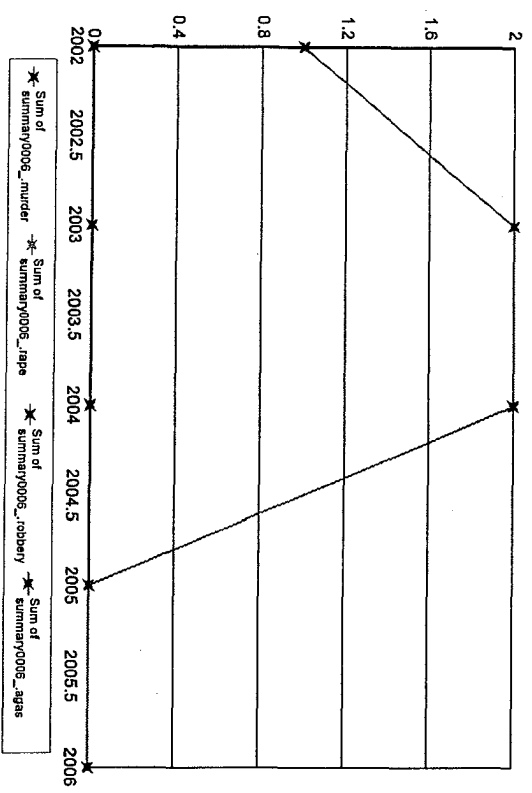
Months Reporting	Violent	Murder	Rape	Robbery Total	W/Gun	% Gun	Aggrav. Assault Total	% W/Gun	% Gun	Property	Burglary	Larceny	MVTheft
2002 12	4	0	0	0	0	0.00	4	0	0.00	45	8	37	0
2003 12	9	0	2	0	0	0.00	7	0	0.00	44	7	33	4



Notes on data: "Months Reporting" indicate the number of months of data received from this agency. "Violent" is the sum of the number of Murder, Rape, Total Robbery and Total Aggravated Assaults; "Property" is the sum of Burglary, Larceny, and Motor Vehicle Theft. " If "NIBRS Reporting Agency?" is "Y", then more detailed crime and incident data is available from this agency.

Shelburne

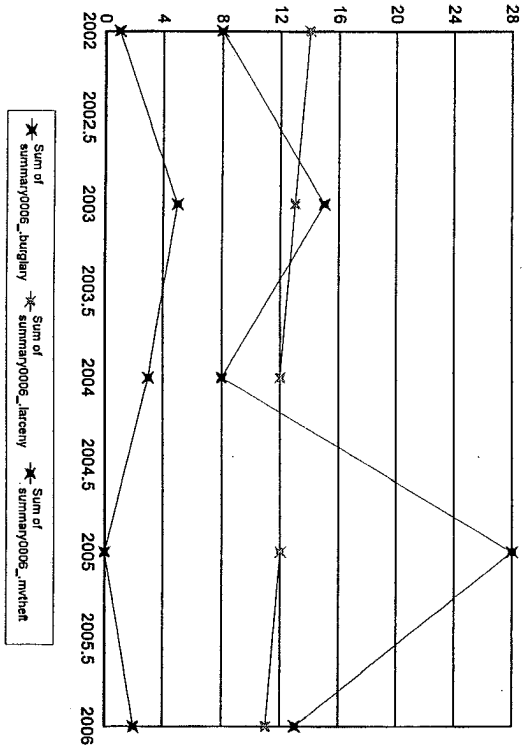
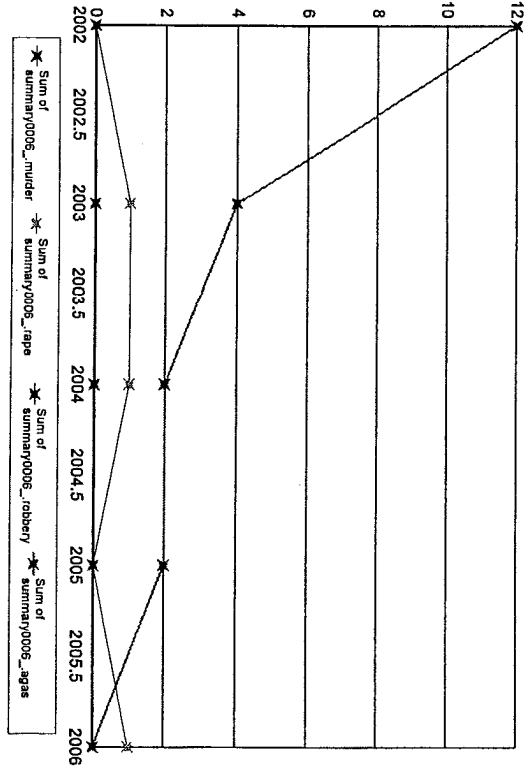
Months Reporting	Violent	Murder	Rape	Robbery Total	W/Gun %	Aggrav. Assault Total	W/Gun %	Property Burglary	Larceny	MV Theft
2002	11	1	0	0	0.00	1	0.00	20	14	0
2003	9	2	0	0	0.00	2	0.00	18	11	2
2004	8	2	0	0	0.00	2	0.00	12	6	0
2005	9	0	0	0	0.00	0	0.00	9	6	1
2006	8	0	0	0	0.00	0	0.00	11	8	1



Notes on data: "Months Reporting" indicate the number of months of data received from this agency; "Violent" is the sum of the number of Murder, Rape, Total Robbery and Total Aggravated Assaults; "Property" is the sum of Burglary, Larceny, and Motor Vehicle Theft. If "NIBRS Reporting Agency?" is "Y", then more detailed crime and incident data is available from this agency.

Sherborn

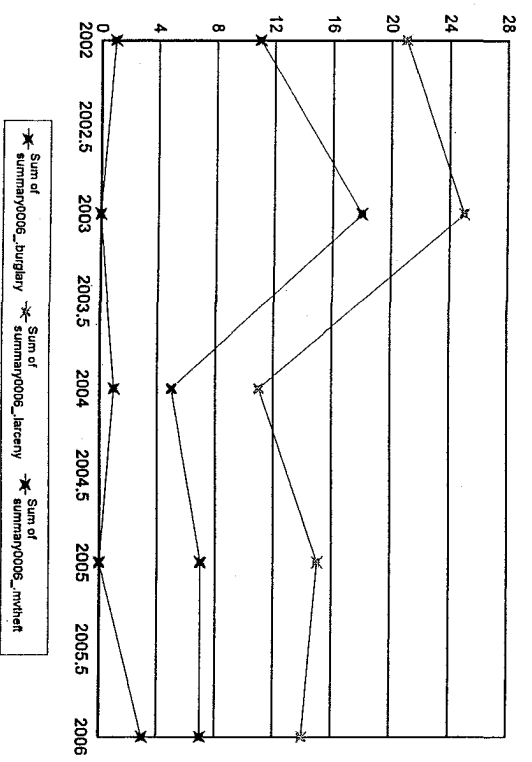
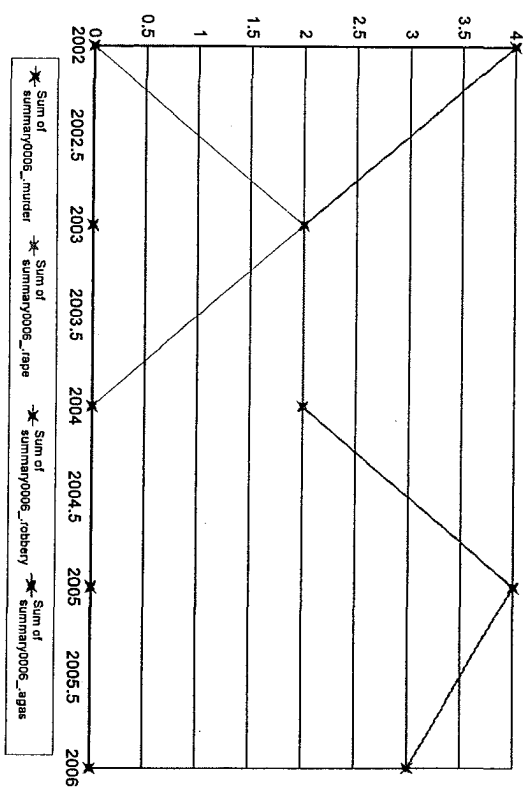
Months Reporting	Violent	Murder	Rape	Robbery		Aggrav. Assault		Property Burglary	Larceny	MVTheft
				Total	W/Gun	Total	W/Gun			
2002	12	0	0	0	0.00	12	0 0.00	23	14	1
2003	11	0	1	0	0.00	4	1 25.00	33	13	5
2004	10	0	1	0	0.00	2	0 0.00	23	12	3
2005	10	0	0	0	0.00	2	0 0.00	40	12	0
2006	11	1	1	0	0.00	0	0 0.00	26	13	2



Notes on data: "Months Reporting" indicate the number of months of data received from this agency; "Violent" is the sum of the number of Murder, Rape, Total Robbery and Total Aggravated Assaults; "Property" is the sum of Burglary, Larceny, and Motor Vehicle Theft; "If "NIBRS Reporting Agency?" is "Y", then more detailed crime and incident data is available from this agency.

Shirley

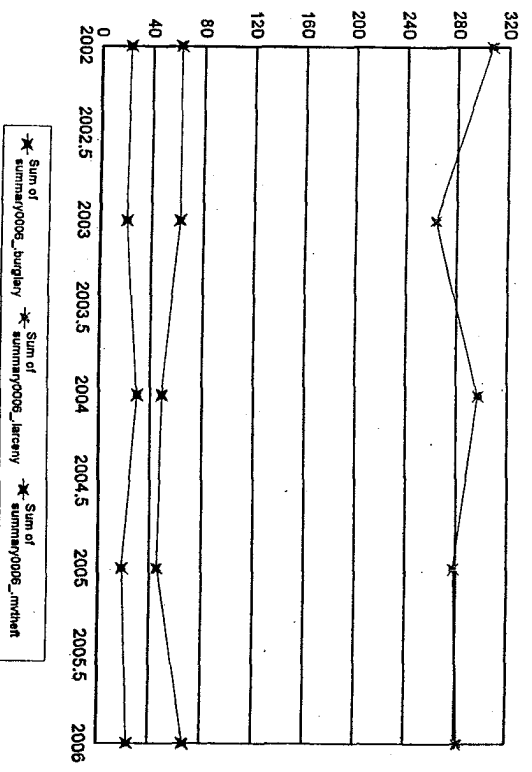
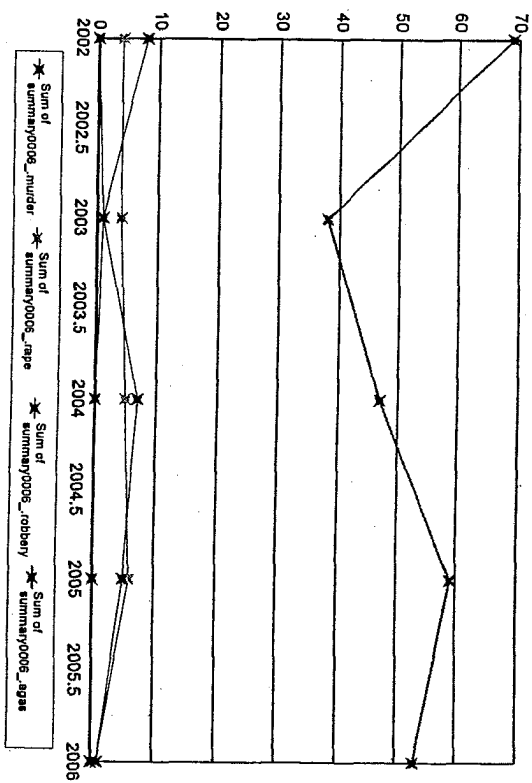
Months Reporting	Violent	Murder	Rape	Robbery	Total W/Gun	% Gun	Aggrav. Assault	% Gun	Property Burglary	Larceny	MVTheft
2002	4	0	0	0	0	0.00	4	125.00	33	11	21
2003	4	0	2	0	0	0.00	2	0.00	43	18	25
2004	2	0	0	0	0	0.00	2	0.00	17	5	11
2005	4	0	0	0	0	0.00	4	0.00	22	7	15
2006	3	0	0	0	0	0.00	3	0.00	24	7	14



Notes on data: "Months Reporting" indicate the number of months of data received from this agency; "Violent" is the sum of the number of Murder, Rape, Total Robbery and Total Aggravated Assaults; "Property" is the sum of Burglary, Larceny, and Motor Vehicle Theft. If "NIBRS Reporting Agency?" is "Y", then more detailed crime and incident data is available from this agency.

Somerset

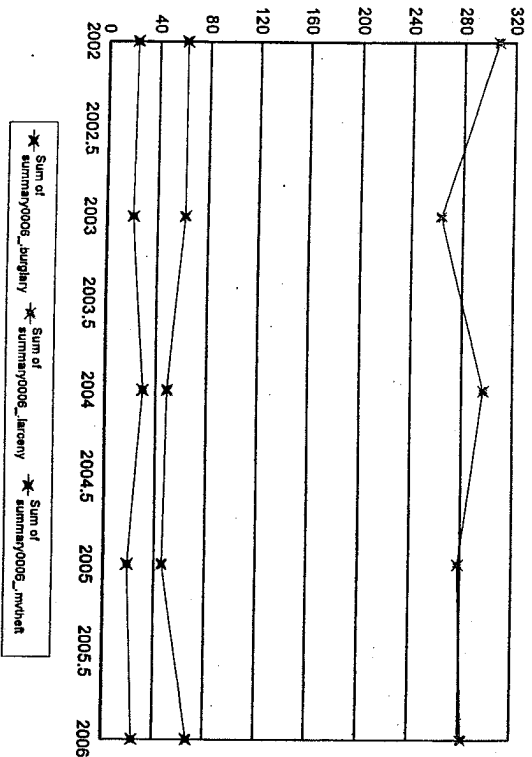
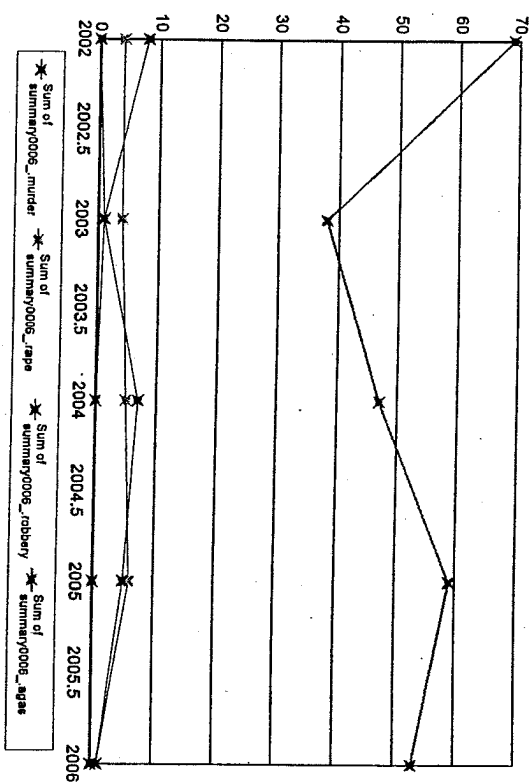
Months Reporting	Violent	Murder	Rape	Robbery	Total W/Gun	% Gun	Aggrav. Assault	% Gun	Property	Burglary	Larceny	MVTheft		
2002	12	81	0	4	8	3	37.50	69	3	4.35	392	62	307	23
2003	12	44	1	4	1	0	0.00	38	3	7.89	346	62	263	21
2004	12	59	0	5	7	2	28.57	47	0	0.00	376	49	297	30
2005	12	70	0	6	5	1	20.00	59	2	3.39	343	46	278	19
2006	12	55	0	1	1	0	0.00	53	2	3.77	373	67	282	24



Notes on data: "Months Reporting" indicate the number of months of data received from this agency; "Violent" is the sum of the number of Murder, Rape, Total Robbery and Total Aggravated Assaults; "Property" is the sum of Burglary, Larceny, and Motor Vehicle Theft. If "NIBRS Reporting Agency?" is "Y", then more detailed crime and incident data is available from this agency.

Somerset

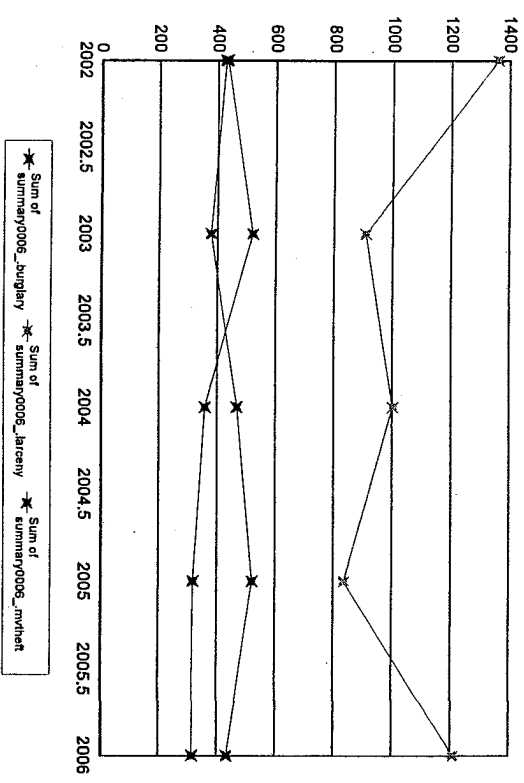
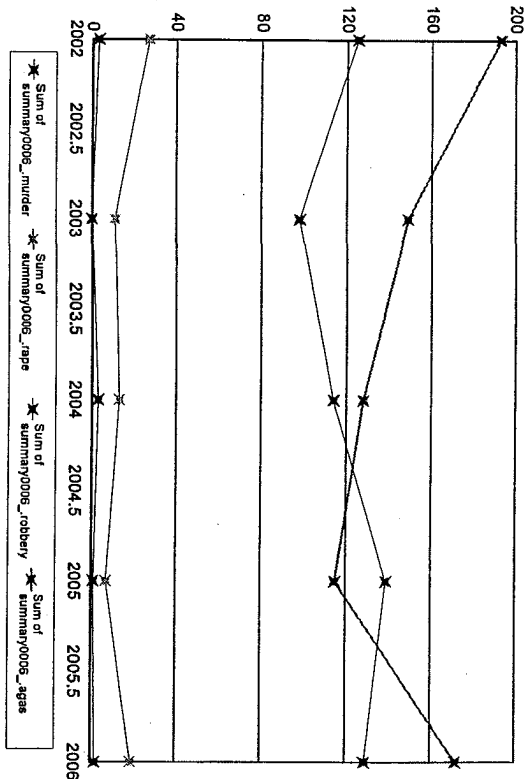
Months Reporting	Violent	Murder	Rape	Robbery Total	W/Gun %	Aggrav. Assault Total	W/Gun %	Property	Burglary	Larceny	MVTheft
2002	12	81	0	8	3 37.50	69	3 4.35	392	62	307	23
2003	12	44	1	1	0 0.00	38	3 7.89	346	62	263	21
2004	12	59	0	7	2 28.57	47	0 0.00	376	49	297	30
2005	12	70	0	5	1 20.00	59	2 3.39	343	46	278	19
2006	12	55	0	1	0 0.00	53	2 3.77	373	67	282	24



Notes on data: "Months Reporting" indicate the number of months of data received from this agency; "Violent" is the sum of the number of Murder, Rape, Total Robbery and Total Aggravated Assaults; "Property" is the sum of Burglary, Larceny, and Motor Vehicle Theft; "If "NIBRS Reporting Agency?" is "Y", then more detailed crime and incident data is available from this agency.

Somerville

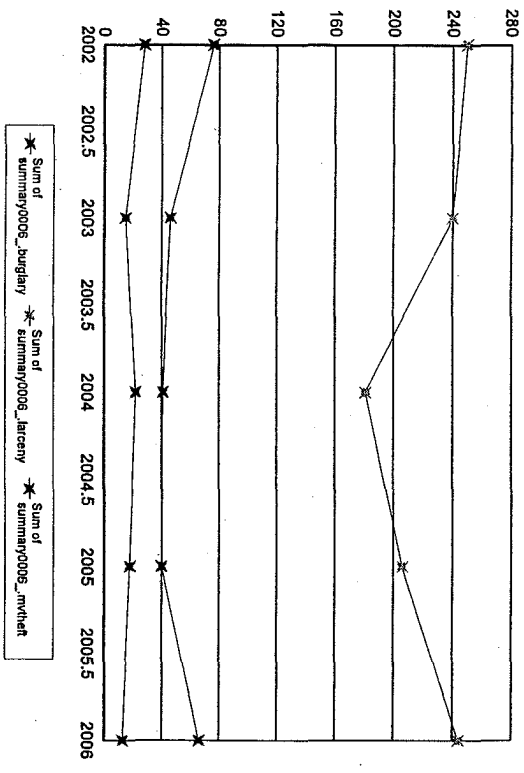
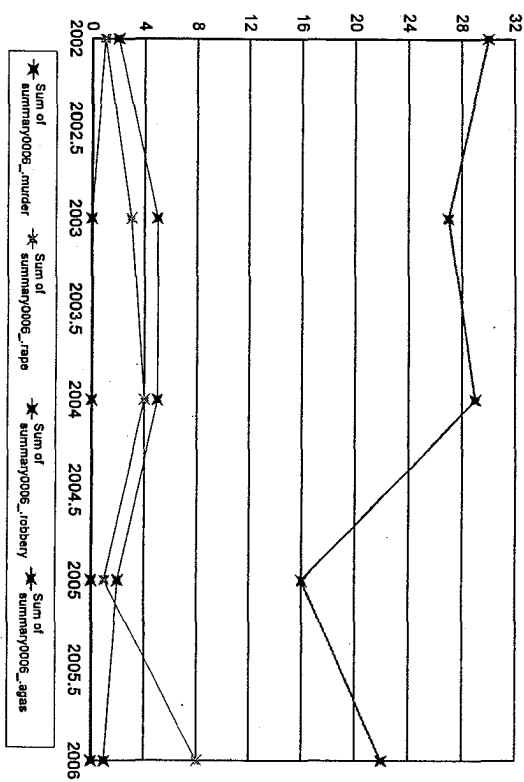
Months Reporting	Violent	Murder	Rape	Robbery Total	W/Gun	% Gun	Aggrav. Assault Total	W/Gun	% Gun	Property Burglary	Larceny	MV Theft
2002	348	3	27	125	40	32.00	193	12	6.22	2,221	427	1,361
2003	258	0	11	98	23	23.47	149	5	3.36	1,807	378	908
2004	258	3	13	114	28	24.56	128	9	7.03	1,829	468	1,002
2005	262	1	7	139	31	22.30	115	12	10.43	1,676	521	836
2006	322	2	19	129	30	23.26	172	15	8.72	1,959	434	1,209
												316



Notes on data: "Months Reporting" indicate the number of months of data received from this agency; "Violent" is the sum of the number of Murder, Rape, Total Robbery and Total Aggravated Assaults; "Property" is the sum of Burglary, Larceny, and Motor Vehicle Theft. If "NIBRS Reporting Agency?" is "Y", then more detailed crime and incident data is available from this agency.

South Hadley

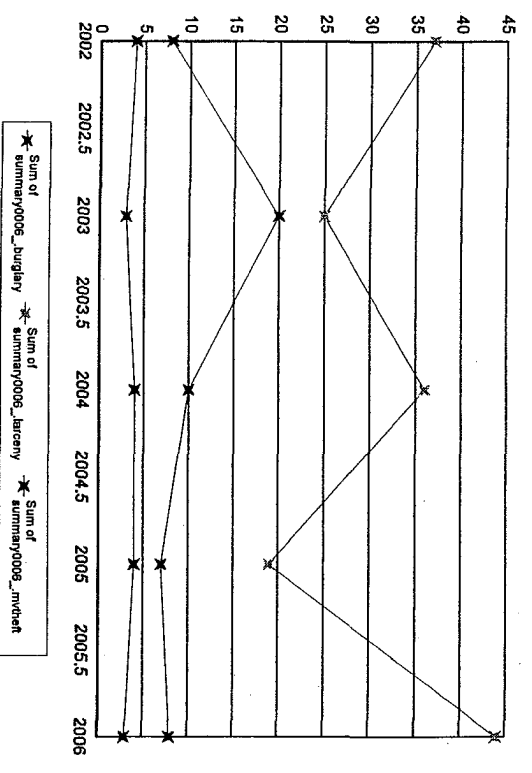
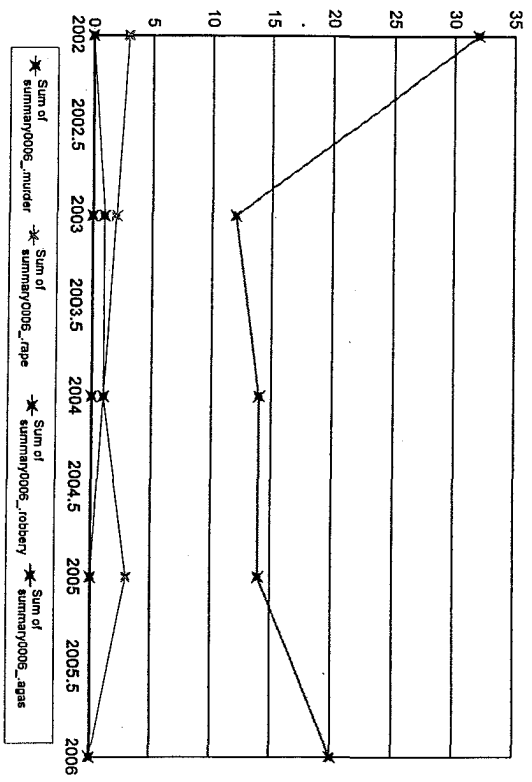
Months Reporting	Violent	Murder	Rape	Robbery	Total W/Gun	% Gun	Aggrav. Assault	Total W/Gun	% Gun	Property Burglary	Larceny	MVTheft
2002	34	1	1	2	1	50.00	30	2	6.67	354	76	250
2003	35	0	3	5	0	0.00	27	0	0.00	301	46	240
2004	38	0	4	5	3	60.00	29	2	6.90	244	41	181
2005	19	0	1	2	0	0.00	16	0	0.00	264	40	206
2006	31	0	8	1	1	1100.00	22	1	4.55	323	66	244



Notes on data: "Months Reporting" indicate the number of months of data received from this agency; "Violent" is the sum of the number of Murder, Rape, Total obbery and Total Aggravated Assaults; "Property" is the sum of Burglary, Larceny, and Motor Vehicle Theft. "If "NIBRS Reporting Agency?" is "Y", then more detailed crime and incident data is available from this agency.

Southampton

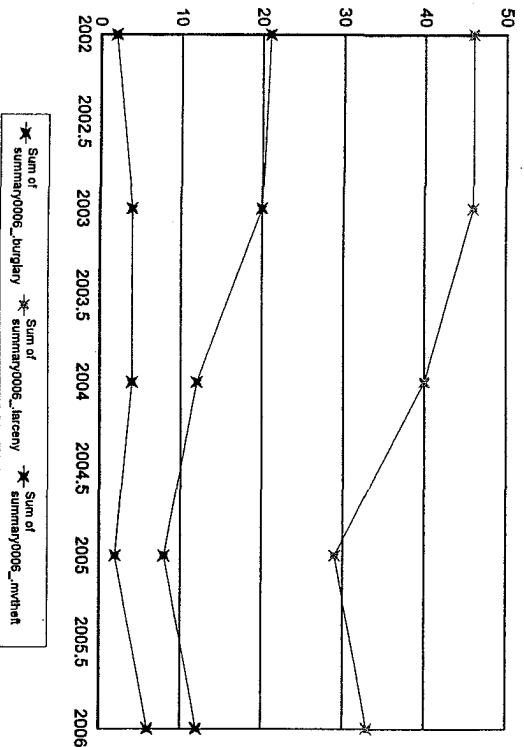
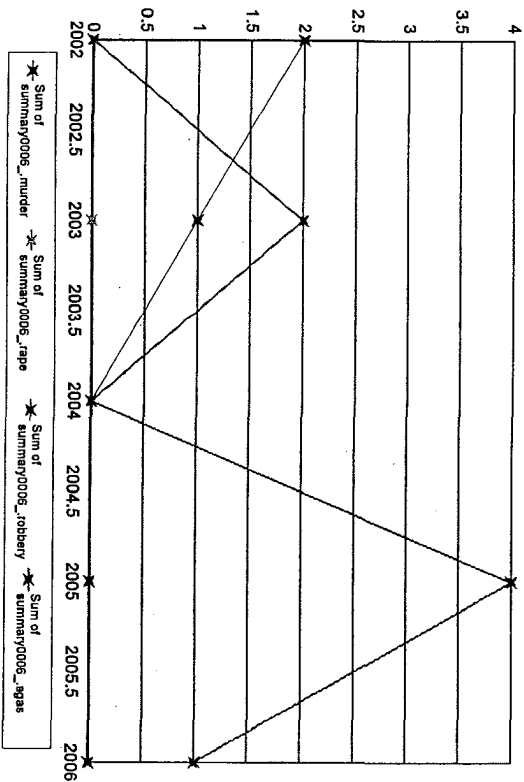
Months Reporting	Violent	Murder	Rape	Robbery Total	W/Gun %	Aggrav. Assault Total	W/Gun %	Property	Burglary	Larceny	MV Theft
2002	12	35	0	0	0.00	32	0.00	49	8	37	4
2003	12	15	0	1	0.00	12	0.00	48	20	25	3
2004	12	16	0	1	1100.00	14	7.14	50	10	36	4
2005	12	17	0	0	0.00	14	0.00	30	7	19	4
2006	12	20	0	0	0.00	20	0.00	55	8	44	3



Notes on data: "Months Reporting" indicate the number of months of data received from this agency. "Violent" is the sum of the number of Murder, Rape, Total Robbery and Total Aggravated Assaults; "Property" is the sum of Burglary, Larceny, and Motor Vehicle Theft. "If "NIBRS Reporting Agency?" is "Y", then more detailed crime and incident data is available from this agency.

Southborough

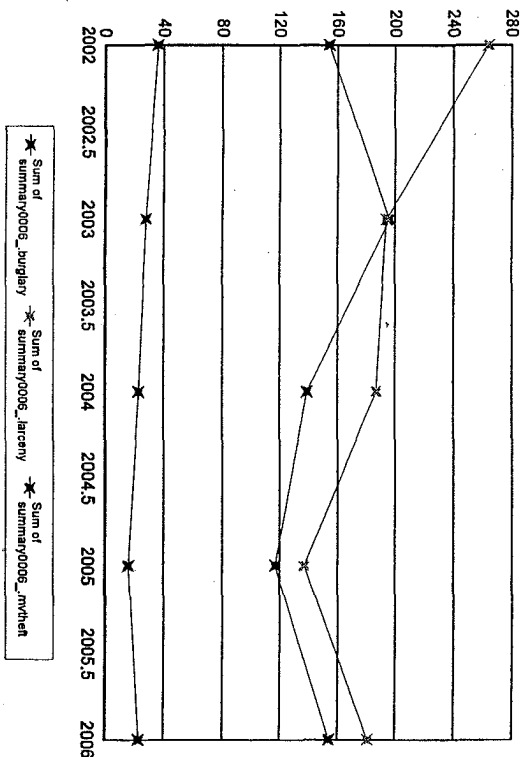
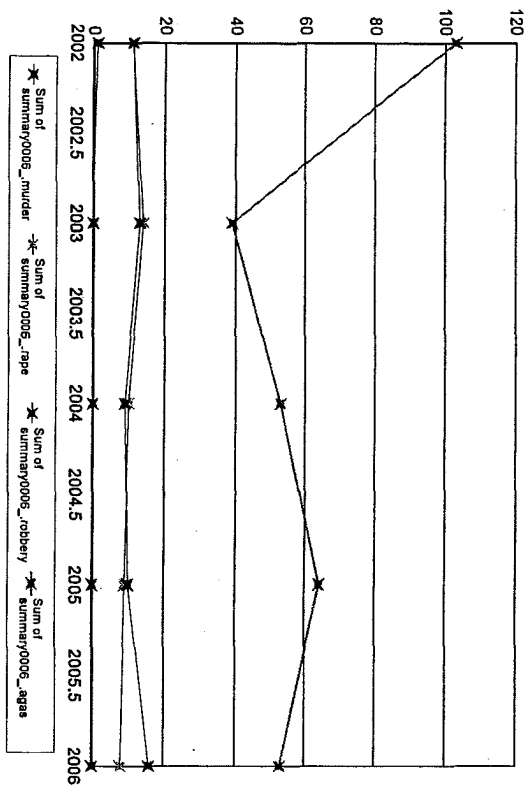
Months Reporting	Violent	Murder	Rape	Robbery		Aggrav. Assault	Gun	Property	Larceny	M/Theft
				Total	W/Gun					
2002	11	2	0	2	1	0	50.00	69	46	2
2003	12	3	0	1	1100.00	2	0.00	70	46	4
2004	12	0	0	0	0	0	0.00	56	40	4
2005	11	4	0	0	0	4	0.00	39	29	2
2006	12	1	0	0	0	1	0.00	51	33	6



Notes on data: "Months Reporting" indicate the number of months of data received from this agency; "Violent" is the sum of the number of Murder, Rape, Total Robbery and Total Aggravated Assaults; "Property" is the sum of Burglary, Larceny, and Motor Vehicle Theft; "Y" is "Y", then more detailed crime and incident data is available from this agency.

Southbridge

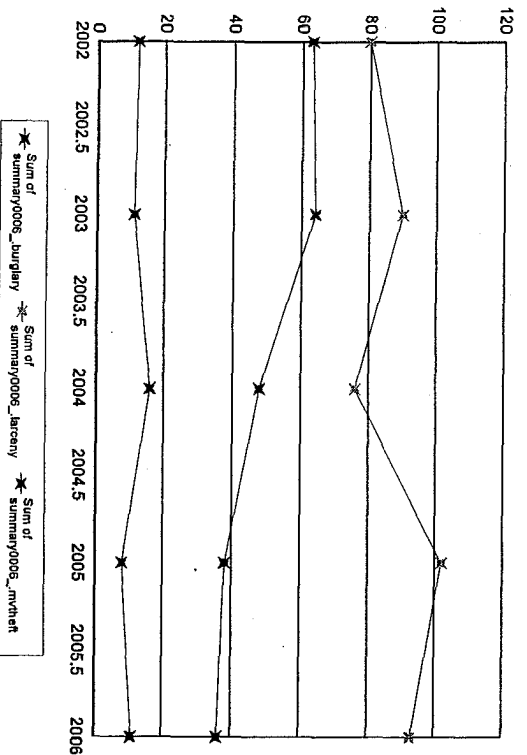
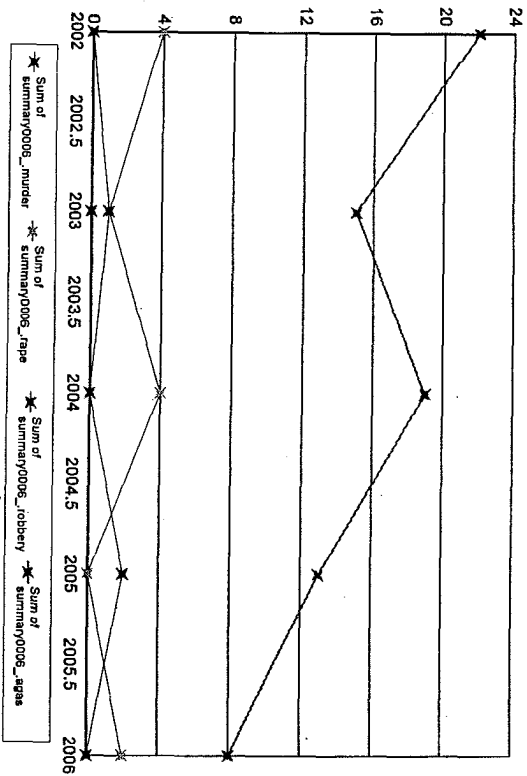
Months Reporting	Violent	Murder	Rape	Robbery Total	W/Gun %	Aggrav. Assault Total	W/Gun %	Property	Burglary	Larceny	MVTheft
2002	126	1	11	11	3 27.27	103	4 3.88	454	154	264	36
2003	66	0	14	13	5 38.46	39	3 7.69	418	196	194	28
2004	72	0	10	9	0 0.00	53	8 15.09	349	139	187	23
2005	83	0	9	10	0 0.00	64	3 4.69	270	117	137	16
2006	77	0	8	16	1 6.25	53	1 1.89	358	154	181	23



Notes on data: "Months Reporting" indicate the number of months of data received from this agency. "Violent" is the sum of the number of Murder, Rape, Total Robbery and Total Aggravated Assaults; "Property" is the sum of Burglary, Larceny, and Motor Vehicle Theft. If "NIBRS Reporting Agency?" is "Y", then more detailed crime and incident data is available from this agency.

Southwick

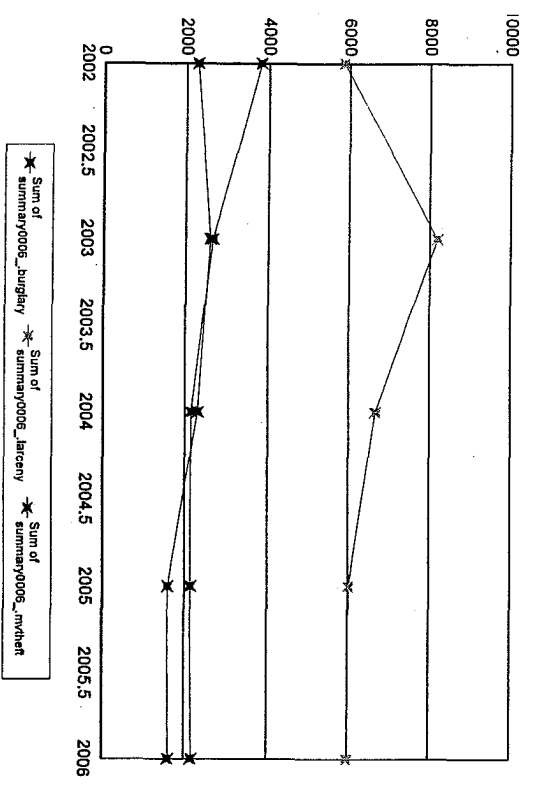
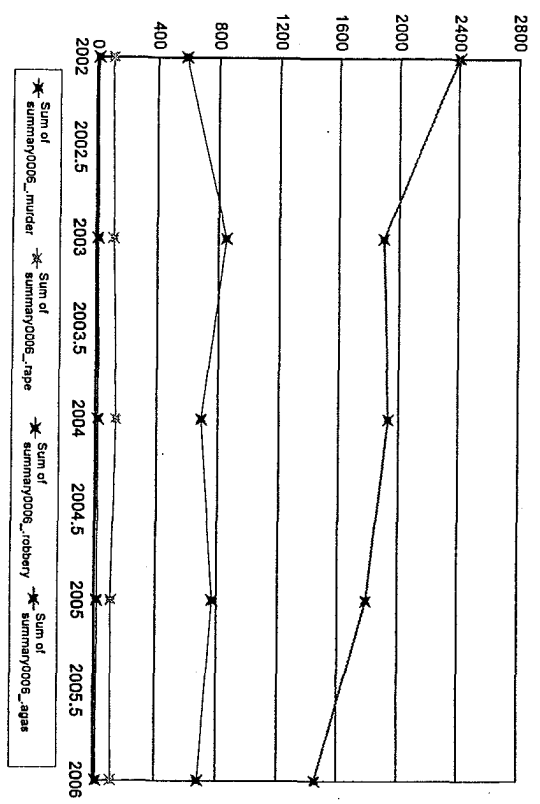
Months Reporting	Violent	Murder	Rape	Robbery	Total W/Gun	% Gun	Aggrav. Assault	% Gun	Property	Burglary	Larceny	MV Theft
2002	12	26	0	4	0	0.00	22	0.00	155	63	80	12
2003	12	17	0	1	1	0.00	15	2 13.33	165	64	90	11
2004	12	23	0	4	0	0.00	19	0.00	140	48	76	16
2005	12	15	0	0	2	0.00	13	1 7.69	148	38	102	8
2006	12	10	0	2	0	0.00	8	0.00	140	36	93	11



Notes on data: "Months Reporting" indicate the number of months of data received from this agency. "Violent" is the sum of the number of Murder, Rape, Total Robbery and Total Aggravated Assaults; "Property" is the sum of Burglary, Larceny, and Motor Vehicle Theft. "If "NIBRS Reporting Agency?" is "Y", then more detailed crime and incident data is available from this agency.

Springfield

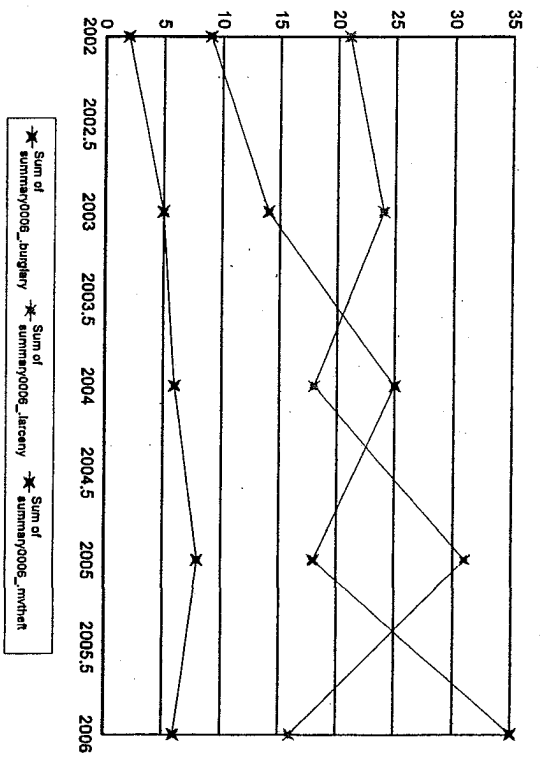
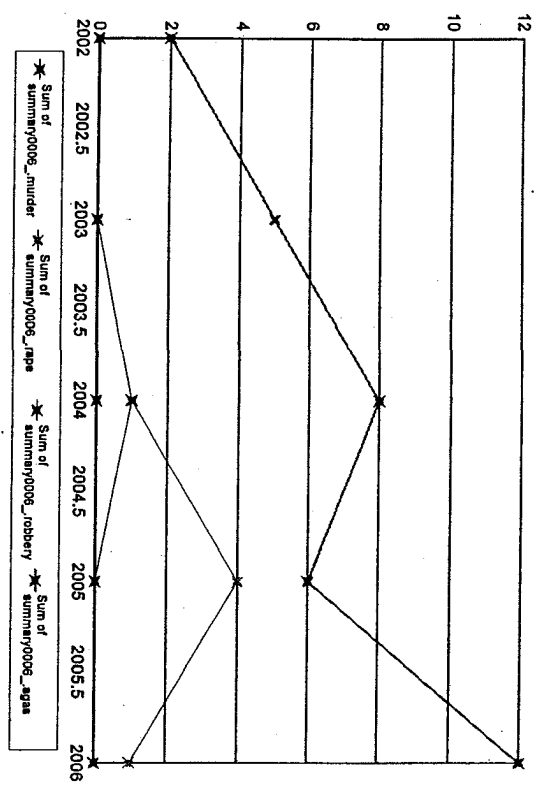
Months Reporting	Violent	Murder	Rape	Robbery	Total W/Gun	% Gun	Aggrav. Assault	% Gun	Property	Burglary	Larceny	MVTheft
2002	3,107	12	108	586	141	24.06	2,401	282	11,959	3,811	5,870	2,278
2003	2,884	14	117	853	322	37.75	1,900	435	13,445	2,660	8,191	2,594
2004	2,775	17	135	692	251	36.27	1,931	352	11,134	2,153	6,670	2,311
2005	2,692	18	110	772	265	34.33	1,792	323	9,754	2,144	6,018	1,592
2006	2,263	15	115	682	195	28.59	1,451	286	9,791	2,179	5,995	1,617



Notes on data: "Months Reporting" indicate the number of months of data received from this agency. "Violent" is the sum of the number of Murder, Rape, Total Robbery and Total Aggravated Assaults; "Property" is the sum of Burglary, Larceny, and Motor Vehicle Theft. If "NIBRS Reporting Agency?" is "Y", then more detailed crime and incident data is available from this agency.

Sterling

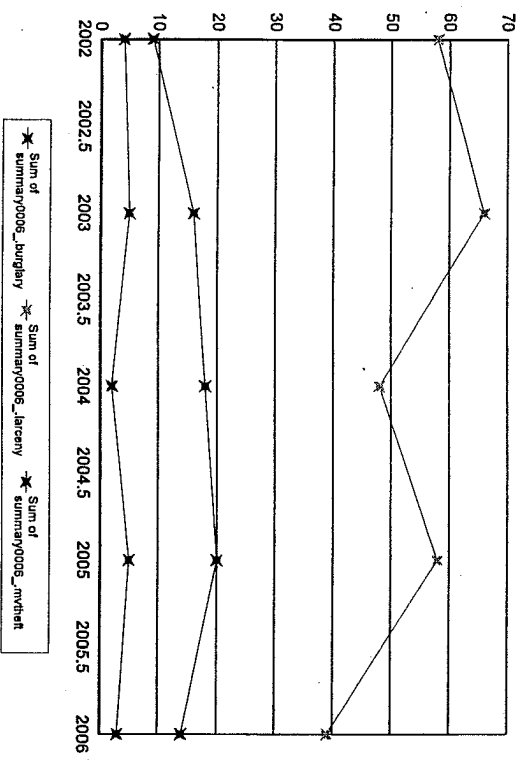
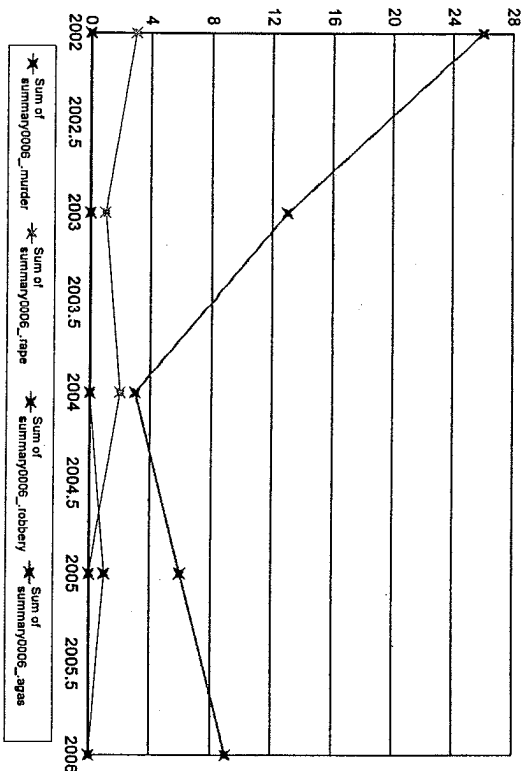
Months Reporting	Violent	Murder	Rape	Robbery Total	W/Gun %	Aggrav. Assault Total	W/Gun %	Property Burglary	Larceny	MV/Theft
2002	11	2	0	0	0.00	2	0.00	32	21	2
2003	12	5	0	0	0.00	5	0.00	43	24	5
2004	12	10	0	1	1100.00	8	0.00	49	18	6
2005	12	10	0	0	0.00	6	350.00	57	31	8
2006	12	13	0	0	0.00	12	18.33	57	16	6



Notes on data: "Months Reporting" indicate the number of months of data received from this agency; "Violent" is the sum of the number of Murder, Rape, Total Robbery and Total Aggravated Assaults; "Property" is the sum of Burglary, Larceny, and Motor Vehicle Theft. If "NIBRS Reporting Agency?" is "Y", then more detailed crime and incident data is available from this agency.

Stockbridge

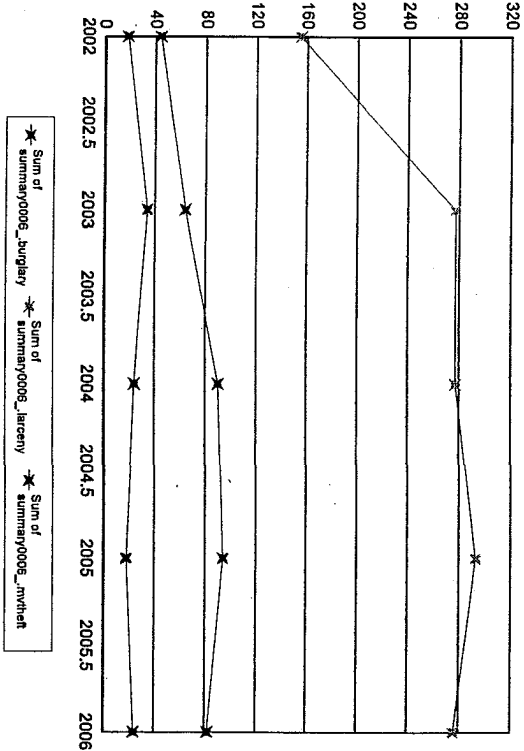
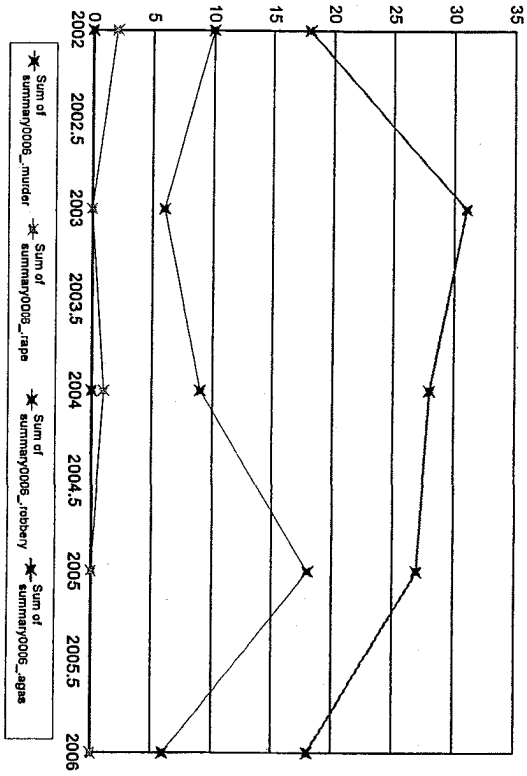
Months Reporting	Violent	Murder	Rape	Robbery		Aggrav. Assault	Property	Larceny	MV/Theft
				Total	W/Gun				
2002	29	0	3	0	0	26	71	58	4
2003	14	0	1	0	0	13	87	66	5
2004	5	0	2	0	0	3	68	48	2
2005	7	1	0	0	0	6	83	58	5
2006	9	0	0	0	0	9	56	39	3



Notes on data: "Months Reporting" indicate the number of months of data received from this agency; "Violent" is the sum of the number of Murder, Rape, Total Robbery and Total Aggravated Assaults; "Property" is the sum of Burglary, Larceny, and Motor Vehicle Theft. If "NIBRS Reporting Agency?" is "Y", then more detailed crime and incident data is available from this agency.

Stoneham

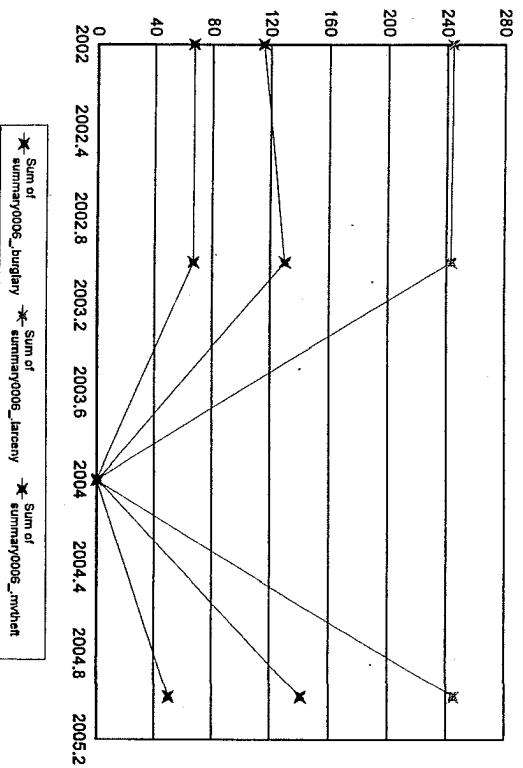
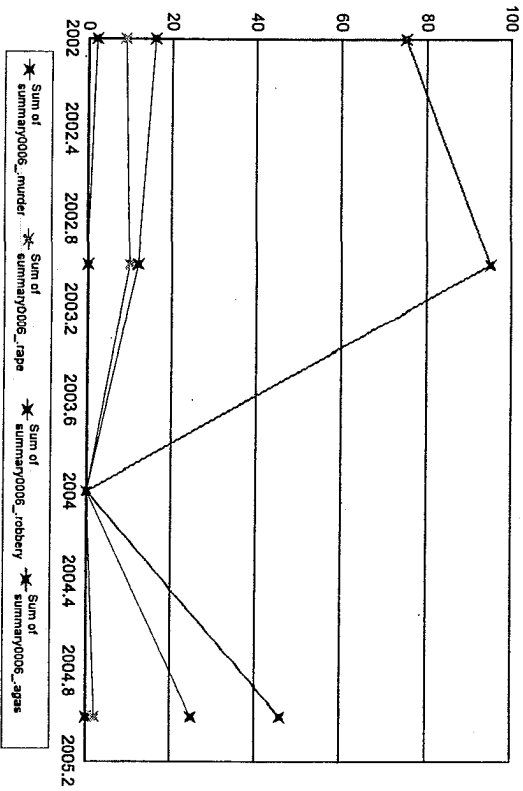
Months Reporting	Violent	Murder	Rape	Robbery Total	W/Gun	% Gun	Aggrav. Assault Total	W/Gun	% Gun	Property	Burglary	Larceny	MV/Theft
2002	7	30	0	10	4	40.00	18	1	5.56	217	44	155	18
2003	12	37	0	6	0	0.00	31	2	6.45	375	64	277	34
2004	12	38	0	9	1	11.11	28	1	3.57	391	90	277	24
2005	12	45	0	18	4	22.22	27	1	3.70	405	94	293	18
2006	12	24	0	6	0	0.00	18	2	11.11	382	82	276	24



Notes on data: "Months Reporting" indicate the number of months of data received from this agency; "Violent" is the sum of the number of Murder, Rape, Total Robbery and Total Aggravated Assaults; "Property" is the sum of Burglary, Larceny, and Motor Vehicle Theft. If "NIBRS Reporting Agency?" is "Y", then more detailed crime and incident data is available from this agency.

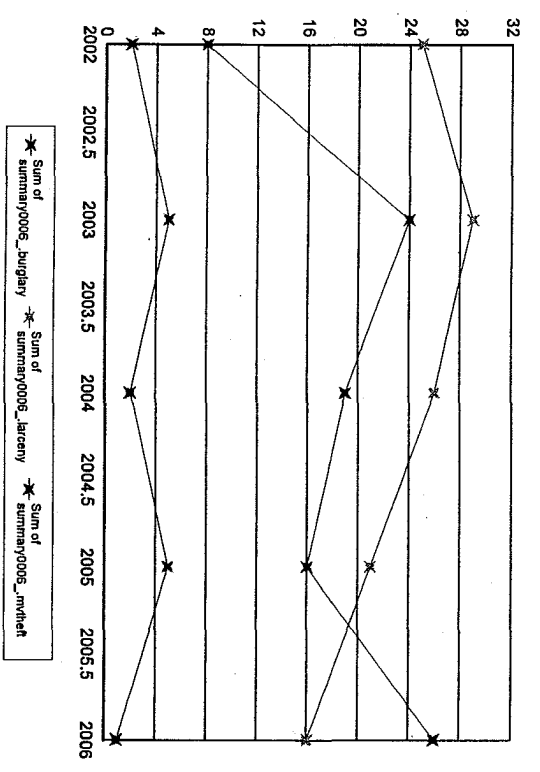
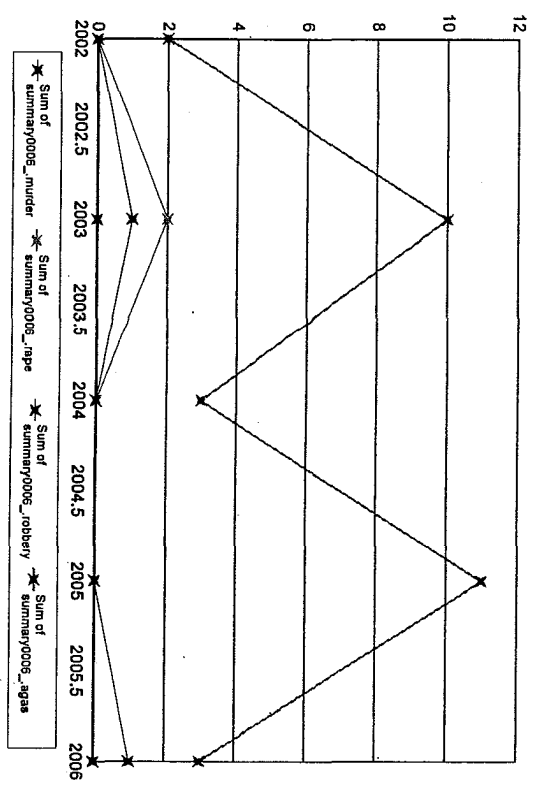
Stoughton

Months Reporting	Violent	Murder	Rape	Robbery		Aggrav. Assault		Property	Burglary	Larceny	MV Theft
				Total	W/Gun	Total	W/Gun				
2002	102	2	9	16	7	75	12	426	115	244	67
2003	117	0	10	12	8	95	17	440	130	243	67
2004	0	0	0	0	0	0	0	1	1	0	0
2005	73	0	2	25	11	46	8	436	141	245	50
					44.00	17.39					
					4.375	16.00					
					66.67	17.89					
					0.00	0.00					



Notes on data: "Months Reporting" indicate the number of months of data received from this agency. "Violent" is the sum of the number of Murder, Rape, Total Robbery and Total Aggravated Assaults; "Property" is the sum of Burglary, Larceny, and Motor Vehicle Theft. "If "NIBRS Reporting Agency?" is "Y", then more detailed crime and incident data is available from this agency.

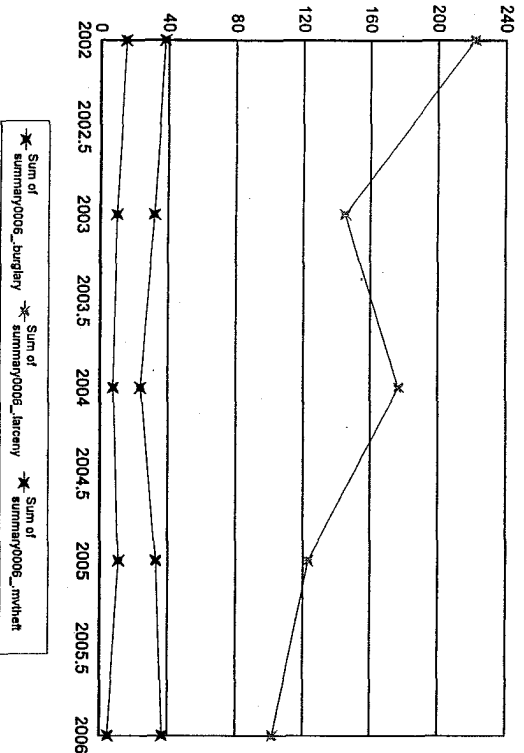
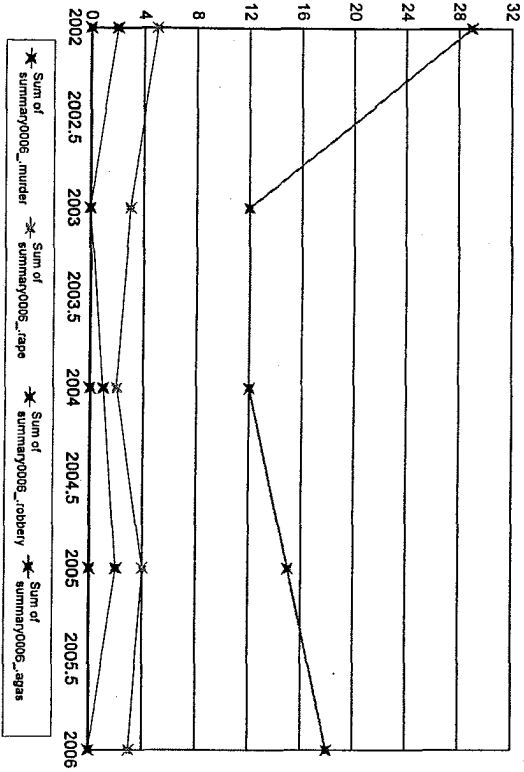
Months Reporting	Violent	Murder	Rape	Robbery		Aggrav. Assault		Property	Larceny	MV/Theft
				Total	% W/Gun	Total	% W/Gun			
2002	8	2	0	0	0.00	2	0.00	35	25	2
2003	12	13	1	0	0.00	10	10.00	58	24	5
2004	12	3	0	0	0.00	3	0.00	47	19	2
2005	12	11	0	0	0.00	11	18.18	42	16	5
2006	12	5	0	1	0.00	3	0.00	43	26	1



Notes on data: "Months Reporting" indicate the number of months of data received from this agency; "Violent" is the sum of the number of Murder, Rape, Total robbery and Total Aggravated Assaults; "Property" is the sum of Burglary, Larceny, and Motor Vehicle Theft. If "NIBRS Reporting Agency?" is "Y", then more detailed crime and incident data is available from this agency.

Sturbridge

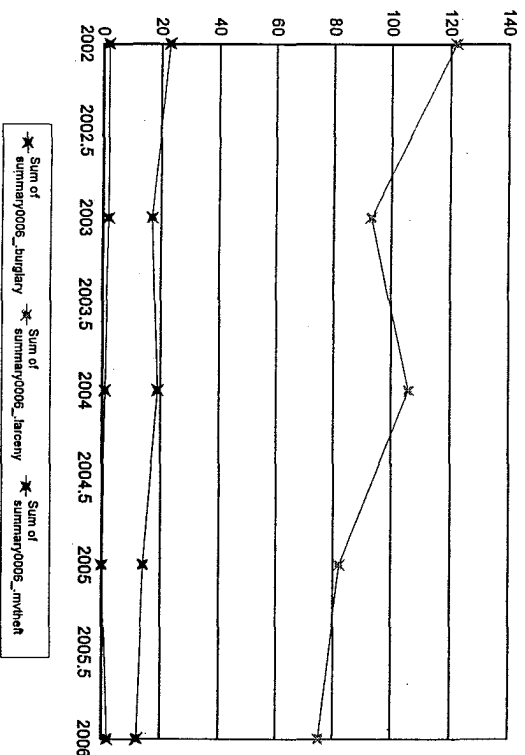
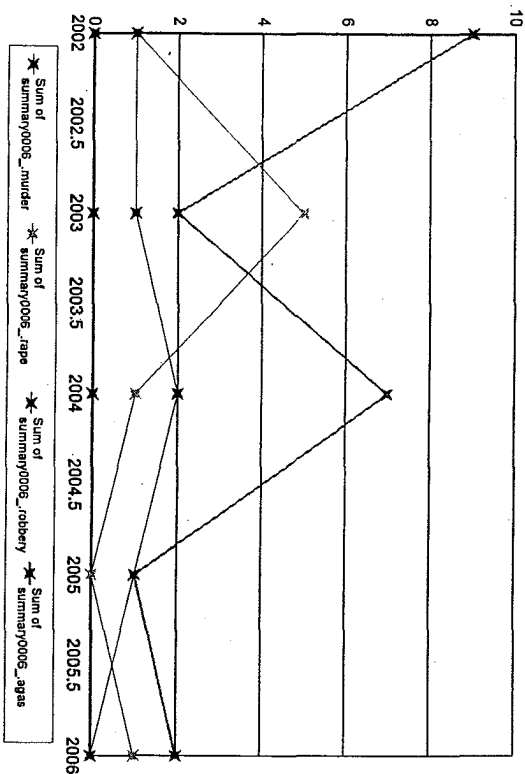
Months Reporting	Violent	Murder	Rape	Robbery	Total W/Gun	% Gun	Aggrav Assault	% Gun	Property	Burglary	Larceny	MVTheft	
2002	12	36	0	2	1	50.00	29	0	0.00	275	38	222	15
2003	12	15	0	0	0	0.00	12	0	0.00	187	32	145	10
2004	12	15	0	1	0	0.00	12	0	0.00	209	24	177	8
2005	12	21	0	2	2	100.00	15	0	0.00	167	33	123	11
2006	12	21	0	0	0	0.00	18	5	27.78	144	37	102	5



Notes on data: "Months Reporting" indicate the number of months of data received from this agency. "Violent" is the sum of the number of Murder, Rape, Total Robbery and Total Aggravated Assaults; "Property" is the sum of Burglary, Larceny, and Motor Vehicle Theft. If "NIBRS Reporting Agency?" is "Y", then more detailed crime and incident data is available from this agency.

Sudbury

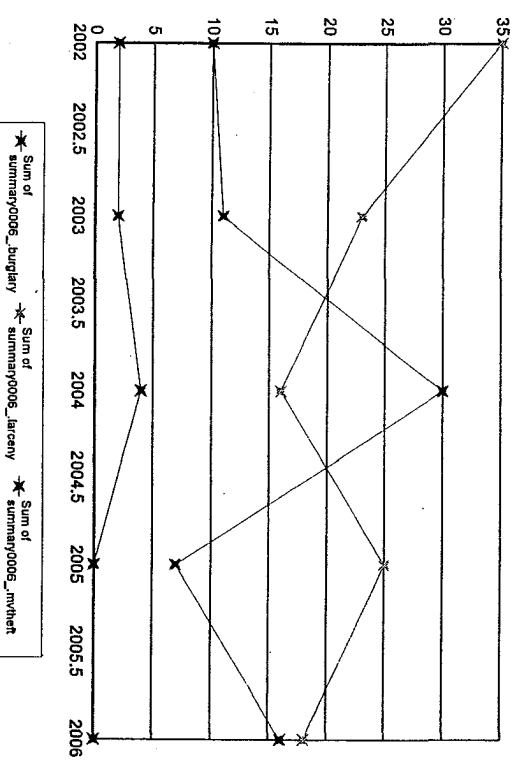
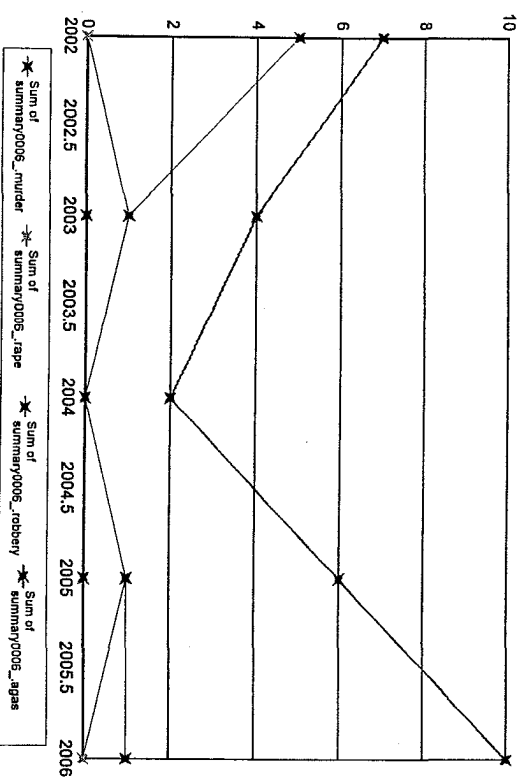
Months Reporting	Violent	Murder	Rape	Robbery	Total W/Gun	% Gun	Aggrav. Assault	Total W/Gun	% Gun	Property	Burglary	Larceny	MV Theft
2002	12	11	0	1	1	0	0.00	9	0	147	23	122	2
2003	12	8	0	5	1	1100.00		2	0	112	17	93	2
2004	12	10	0	1	2	0	0.00	7	0	126	19	106	1
2005	12	2	0	0	1	1100.00		1	0	96	14	82	0
2006	12	3	0	1	0	0	0.00	2	0	89	12	75	2



Notes on data: "Months Reporting" indicate the number of months of data received from this agency. "Violent" is the sum of the number of Murder, Rape, Total Robbery and Total Aggravated Assaults; "Property" is the sum of Burglary, Larceny, and Motor Vehicle Theft. If "NIBRS Reporting Agency?" is "Y", then more detailed crime and incident data is available from this agency.

Sunderland

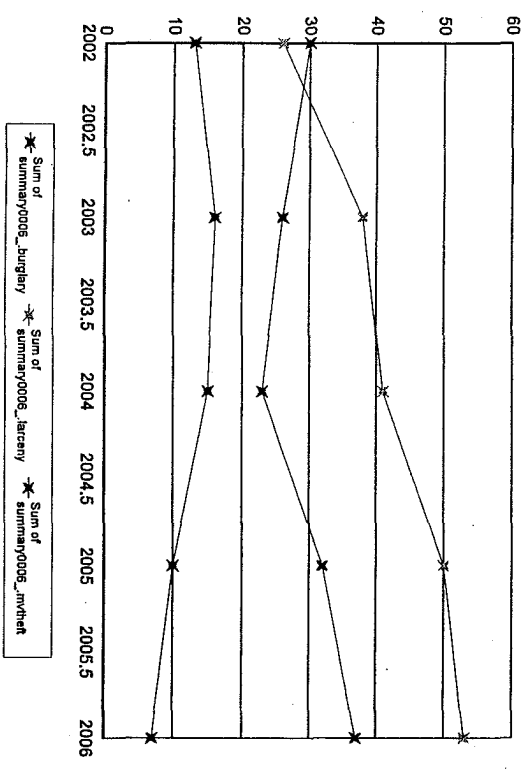
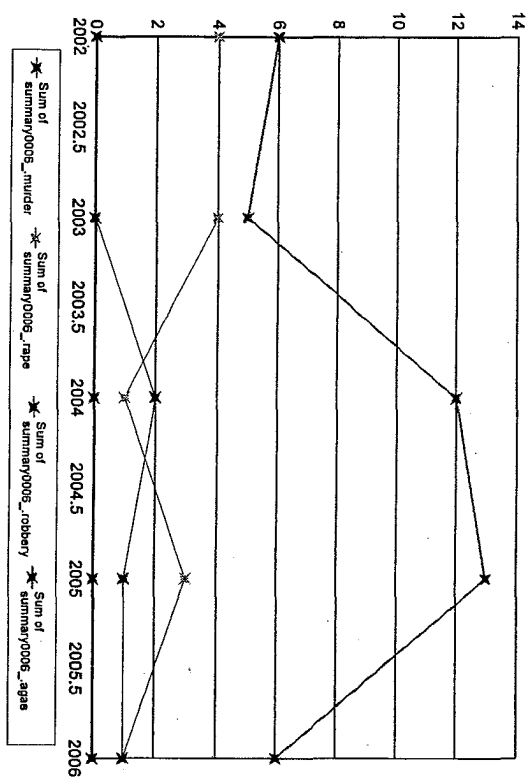
Months Reporting	Violent	Murder	Rape	Robbery Total	W/Gun %	Aggrav. Assault Total	W/Gun %	Property	Burglary	Larceny	MVTheft
2002	12	0	0	5	5100.00	7	0 0.00	47	10	35	2
2003	12	0	1	1	0 0.00	4	0 0.00	36	11	23	2
2004	12	0	0	0	0 0.00	2	0 0.00	50	30	16	4
2005	10	0	1	1	0 0.00	6	2 33.33	32	7	25	0
2006	12	11	0	1	1100.00	10	0 0.00	34	16	18	0



Notes on data: "Months Reporting" indicate the number of months of data received from this agency. "Violent" is the sum of the number of Murder, Rape, Total Robbery and Total Aggravated Assaults. "Property" is the sum of Burglary, Larceny, and Motor Vehicle Theft. If "NIBRS Reporting Agency?" is "Y", then more detailed crime and incident data is available from this agency.

Sutton

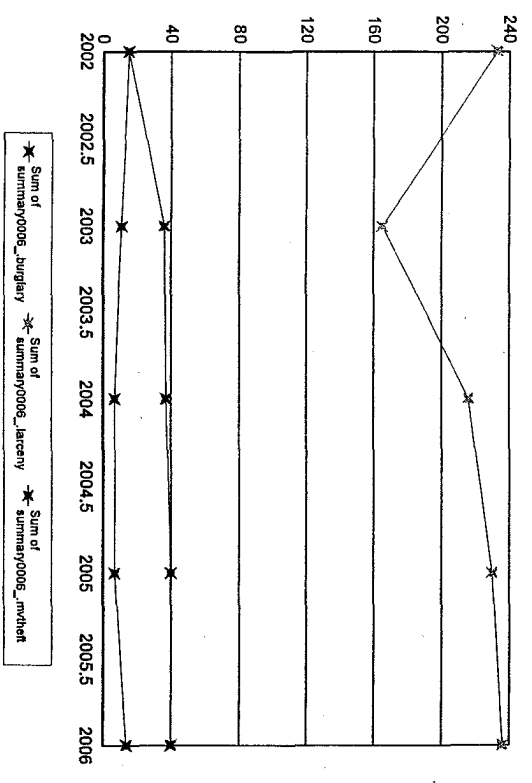
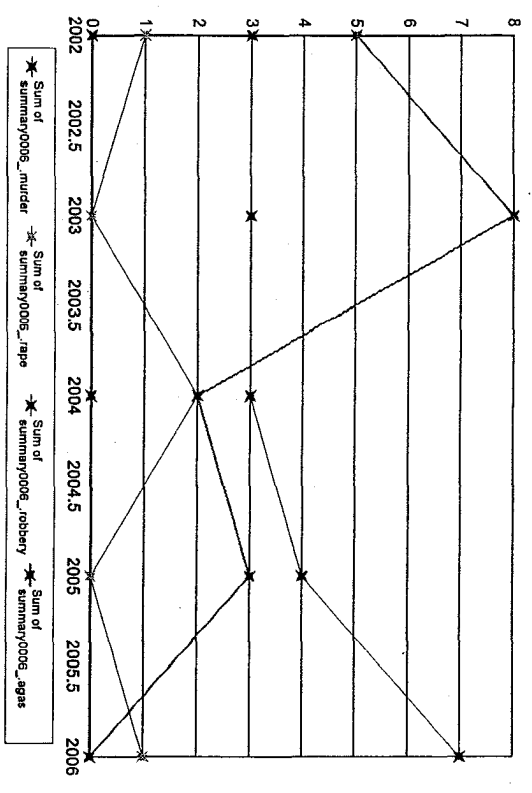
Months Reporting	Violent	Murder	Rape	Robbery Total W/Gun	% Gun	Aggrav. Assault Total W/Gun	% Gun	Property Burglary	Larceny	MVTheft
2002	12	10	0	0	0.00	6	0.00	69	30	13
2003	12	9	0	0	0.00	5	0.00	80	26	16
2004	12	15	0	2	0.00	12	0.00	79	23	15
2005	12	17	0	1	0.00	13	0.00	92	32	10
2006	12	8	0	1	0.00	6	0.00	97	37	7



Notes on data: "Months Reporting" indicate the number of months of data received from this agency. "Violent" is the sum of the number of Murder, Rape, Total Robbery and Total Aggravated Assaults; "Property" is the sum of Burglary, Larceny, and Motor Vehicle Theft. If "NIBRS Reporting Agency?" is "Y", then more detailed crime and incident data is available from this agency.

Swampscott

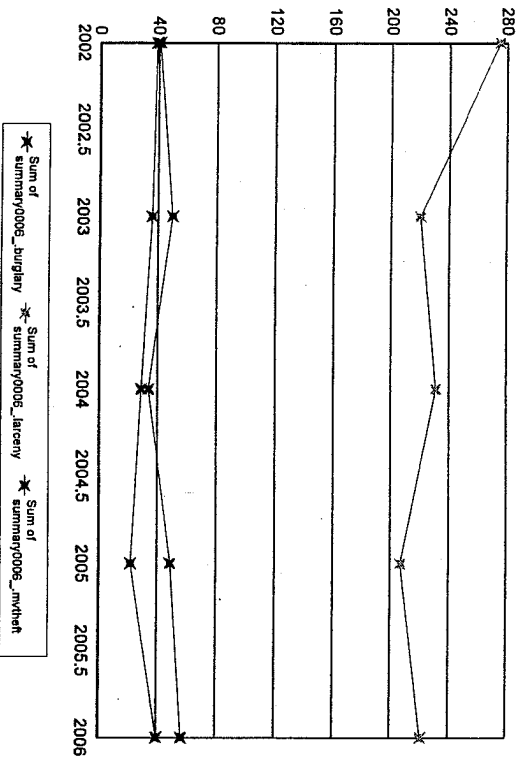
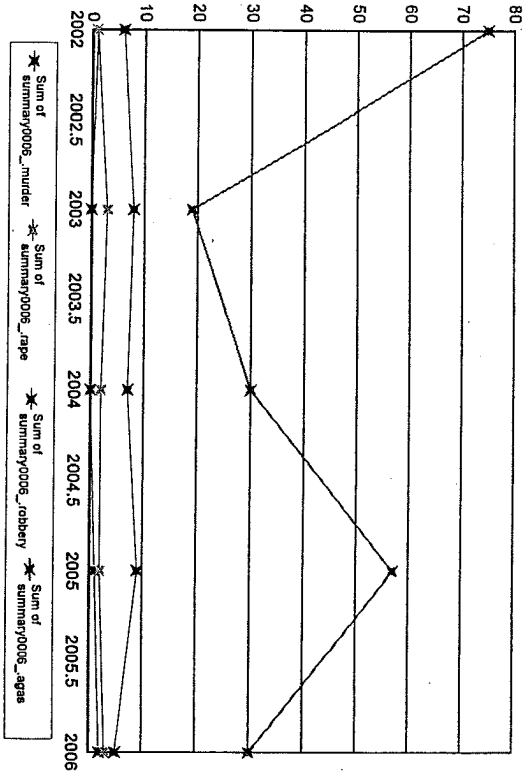
Months Reporting	Violent	Murder	Rape	Robbery	Total W/Gun	% Gun	Aggrav Assault	% Gun	Property	Burglary	Larceny	MVTheft
2002	12	9	0	3	0	0.00	5	0.00	263	15	233	15
2003	12	11	0	3	1	33.33	8	0.00	212	36	165	11
2004	12	7	0	3	1	33.33	2	0.00	260	37	216	7
2005	12	7	0	4	1	25.00	3	0.00	277	40	230	7
2006	12	9	1	7	2	28.57	0	0.00	290	40	236	14



Notes on data: "Months Reporting" indicate the number of months of data received from this agency; "Violent" is the sum of the number of Murder, Rape, Total Robbery and Total Aggravated Assaults; "Property" is the sum of Burglary, Larceny, and Motor Vehicle Theft. " If "NIBRS Reporting Agency?" is "Y", then more detailed crime and incident data is available from this agency.

Swansea

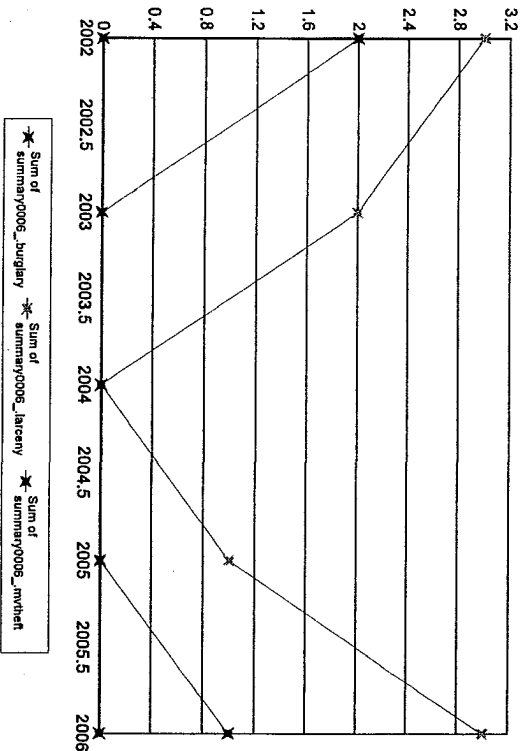
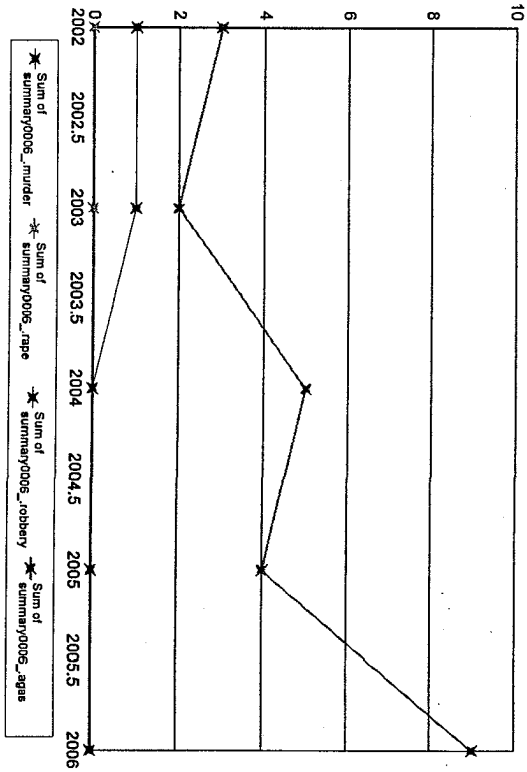
Year	Months Reporting	Violent	Murder	Rape	Robbery		Aggrav. Assault		Property Burglary	Larceny	MVTTheft			
					Total	% W/Gun	Total	% W/Gun						
2002	12	83	1	1	6	2	33.33	75	3	4.00	355	41	275	39
2003	12	30	0	3	8	2	25.00	19	2	10.53	306	50	220	36
2004	12	39	0	2	7	0	0.00	30	0	0.00	294	34	231	29
2005	12	69	1	2	9	4	44.44	57	1	1.75	278	49	207	22
2006	12	40	2	3	5	0	0.00	30	1	3.33	318	57	221	40



Notes on data: "Months Reporting" indicate the number of months of data received from this agency; "Violent" is the sum of the number of Murder, Rape, Total obbery and Total Aggravated Assaults; "Property" is the sum of Burglary, Larceny, and Motor Vehicle Theft. If "NIBRS Reporting Agency?" is "Y", then more detailed crime and incident data is available from this agency.

SP Barnstable-Middleboro

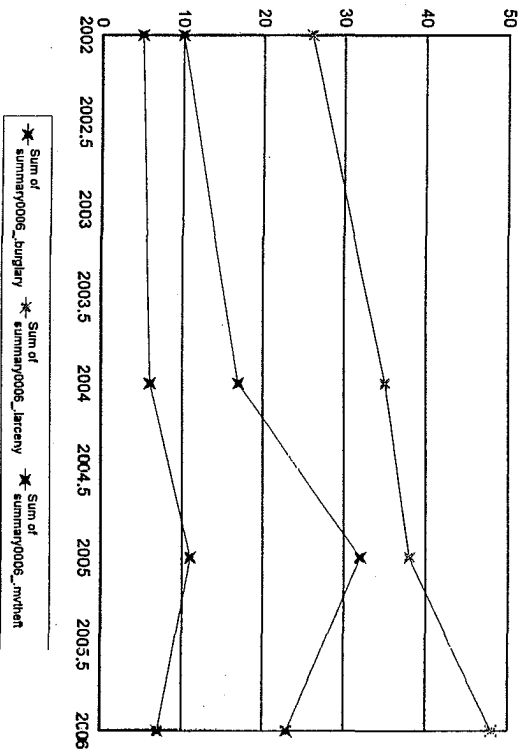
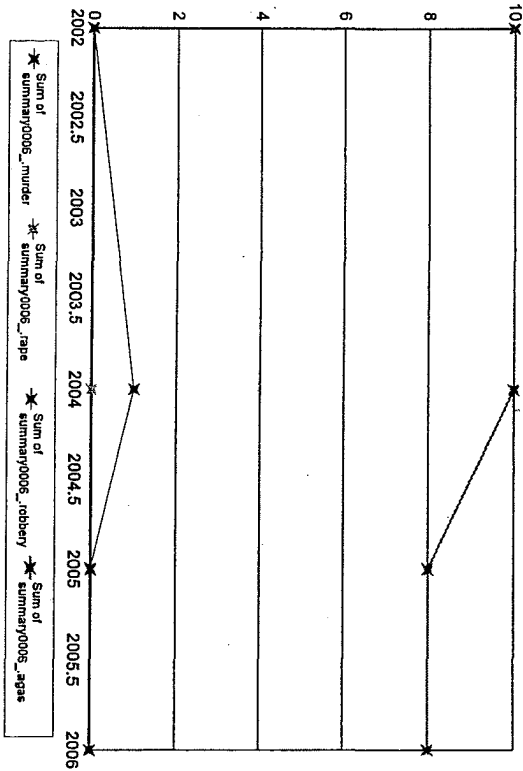
Months Reporting	Violent	Murder	Rape	Robbery		Aggrav. Assault	Gun %	Property	Burglary	Larceny	MVTtheft
				Total	W/Gun						
2002	12	4	0	1	0	0.00		5	0	3	2
2003	12	3	0	1	0	0.00		2	1	50.00	0
2004	12	5	0	0	0	0.00		0	0	0	0
2005	12	4	0	0	0	0.00		1	0	1	0
2006	12	9	0	0	0	0.00		4	0	3	1



Notes on data: "Months Reporting" indicate the number of months of data received from this agency; "Violent" is the sum of the number of Murder, Rape, Total Robbery and Total Aggravated Assaults; "Property" is the sum of Burglary, Larceny, and Motor Vehicle Theft. " If "NIBRS Reporting Agency?" is "Y", then more detailed crime and incident data is available from this agency.

SP Berkshire-Northampton

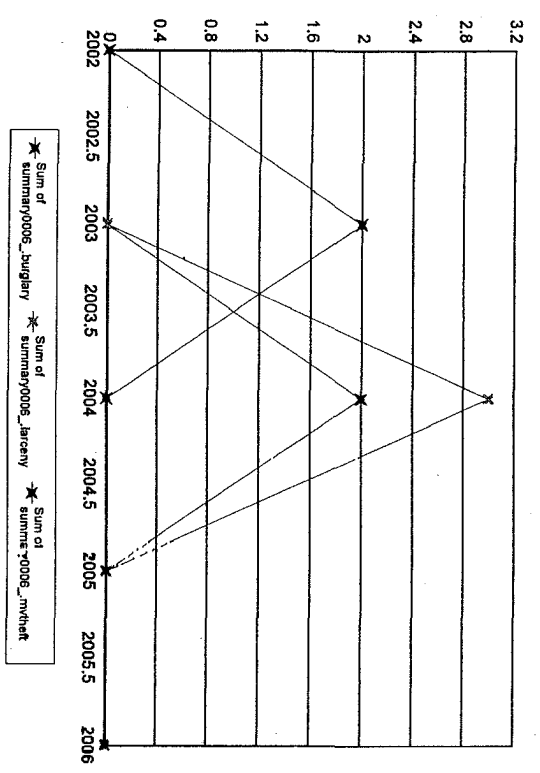
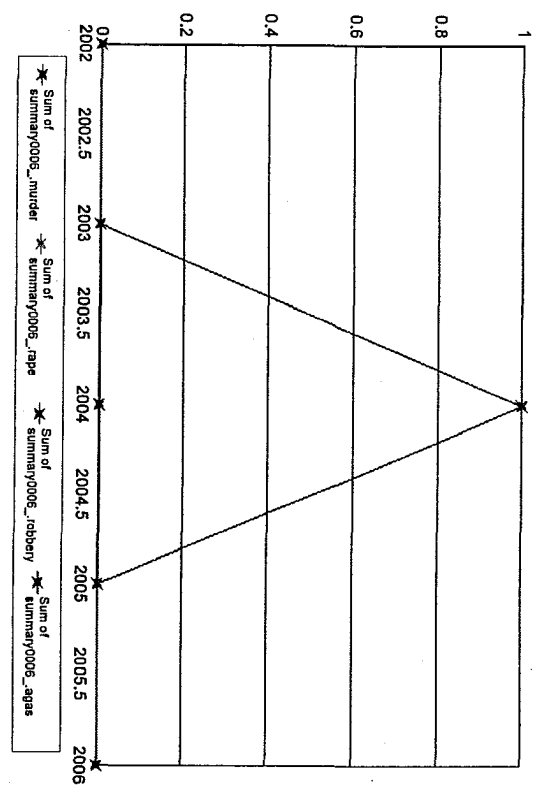
Months Reporting	Violent	Murder	Rape	Robbery		Aggrav. Assault	Property	Larceny	M/Thft
				Total	W/Gun				
2002	11	0	0	0	0	10	41	26	5
2004	12	11	0	1	1100.00	10	58	35	6
2005	12	8	0	0	0.00	8	81	38	11
2006	12	8	0	0	0.00	8	78	48	7



Notes on data: "Months Reporting" indicate the number of months of data received from this agency; "Violent" is the sum of the number of Murder, Rape, Total Robbery and Total Aggravated Assaults; "Property" is the sum of Burglary, Larceny, and Motor Vehicle Theft. If "NIBRS Reporting Agency?" is "Y", then more detailed crime and incident data is available from this agency.

SP Berkshire-Weston

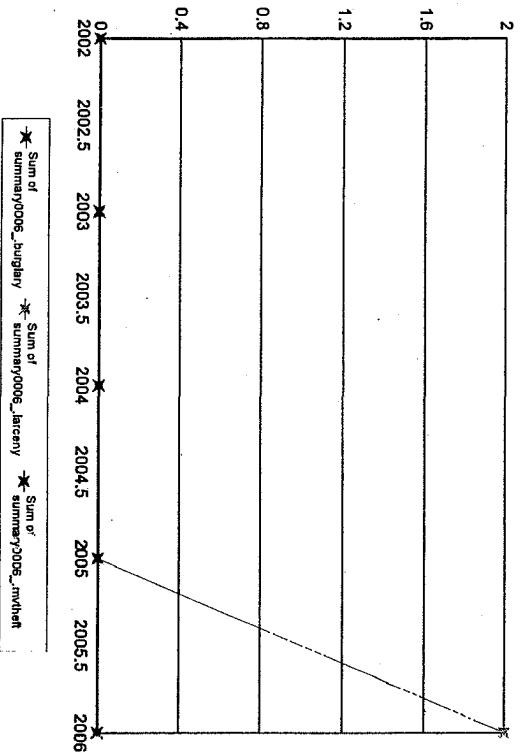
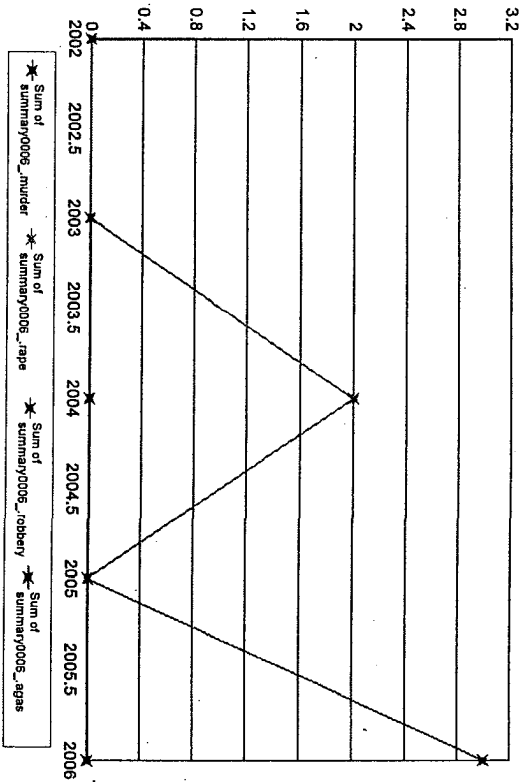
Months Reporting	Violent	Murder	Rape	Robbery	Total W/Gun	% Gun	Aggrav. Assault	% Gun	Property Burglary	Larceny	MV Theft
2002	11	0	0	0	0	0.00	0	0.00	0	0	0
2003	12	0	0	0	0	0.00	0	0.00	2	0	2
2004	12	1	0	0	0	0.00	1	0.00	5	2	0
2005	12	0	0	0	0	0.00	0	0.00	0	0	0
2006	12	0	0	0	0	0.00	0	0.00	0	0	0



Notes on data: "Months Reporting" indicate the number of months of data received from this agency; "Violent" is the sum of the number of Murder, Rape, Total Robbery and Total Aggravated Assaults; "Property" is the sum of Burglary, Larceny, and Motor Vehicle Theft. If "NIBRS Reporting Agency?" is "Y", then more detailed crime and incident data is available from this agency.

SP Bristol-Framingham

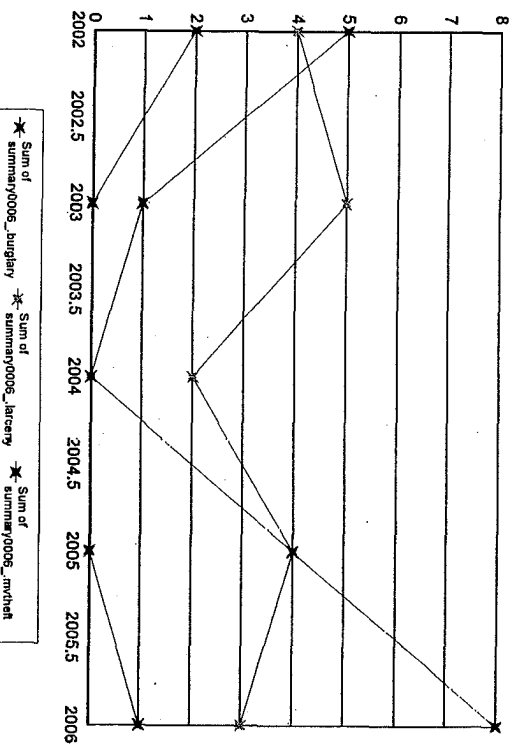
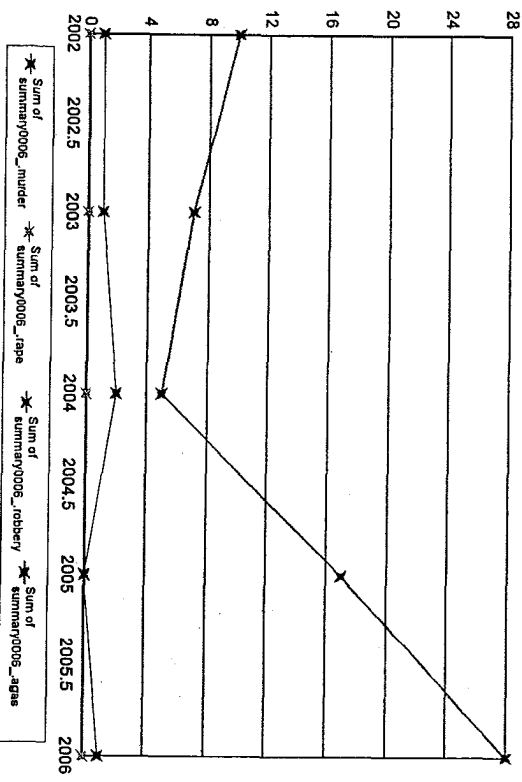
Months Reporting	Violent	Murder	Rape	Robbery Total	W/Gun %	Aggrav. Assault Total	W/Gun %	Property	Burglary	Larceny	MVTheft
2002	12	0	0	0	0.00	0	0.00	0	0	0	0
2003	12	0	0	0	0.00	0	0.00	0	0	0	0
2004	12	2	0	0	0.00	2	0.00	0	0	0	0
2005	4	0	0	0	0.00	0	0.00	0	0	0	0
2006	12	3	0	0	0.00	3	0.00	2	0	2	0



Notes on data: "Months Reporting" indicate the number of months of data received from this agency; "Violent" is the sum of the number of Murder, Rape, Total Robbery and Total Aggravated Assaults; "Property" is the sum of Burglary, Larceny, and Motor Vehicle Theft. If "NIBRS Reporting Agency?" is "Y", then more detailed crime and incident data is available from this agency.

SP Bristol-Middleboro

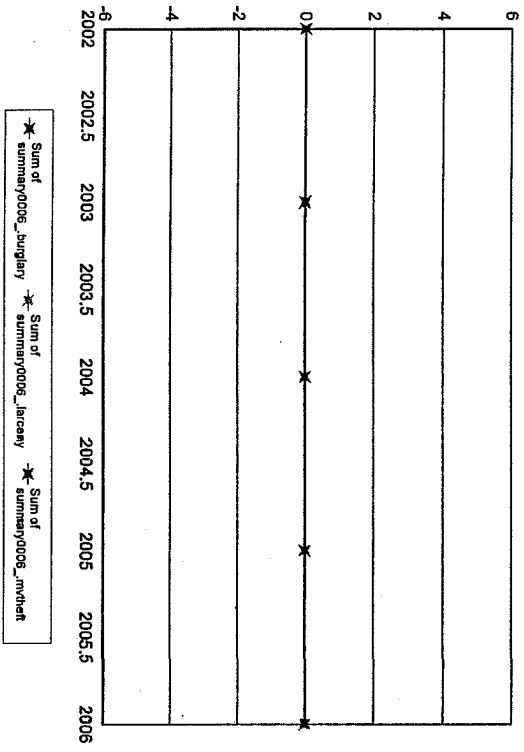
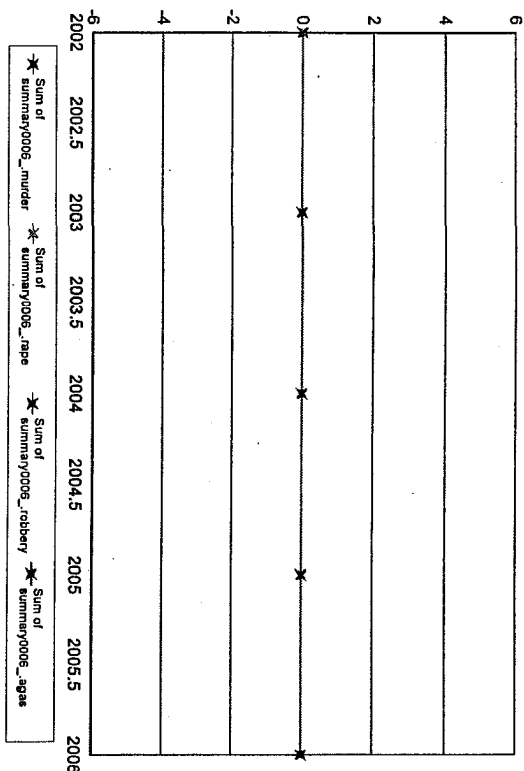
Months Reporting	Violent	Murder	Rape	Robbery	Total W/Gun	% Gun	Aggrav. Assault	Total W/Gun	% Gun	Property Burglary	Larceny	MV Theft
2002	11	0	0	1	0	0.00	10	0	0.00	11	2	4
2003	8	0	0	1	0	0.00	7	0	0.00	6	0	5
2004	7	0	0	2	1	50.00	5	0	0.00	2	0	2
2005	17	0	0	0	0	0.00	17	3	17.65	8	0	4
2006	29	0	0	1	1	1100.00	28	1	3.57	12	1	3



Notes on data: "Months Reporting" indicate the number of months of data received from this agency; "Violent" is the sum of the number of Murder, Rape, Total Robbery and Total Aggravated Assaults; "Property" is the sum of Burglary, Larceny, and Motor Vehicle Theft. If "NIBRS Reporting Agency?" is "Y", then more detailed crime and incident data is available from this agency.

SP Dukas-Middleboro

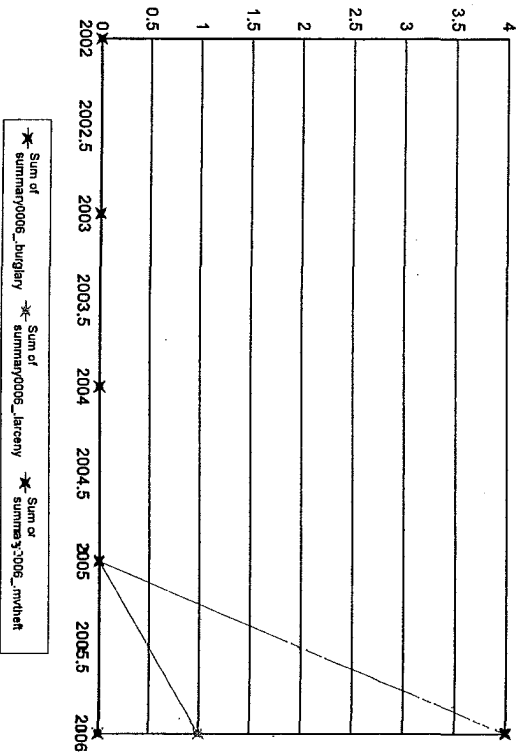
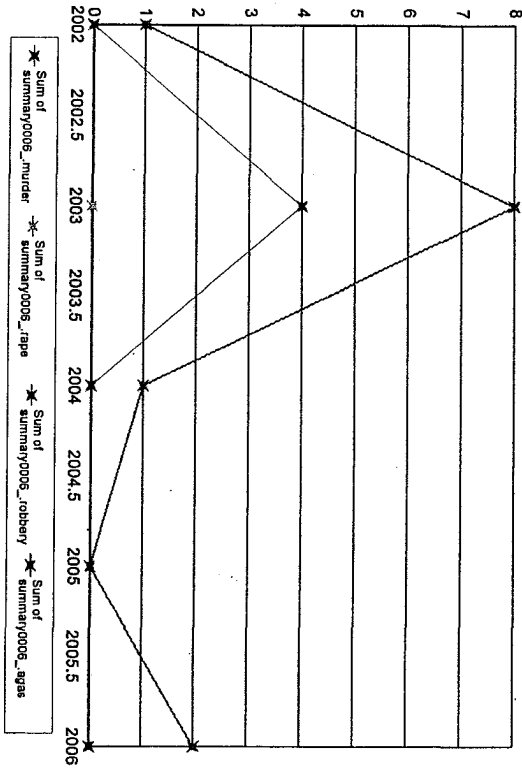
Months Reporting	Violent	Murder	Rape	Robbery		Aggrav. Assault		Property Burglary	Larceny	M/V Theft
				Total	W/Gun	Total	W/Gun			
2002	12	0	0	0	0	0	0	0	0	0
2003	12	0	0	0	0	0	0	0	0	0
2004	12	0	0	0	0	0	0	0	0	0
2005	12	0	0	0	0	0	0	0	0	0
2006	12	0	0	0	0	0	0	0	0	0



Notes on data: "Months Reporting" indicate the number of months of data received from this agency; "Violent" is the sum of the number of Murder, Rape, Total Robbery and Total Aggravated Assaults; "Property" is the sum of Burglary, Larceny, and Motor Vehicle Theft. If "NIBRS Reporting Agency?" is "Y", then more detailed crime and incident data is available from this agency.

SP Essex-Frammingham

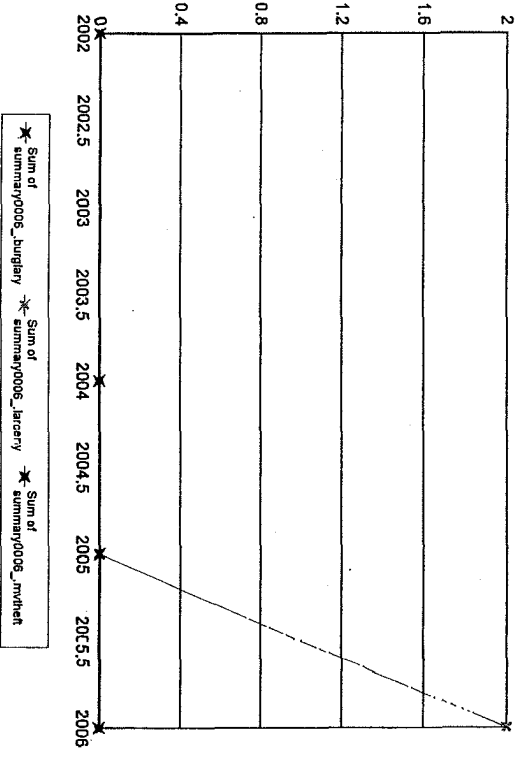
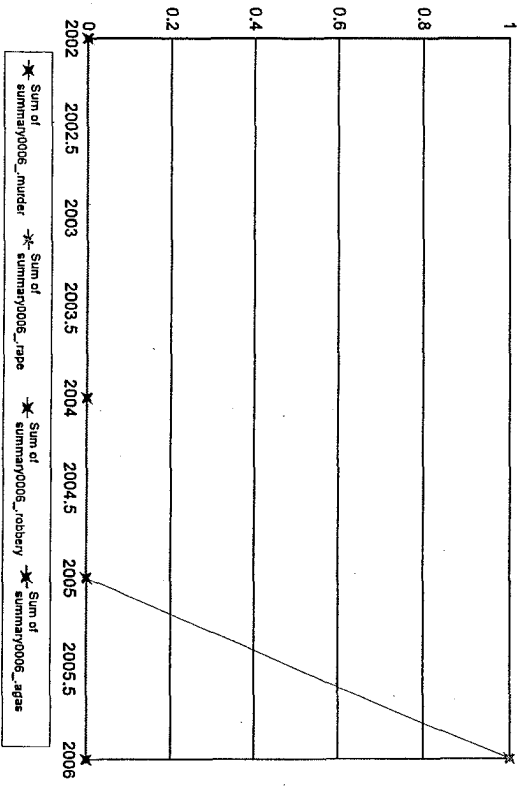
Months Reporting	Violent	Murder	Rape	Robbery Total	W/Gun %	Aggrav. Assault Total	W/Gun %	Property Burglary	Larceny	MV/Theft
2002	12	1	0	0	0.00	1	0.00	0	0	0
2003	12	12	0	4	0.00	8	0.00	0	0	0
2004	12	1	0	0	0.00	1	0.00	0	0	0
2005	12	0	0	0	0.00	0	0.00	0	0	0
2006	12	2	0	0	0.00	2	0.00	5	1	4



Notes on data: "Months Reporting" indicate the number of months of data received from this agency; "Violent" is the sum of the number of Murder, Rape, Total Robbery and Total Aggravated Assaults; "Property" is the sum of Burglary, Larceny, and Motor Vehicle Theft; "If "NIBRS Reporting Agency?" is "Y", then more detailed crime and incident data is available from this agency.

SP Franklin-Holden

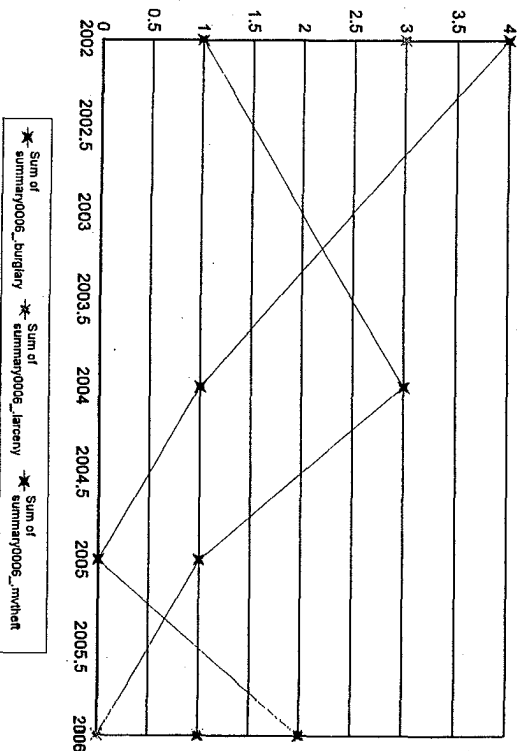
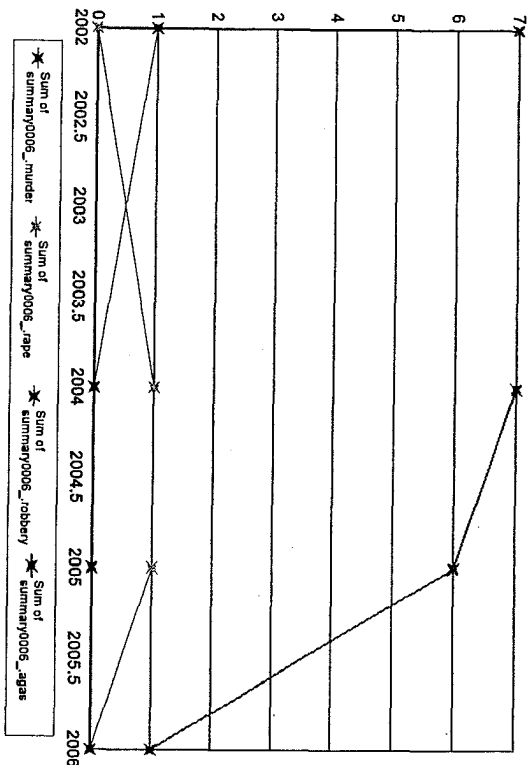
Months Reporting	Violent	Murder	Rape	Robbery		Aggrav. Assault		Property	Larceny	MVTheft
				Total	% W/Gun	Total	% W/Gun			
2002	0	0	0	0	0.00	0	0.00	0	0	0
2004	0	0	0	0	0.00	0	0.00	0	0	0
2005	0	0	0	0	0.00	0	0.00	0	0	0
2006	1	0	1	0	0.00	0	0.00	2	0	0



Notes on data: "Months Reporting" indicate the number of months of data received from this agency; "Violent" is the sum of the number of Murder, Rape, Total Robbery and Total Aggravated Assaults; "Property" is the sum of Burglary, Larceny, and Motor Vehicle Theft. If "NIBRS Reporting Agency?" is "Y", then more detailed crime and incident data is available from this agency.

SP Franklin-Northampton

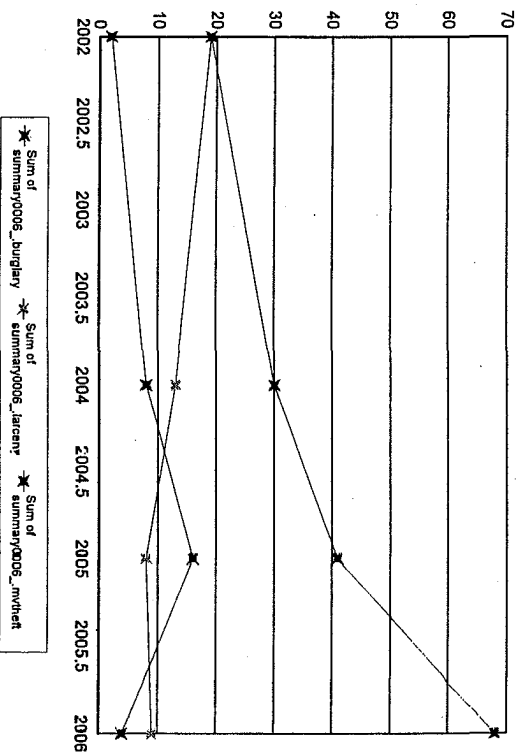
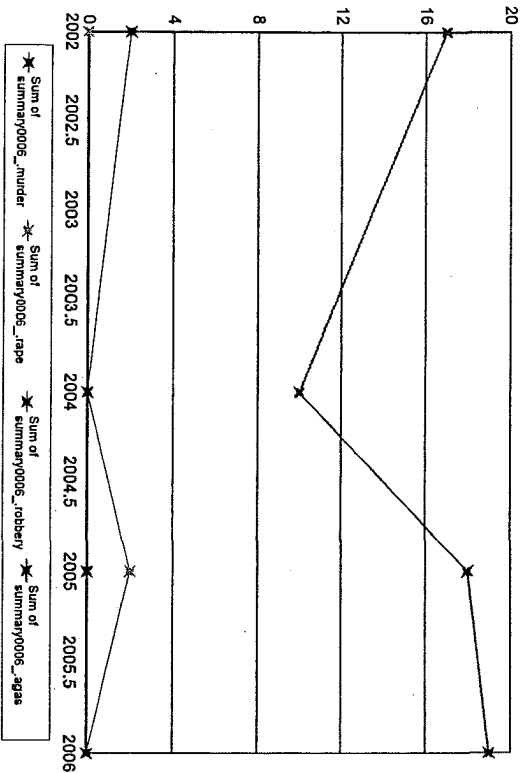
Months Reporting	Violent	Murder	Rape	Robbery	Total W/Gun	% Gun	Aggrav. Assault	Total W/Gun	% Gun	Property Burglary	Larceny	MV/Theft
2002	11	8	0	1	1100.00	0.00	7	0	0.00	8	4	3
2004	12	8	0	0	0	0.00	7	0	0.00	7	1	3
2005	12	7	0	0	0	0.00	6	0	0.00	2	0	1
2006	12	1	0	0	0	0.00	1	0	0.00	3	2	0



Notes on data: "Months Reporting" indicate the number of months of data received from this agency; "Violent" is the sum of the number of Murder, Rape, Total Robbery and Total Aggravated Assaults; "Property" is the sum of Burglary, Larceny, and Motor Vehicle Theft." If "NIBRS Reporting Agency?" is "Y", then more detailed crime and incident data is available from this agency.

SP Hampden-Northampton

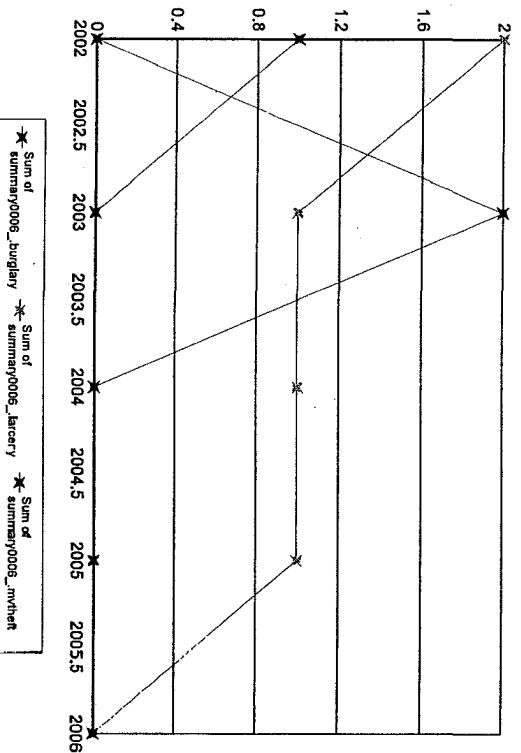
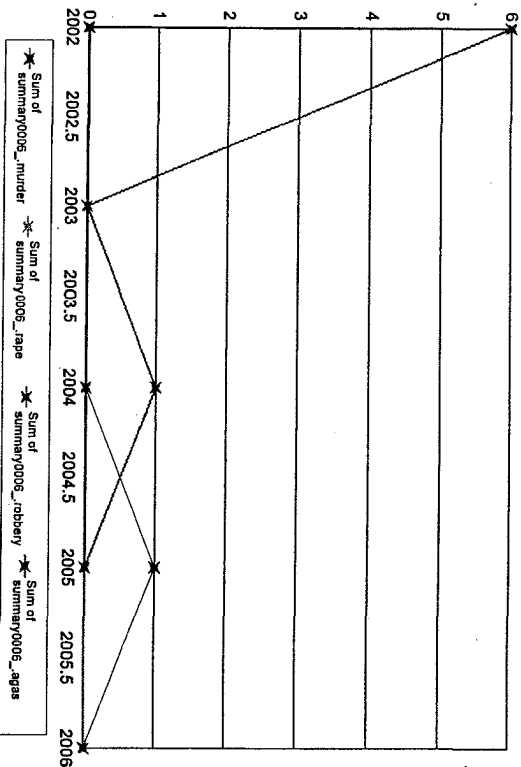
Months Reporting	Violent	Murder	Rape	Robbery		Aggrav. Assault	Gun		Property Burglary	Larceny	MVTheft	
				Total	W/Gun		Total	W/Gun				
2002	11	19	0	2	2100.00	17	0	0.00	40	2	19	
2004	12	10	0	0	0.00	10	0	0.00	51	8	13	
2005	12	20	0	0	0.00	18	1	5.56	65	16	8	
2006	12	19	0	0	0.00	19	1	5.26	81	4	9	
												68



Notes on data: "Months Reporting" indicate the number of months of data received from this agency; "Violent" is the sum of the number of Murder, Rape, Total Obbery and Total Aggravated Assaults; "Property" is the sum of Burglary, Larceny, and Motor Vehicle Theft. If "NIBRS Reporting Agency?" is "Y", then more detailed crime and incident data is available from this agency.

SP Hampden-Weston

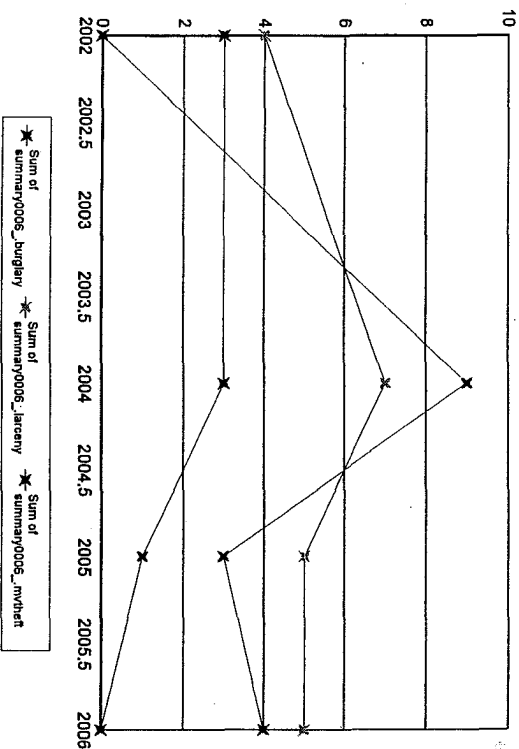
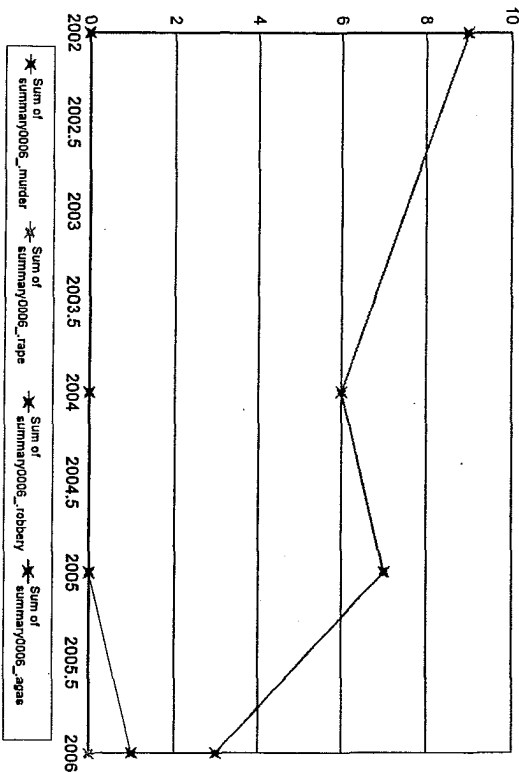
Months Reporting	Violent	Murder	Rape	Robbery Total	W/Gun %	Aggrav. Assault Total	W/Gun %	Property Burglary	Larceny	M/Theft
2002	6	0	0	0	0.00	6	0.00	3	2	0
2003	0	0	0	0	0.00	0	0.00	3	1	2
2004	1	0	0	0	0.00	1	0.00	1	1	0
2005	1	0	0	1	0.00	0	0.00	1	1	0
2006	0	0	0	0	0.00	0	0.00	0	0	0



Notes on data: "Months Reporting" indicate the number of months of data received from this agency; "Violent" is the sum of the number of Murder, Rape, Total Robbery and Total Aggravated Assaults; "Property" is the sum of Burglary, Larceny, and Motor Vehicle Theft." If "NIBRS Reporting Agency?" is "Y", then more detailed crime and incident data is available from this agency.

SP Hampshire-Northampton

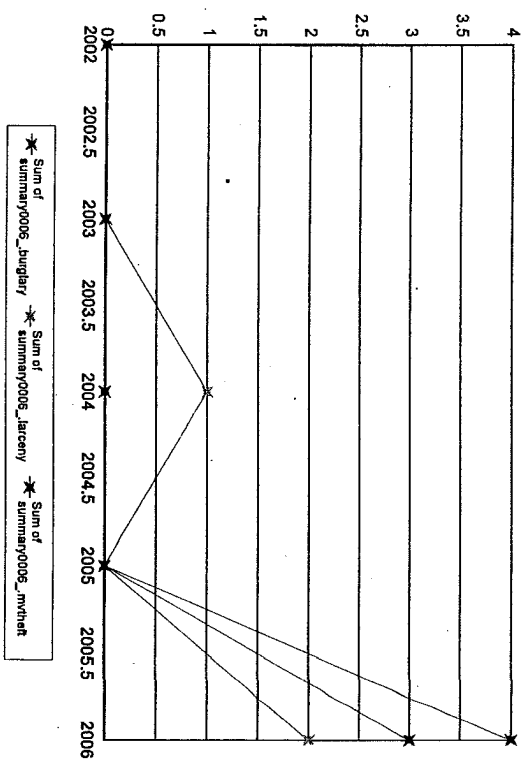
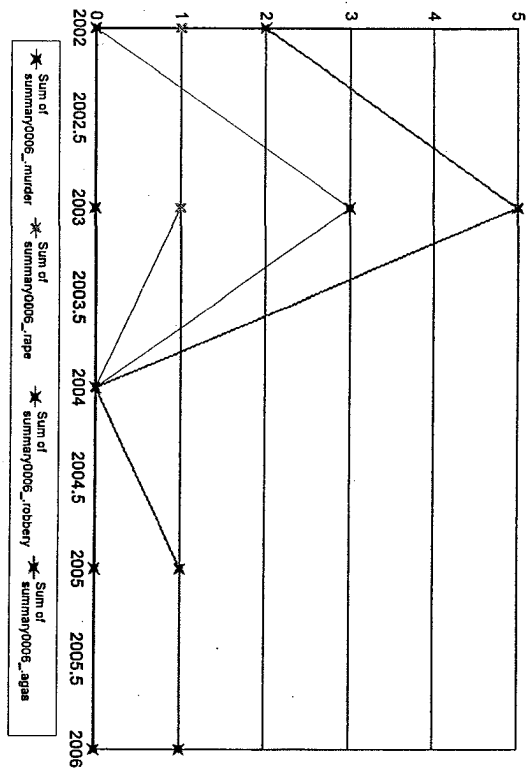
Months Reporting	Violent	Murder	Rape	Robbery		Aggrav. Assault	Gun		Property	Burglary	Larceny	MVTheft
				Total	W/Gun		Total	W/Gun				
2002	11	9	0	0	0	0.00	0	0.00	7	0	4	3
2004	12	6	0	0	0	0.00	6	0.00	19	9	7	3
2005	12	7	0	0	0	0.00	7	0.00	9	3	5	1
2006	12	4	0	1	1100.00	0.00	3	0.00	9	4	5	0



Notes on data: "Months Reporting" indicate the number of months of data received from this agency. "Violent" is the sum of the number of Murder, Rape, Total Robbery and Total Aggravated Assaults; "Property" is the sum of Burglary, Larceny, and Motor Vehicle Theft. If "NIBRS Reporting Agency?" is "Y", then more detailed crime and incident data is available from this agency.

SP Middlesex-Frammingham

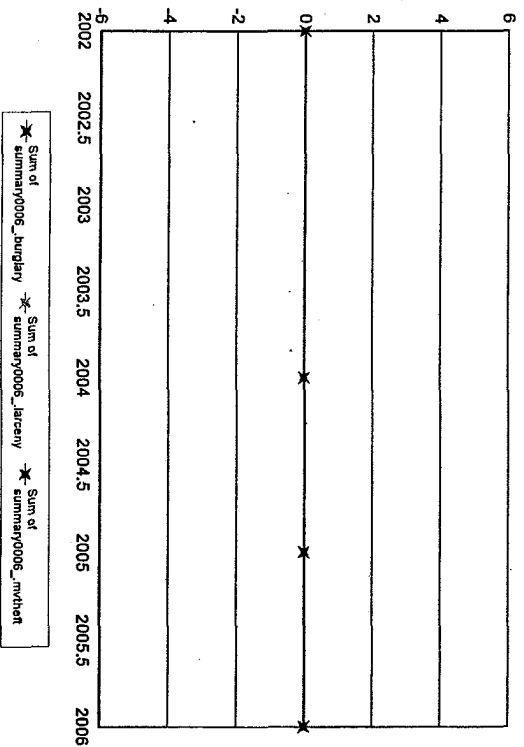
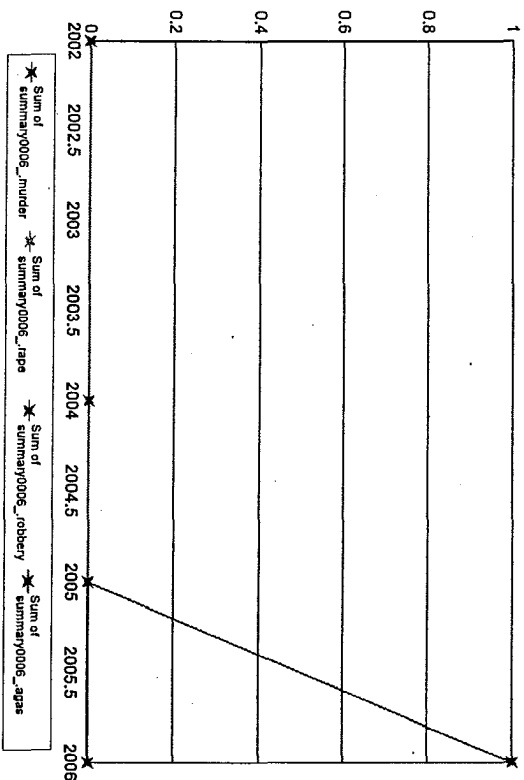
Months Reporting	Violent	Murder	Rape	Robbery Total W/Gun	% Gun	Aggrav. Assault Total W/Gun	% Gun	Property	Burglary	Larceny	MVTheft
2002	12	3	0	0	0.00	2	0.00	0	0	0	0
2003	12	9	0	3	0.00	5	0.00	0	0	0	0
2004	12	0	0	0	0.00	0	0.00	2	1	1	0
2005	11	1	0	0	0.00	1	0.00	0	0	0	0
2006	12	1	0	0	0.00	1	0.00	9	4	2	3



Notes on data: "Months Reporting" indicate the number of months of data received from this agency. "Violent" is the sum of the number of Murder, Rape, Total Robbery and Total Aggravated Assaults; "Property" is the sum of Burglary, Larceny, and Motor Vehicle Theft. If "NIBRS Reporting Agency?" is "Y", then more detailed crime and incident data is available from this agency.

SP Middlesex-Holder

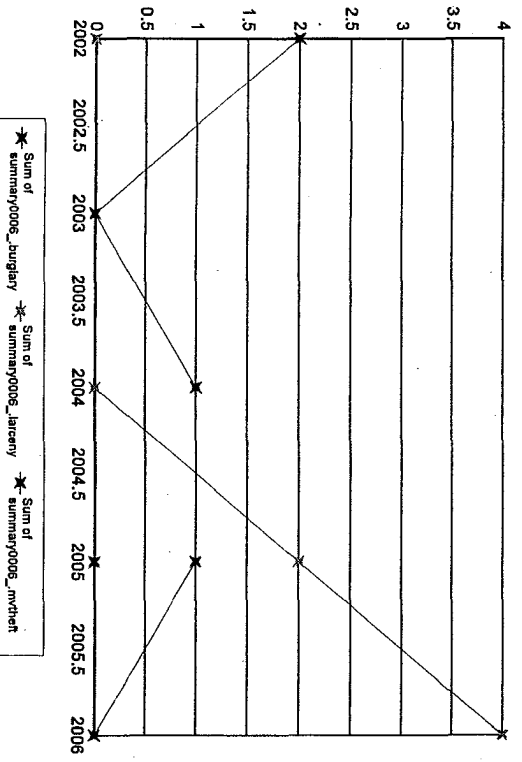
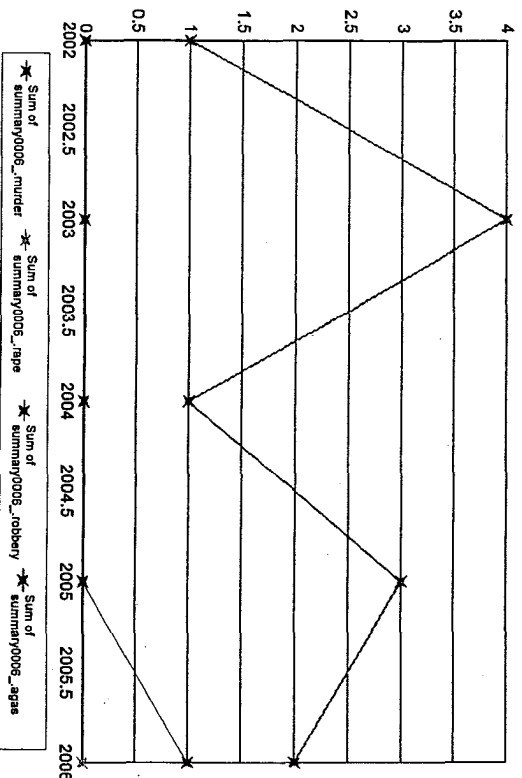
Months Reporting	Violent	Murder	Rape	Robbery		Gun %	Aggrav. Assault		Property	Burglary	Larceny	MVTheft
				Total	W/Gun		Total	W/Gun				
2002	12	0	0	0	0	0.00	0	0	0	0	0	0
2004	12	0	0	0	0	0.00	0	0	0	0	0	0
2005	11	0	0	0	0	0.00	0	0	0	0	0	0
2006	12	1	0	0	0	0.00	1	0	0	0	0	0



Notes on data: "Months Reporting" indicate the number of months of data received from this agency; "Violent" is the sum of the number of Murder, Rape, Total Robbery and Total Aggravated Assaults; "Property" is the sum of Burglary, Larceny, and Motor Vehicle Theft. If "NIBRS Reporting Agency?" is "Y", then more detailed crime and incident data is available from this agency.

SP Middlesex-Weston

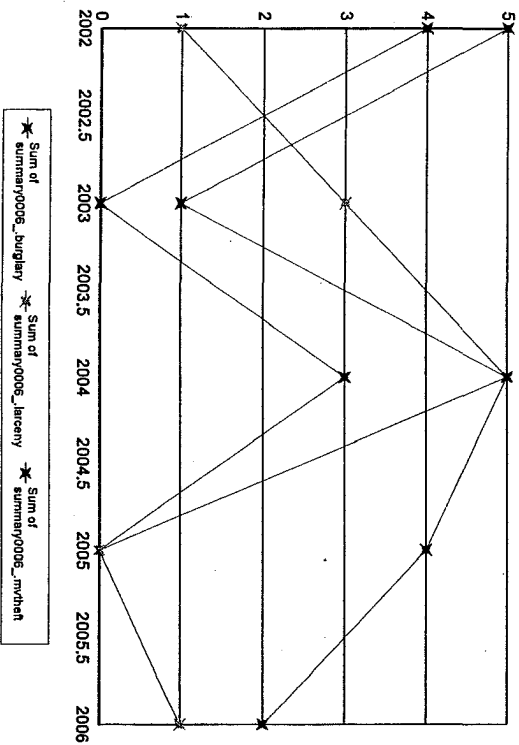
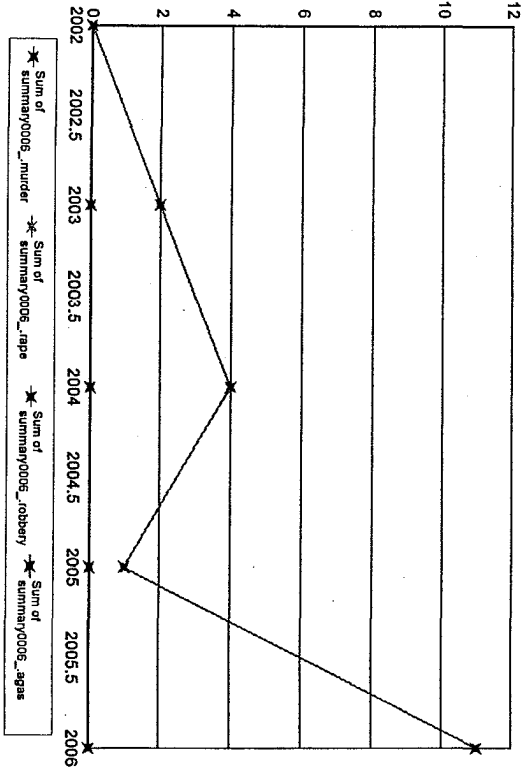
Months Reporting	Violent	Murder	Rape	Robbery	Total W/Gun	% Gun	Aggrav. Assault	Total W/Gun	% Gun	Property	Burglary	Larceny	MVTheft
2002	12	1	0	0	0	0.00	1	0	0.00	2	0	0	2
2003	12	4	0	0	0	0.00	4	0	0.00	0	0	0	0
2004	12	1	0	0	0	0.00	1	0	0.00	1	0	0	1
2005	12	3	0	0	0	0.00	3	0	0.00	3	0	2	1
2006	12	3	0	0	1	1100.00	2	0	0.00	4	0	4	0



Notes on data: "Months Reporting" indicate the number of months of data received from this agency; "Violent" is the sum of the number of Murder, Rape, Total Robbery and Total Aggravated Assaults; "Property" is the sum of Burglary, Larceny, and Motor Vehicle Theft. If "NIBRS Reporting Agency?" is "Y", then more detailed crime and incident data is available from this agency.

SP Norfolk-Frammingham

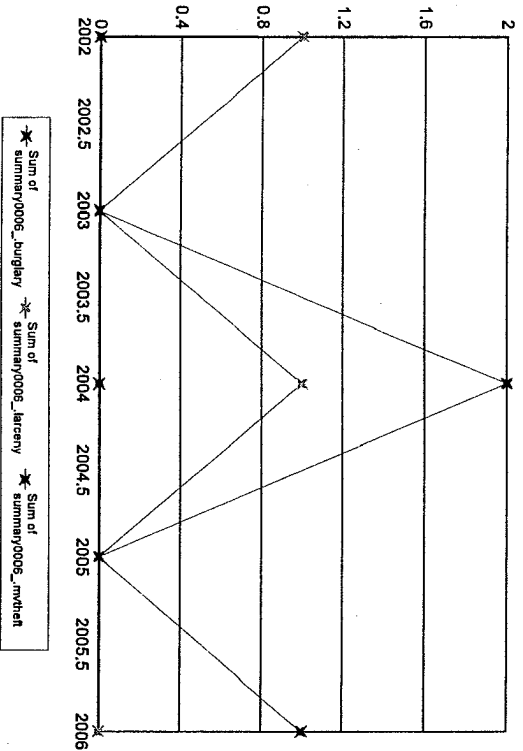
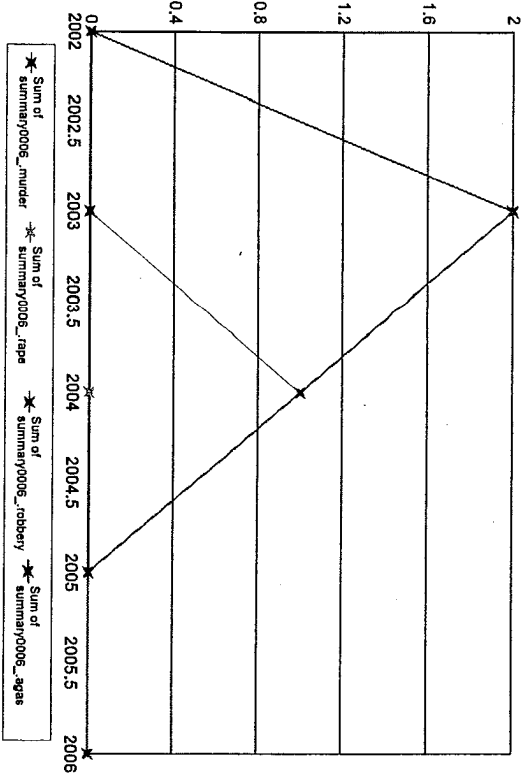
Months Reporting	Violent	Murder	Rape	Robbery		Aggrav. Assault	Gun	Property	Burglary	Larceny	MVTheft
				Total	W/Gun						
2002	12	0	0	0	0	0	0.00	10	4	1	5
2003	12	2	0	0	0	2	0.00	4	0	3	1
2004	12	4	0	0	0	4	0.00	13	3	5	5
2005	4	1	0	0	0	1	0.00	4	0	0	4
2006	12	11	0	0	0	11	0.00	1	9.09	4	1



Notes on data: "Months Reporting" indicate the number of months of data received from this agency; "Violent" is the sum of the number of Murder, Rape, Total Robbery and Total Aggravated Assaults; "Property" is the sum of Burglary, Larceny, and Motor Vehicle Theft. If "NIBRS Reporting Agency?" is "Y", then more detailed crime and incident data is available from this agency.

SP Norfolk-Middleboro

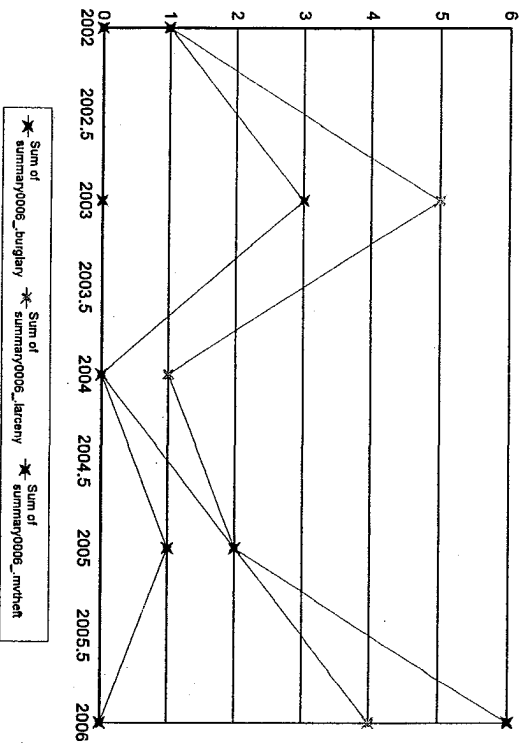
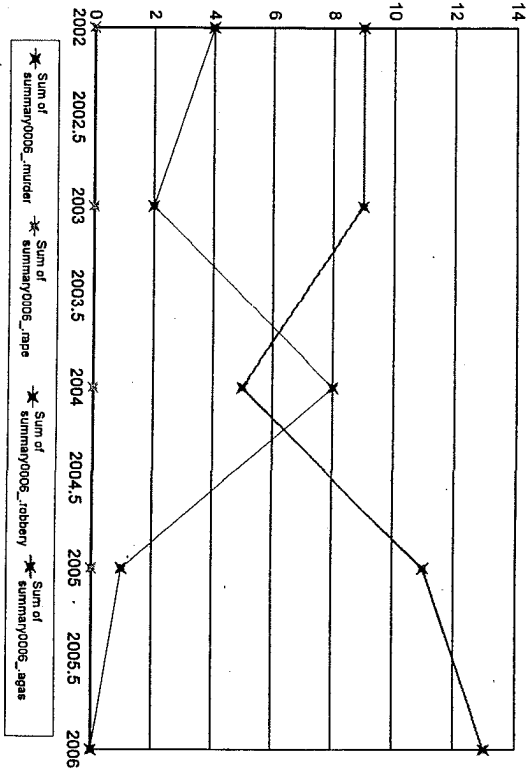
Months Reporting	Violent	Murder	Rape	Robbery Total	W/Gun	% Gun	Aggrav. Assault Total	W/Gun	% Gun	Property	Burglary	Larceny	MV Theft
2002	12	0	0	0	0	0.00	0	0	0.00	1	0	1	0
2003	12	2	0	0	0	0.00	2	0	0.00	0	0	0	0
2004	12	2	0	1	0	0.00	1	0	0.00	3	0	1	2
2005	12	0	0	0	0	0.00	0	0	0.00	0	0	0	0
2006	12	0	0	0	0	0.00	0	0	0.00	2	1	0	1



Notes on data: "Months Reporting" indicate the number of months of data received from this agency; "Violent" is the sum of the number of Murder, Rape, Total Robbery and Total Aggravated Assaults; "Property" is the sum of Burglary, Larceny, and Motor Vehicle Theft." If "NIBRS Reporting Agency?" is "Y", then more detailed crime and incident data is available from this agency.

SP Plymouth-Middleboro

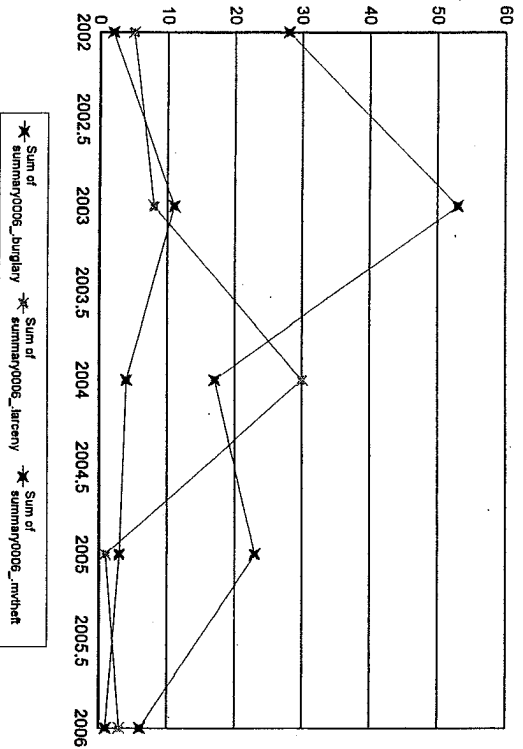
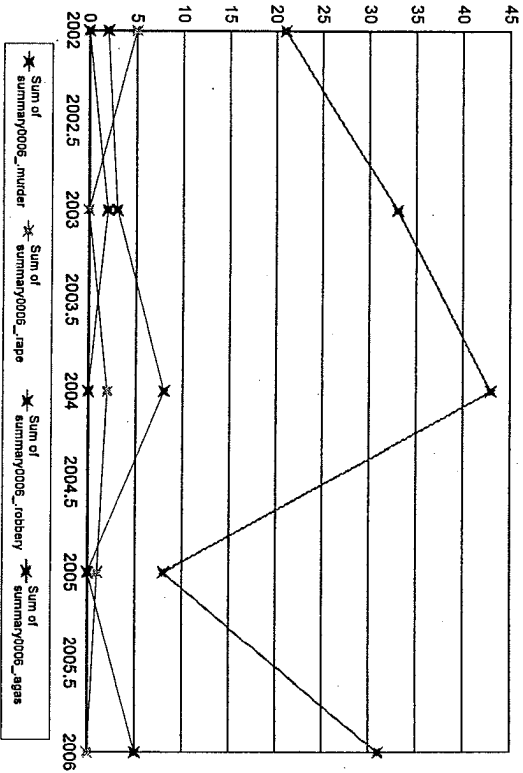
Months Reporting	Violent	Murder	Rape	Robbery		Aggrav. Assault	Property	Larceny	MV Theft
				Total	W/Gun				
2002	12	13	0	4	1 25.00	9	2	1	1
2003	12	11	0	2	1 50.00	9	8	5	3
2004	12	13	0	8	2 25.00	5	1	1	0
2005	12	12	0	1	1100.00	11	5	2	2
2006	12	13	0	0	0 0.00	13	10	4	6



Notes on data: "Months Reporting" indicate the number of months of data received from this agency. "Violent" is the sum of the number of Murder, Rape, Total Robbery and Total Aggravated Assaults. "Property" is the sum of Burglary, Larceny, and Motor Vehicle Theft. If "NIBRS Reporting Agency?" is "Y", then more detailed crime and incident data is available from this agency.

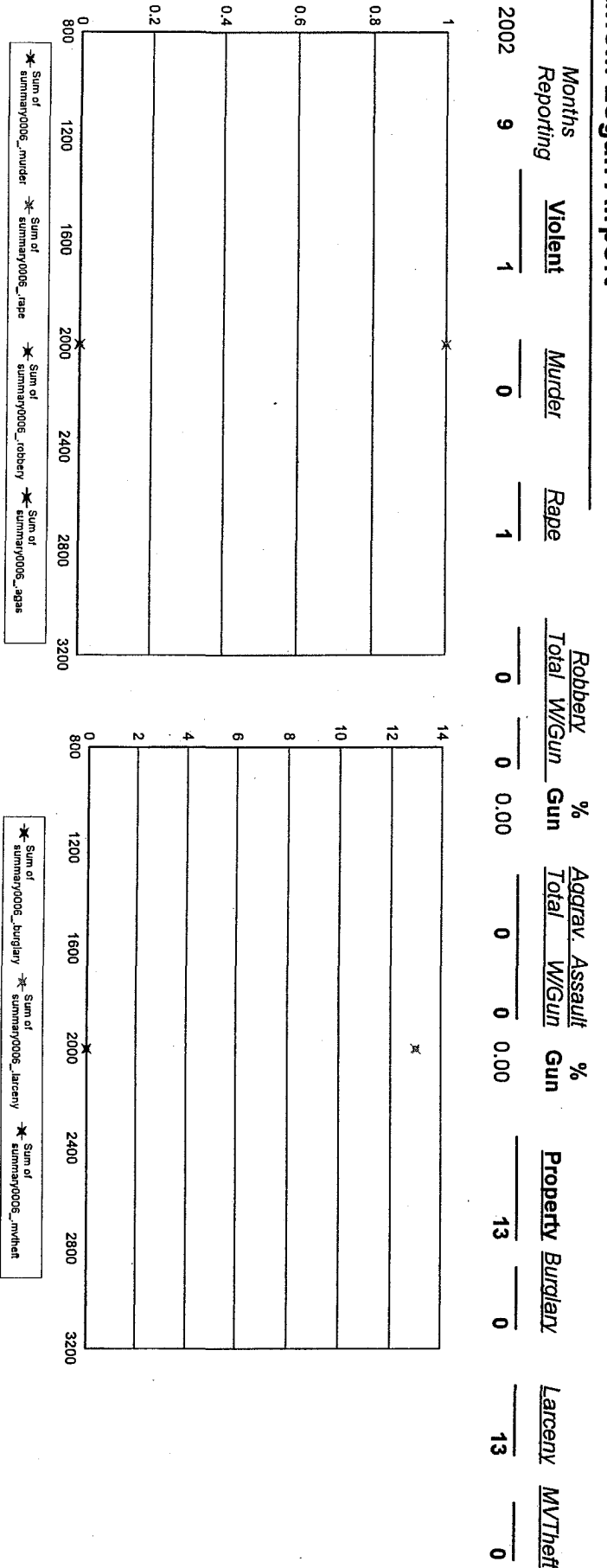
SP Suffolk-Framingham

Months Reporting	Violent	Murder	Rape	Robbery Total	W/Gun	% Gun	Aggrav. Assault Total	W/Gun	% Gun	Property	Burglary	Larceny	MV/Theft
2002	12	28	0	2	0	0.00	21	0	0.00	35	2	5	28
2003	12	38	2	3	1	33.33	33	0	0.00	72	11	8	53
2004	12	53	0	8	1	12.50	43	1	2.33	51	4	30	17
2005	4	9	0	0	0	0.00	8	1	12.50	27	3	1	23
2006	12	36	0	5	4	80.00	31	7	22.58	10	1	3	6



Notes on data: "Months Reporting" indicate the number of months of data received from this agency; "Violent" is the sum of the number of Murder, Rape, Total Robbery and Total Aggravated Assaults; "Property" is the sum of Burglary, Larceny, and Motor Vehicle Theft. If "NIBRS Reporting Agency?" is "Y", then more detailed crime and incident data is available from this agency.

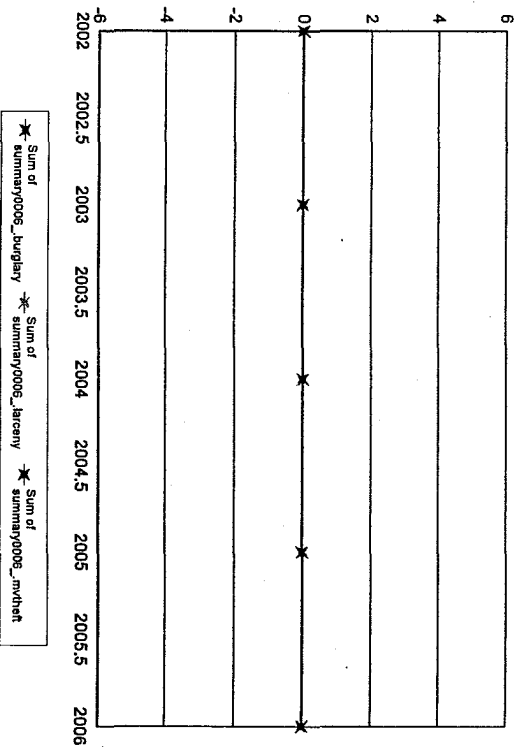
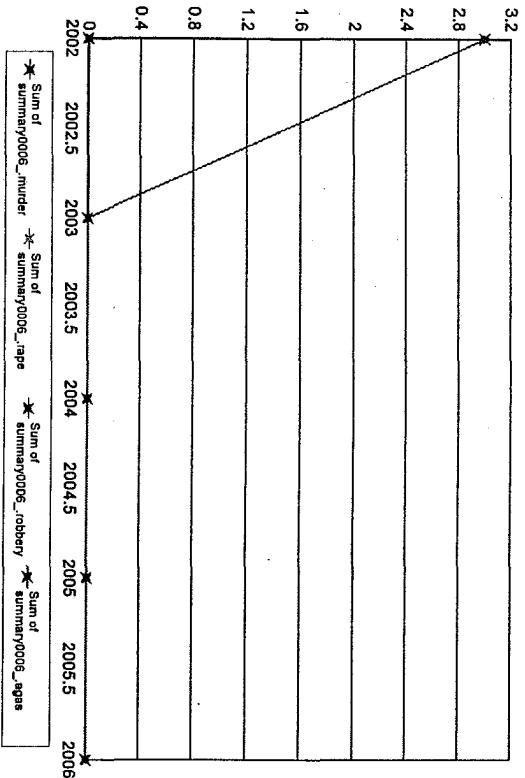
SP Suffolk-Logan Airport



Notes on data: "Months Reporting" indicate the number of months of data received from this agency. "Violent" is the sum of the number of Murder, Rape, Total robbery and Total Aggravated Assaults; "Property" is the sum of Burglary, Larceny, and Motor Vehicle Theft. If "NIBRS Reporting Agency?" is "Y", then more detailed crime and incident data is available from this agency.

SP Suffolk-Weston

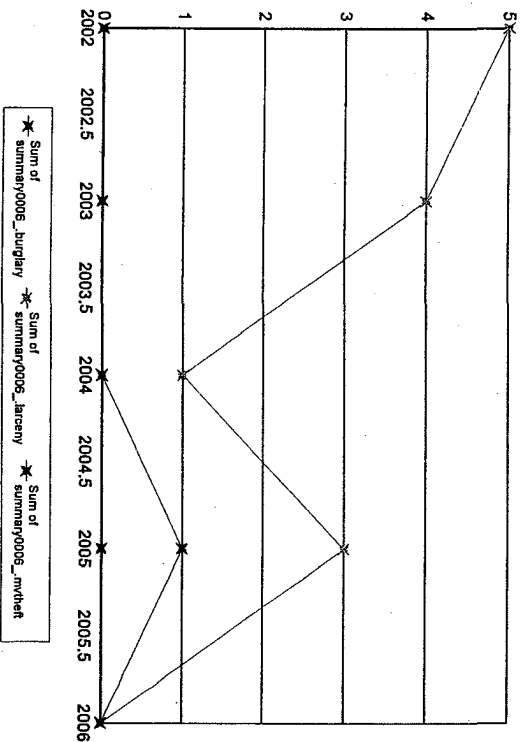
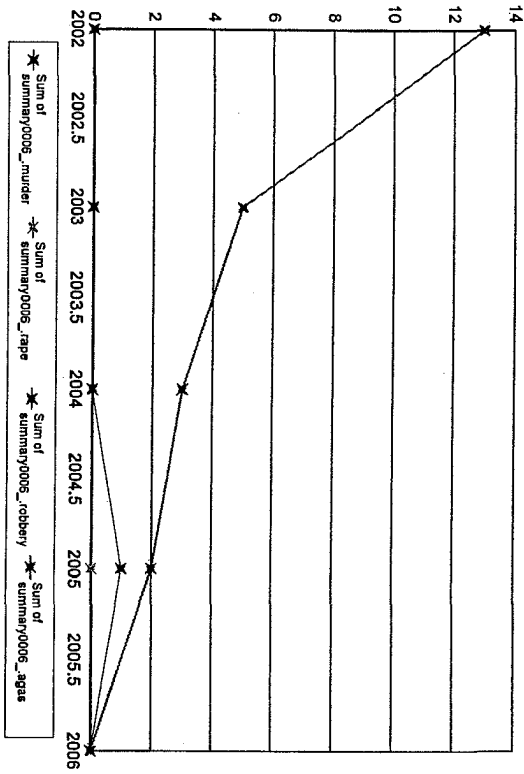
Months Reporting	Violent	Murder	Rape	Robbery		Aggrav. Assault		Property Burglary	Larceny	MV Theft
				Total	W/Gun	Total	W/Gun			
2002	12	3	0	0	0	3	1 33.33	0	0	0
2003	12	0	0	0	0	0	0 0.00	0	0	0
2004	12	0	0	0	0	0	0 0.00	0	0	0
2005	12	0	0	0	0	0	0 0.00	0	0	0
2006	12	0	0	0	0	0	0 0.00	0	0	0



Notes on data: "Months Reporting" indicate the number of months of data received from this agency; "Violent" is the sum of the number of Murder, Rape, Total Robbery and Total Aggravated Assaults; "Property" is the sum of Burglary, Larceny, and Motor Vehicle Theft. If "NIBRS Reporting Agency?" is "Y", then more detailed crime and incident data is available from this agency.

SP Worcester-Weston

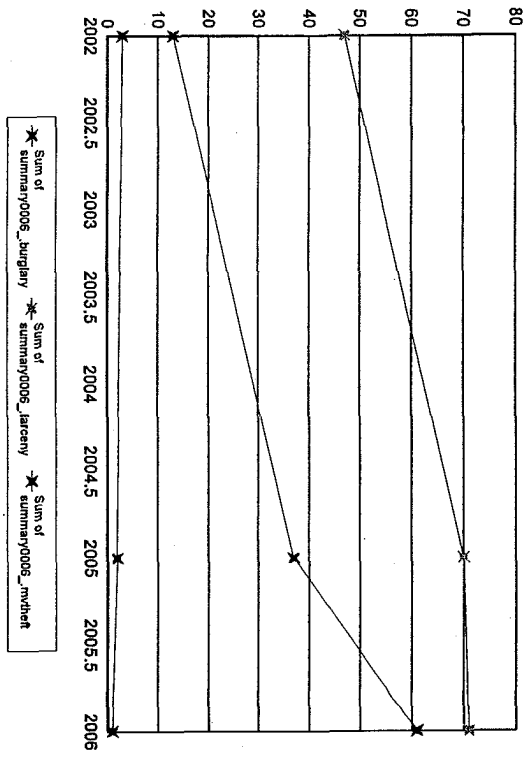
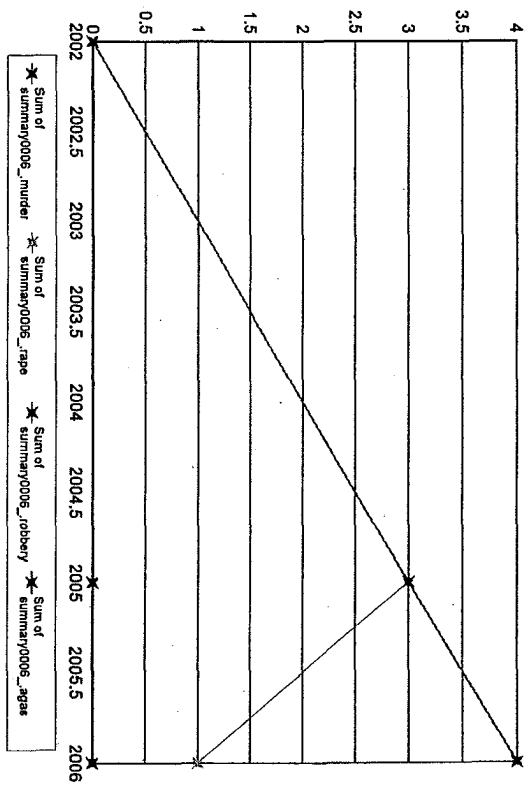
Months Reporting	Violent	Murder	Rape	Robbery		Aggrav. Assault		Property		Larceny		MV Theft
				Total	W/Gun	Total	W/Gun	Burglary	Burglary	Larceny	MV Theft	
2002	12	13	0	0	0.00	13	0.00	5	0	5	0	
2003	12	5	0	0	0.00	5	0.00	4	0	4	0	
2004	12	3	0	0	0.00	3	0.00	1	0	1	0	
2005	12	3	0	1	1100.00	2	0.00	4	0	3	1	
2006	12	0	0	0	0.00	0	0.00	0	0	0	0	



Notes on data: "Months Reporting" indicate the number of months of data received from this agency; "Violent" is the sum of the number of Murder, Rape, Total Robbery and Total Aggravated Assaults; "Property" is the sum of Burglary, Larceny, and Motor Vehicle Theft. If "NIBRS Reporting Agency?" is "Y", then more detailed crime and incident data is available from this agency.

Salem SC

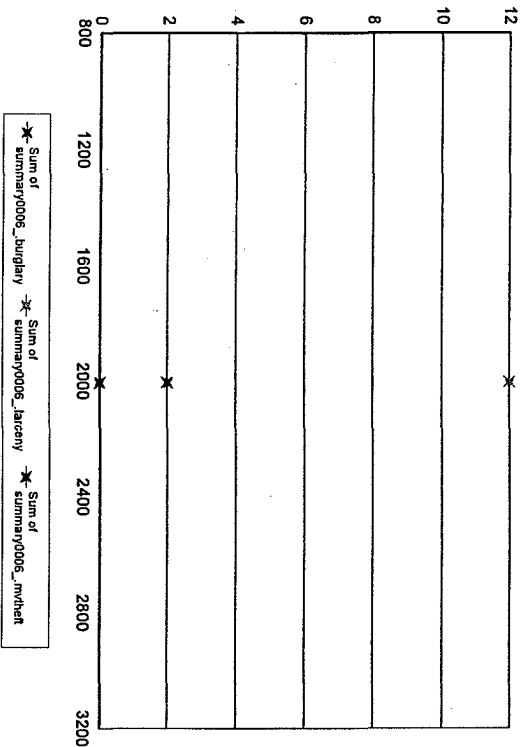
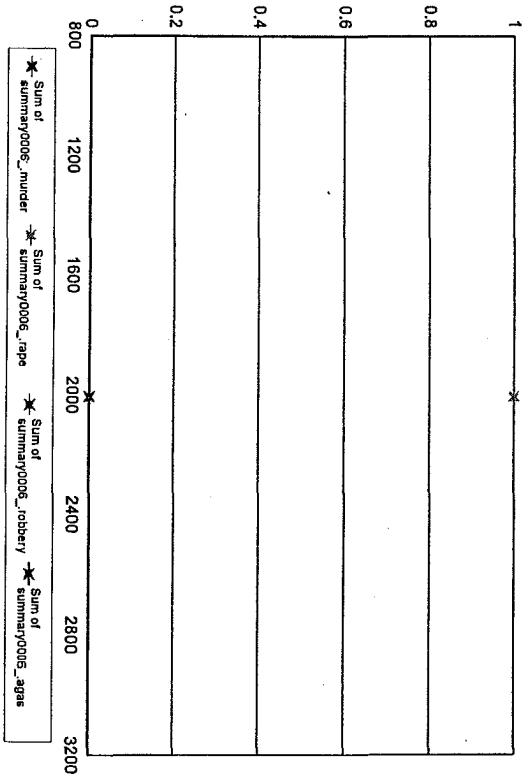
Months Reporting	Violent	Murder	Rape	Robbery		Aggrav. Assault		Property	Burglary	Larceny	MVTheft
				Total	W/Gun	Total	W/Gun				
2002	8	0	0	0	0	0	0	63	13	47	3
2005	12	6	0	0	0	3	0	109	37	70	2
2006	12	5	0	0	0	4	0	133	61	71	1



Notes on data: "Months Reporting" indicate the number of months of data received from this agency. "Violent" is the sum of the number of Murder, Rape, Total Robbery and Total Aggravated Assaults; "Property" is the sum of Burglary, Larceny, and Motor Vehicle Theft. If "NIBRS Reporting Agency?" is "Y", then more detailed crime and incident data is available from this agency.

Smith College

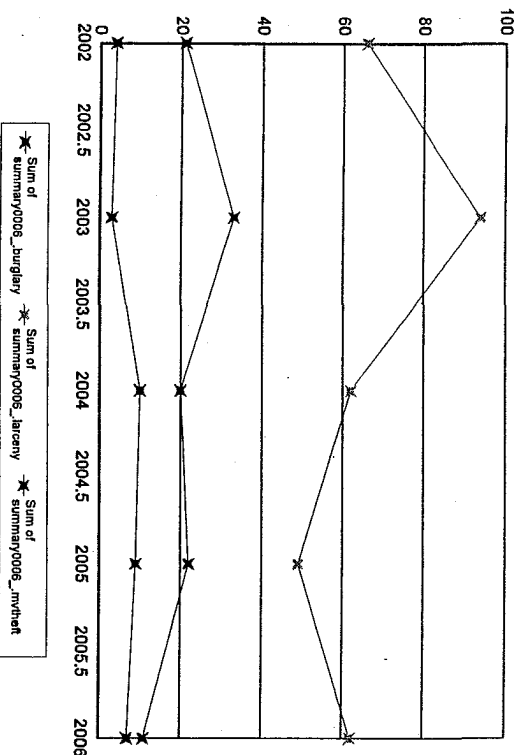
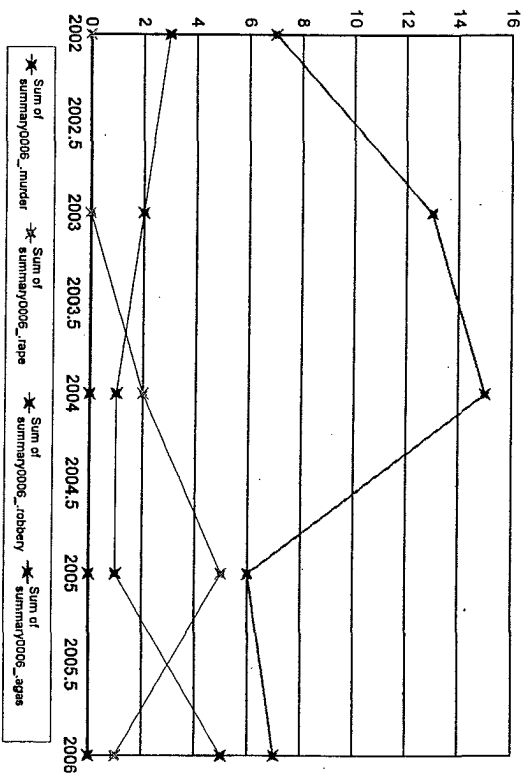
Months Reporting	Violent	Murder	Rape	Robbery Total	W/Gun	% Gun	Aggrav. Assault Total	% W/Gun	% Gun	Property	Burglary	Larceny	MV Theft
2006	3	1	0	0	0	0.00	0	0	0.00	14	2	12	0



Notes on data: "Months Reporting" indicate the number of months of data received from this agency; "Violent" is the sum of the number of Murder, Rape, Total Robbery and Total Aggravated Assaults; "Property" is the sum of Burglary, Larceny, and Motor Vehicle Theft. If "NIBRS Reporting Agency?" is "Y", then more detailed crime and incident data is available from this agency.

Springfield College

Months Reporting	Violent	Murder	Rape	Robbery		Aggrav. Assault	Property	Burglary	Larceny	MVTheft
				Total	% W/Gun					
2002	12	10	0	3	0	7	91	21	66	4
2003	12	15	0	2	0	13	130	33	94	3
2004	12	18	0	1	0	15	92	20	62	10
2005	12	12	0	1	0	6	80	22	49	9
2006	12	13	0	5	0	7	80	11	62	7

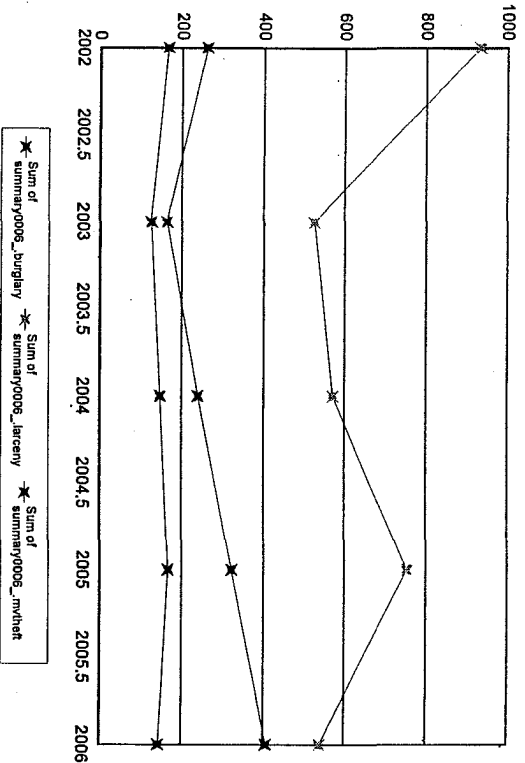
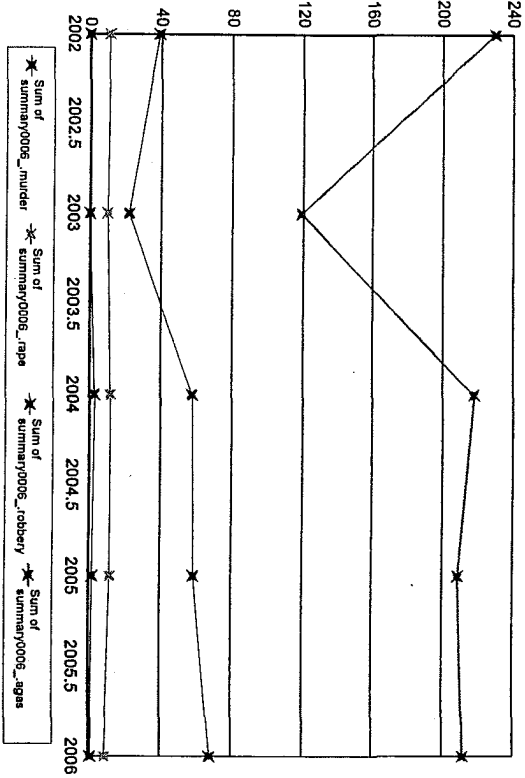


Notes on data: "Months Reporting" indicate the number of months of data received from this agency. "Violent" is the sum of the number of Murder, Rape, Total Robbery and Total Aggravated Assaults; "Property" is the sum of Burglary, Larceny, and Motor Vehicle Theft. If "NIBRS Reporting Agency?" is "Y", then more detailed crime and incident data is available from this agency.

Notes on data: "Months Reporting" indicate the number of months of data received from this agency. "Violent" is the sum of the number of Murder, Rape, Total Robbery and Total Aggravated Assaults; "Property" is the sum of Burglary, Larceny, and Motor Vehicle Theft. If "NIBRS Reporting Agency?" is "Y", then more detailed crime and incident data is available from this agency.

Taunton

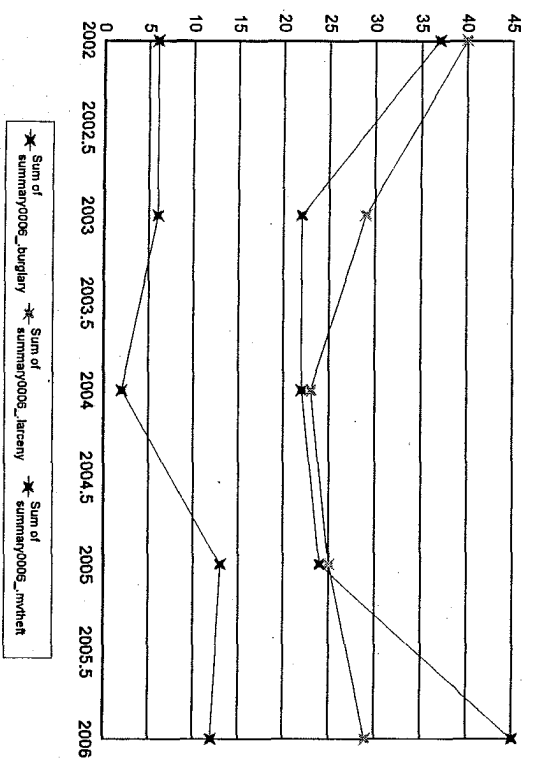
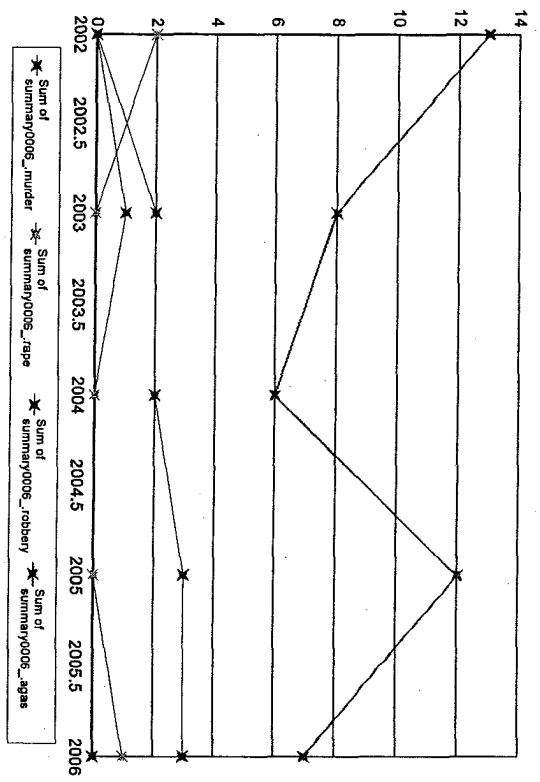
Months Reporting	Violent	Murder	Rape	Robbery		Aggrav. Assault	Gun		Property	Burglary	Larceny	MVT theft
				Total	W/Gun		Total	W/Gun				
2002	12	280	0	11	39	230	15	28.21	1,361	261	934	166
2003	7	151	0	10	22	119	6	22.73	814	164	524	126
2004	12	291	3	12	58	218	24	46.55	959	240	571	148
2005	12	282	2	12	59	209	28	35.59	1,243	322	754	167
2006	12	290	1	9	68	212	18	44.12	1,090	407	539	144



Notes on data: "Months Reporting" indicate the number of months of data received from this agency; "Violent" is the sum of the number of Murder, Rape, Total Robbery and Total Aggravated Assaults; "Property" is the sum of Burglary, Larceny, and Motor Vehicle Theft. If "NIBRS Reporting Agency?" is "Y", then more detailed crime and incident data is available from this agency.

Templeton

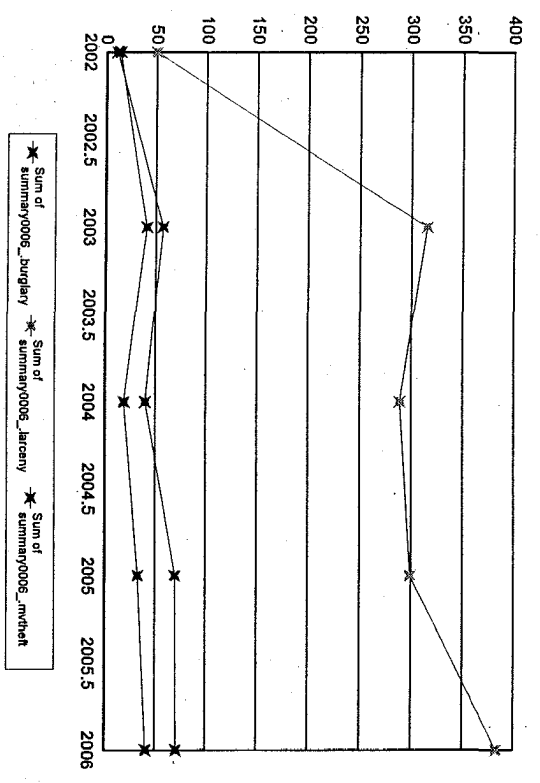
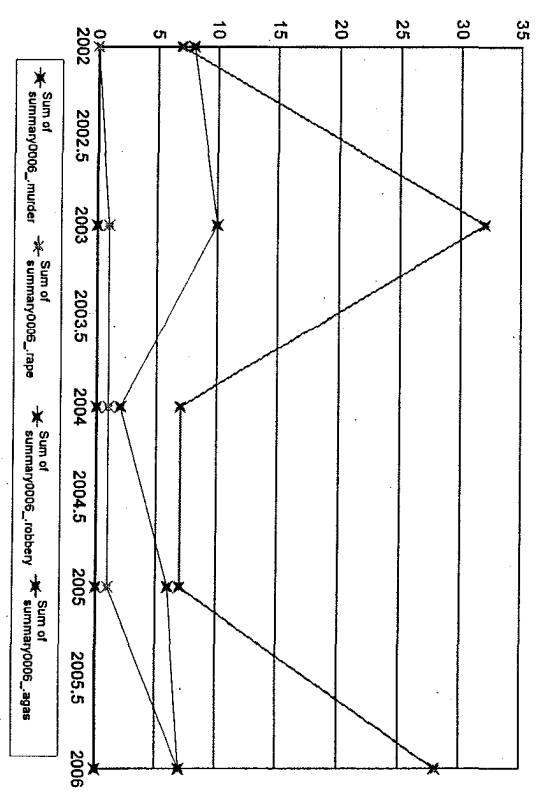
Months Reporting	Violent	Murder	Rape	Robbery	Total W/Gun	% Gun	Aggrav. Assault	Total W/Gun	% Gun	Property	Burglary	Larceny	MVTheft
2002	12	15	0	0	0	0.00	13	1	7.69	83	37	40	6
2003	12	11	1	2	1	50.00	8	1	12.50	57	22	29	6
2004	12	8	0	2	1	50.00	6	0	0.00	47	22	23	2
2005	12	15	0	3	1	33.33	12	1	8.33	62	24	25	13
2006	12	11	0	3	0	0.00	7	0	0.00	86	45	29	12



Notes on data: "Months Reporting" indicate the number of months of data received from this agency. "Violent" is the sum of the number of Murder, Rape, Total Robbery and Total Aggravated Assaults; "Property" is the sum of Burglary, Larceny, and Motor Vehicle Theft. If "NIBRS Reporting Agency?" is "Y", then more detailed crime and incident data is available from this agency.

Tewksbury

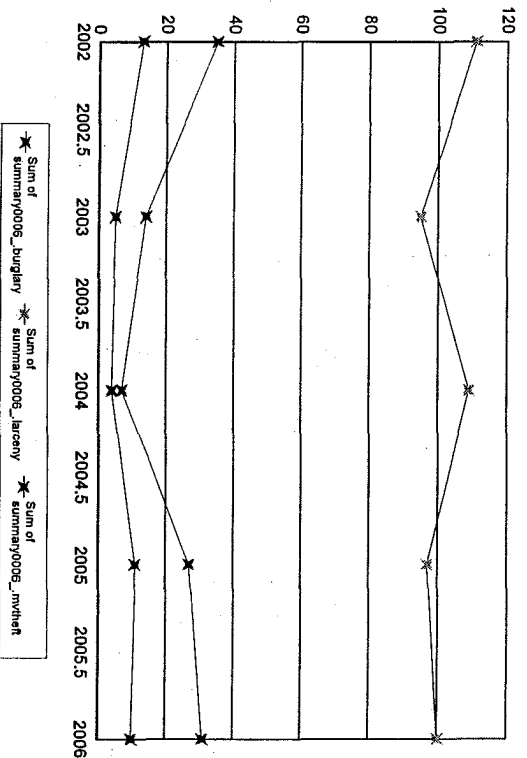
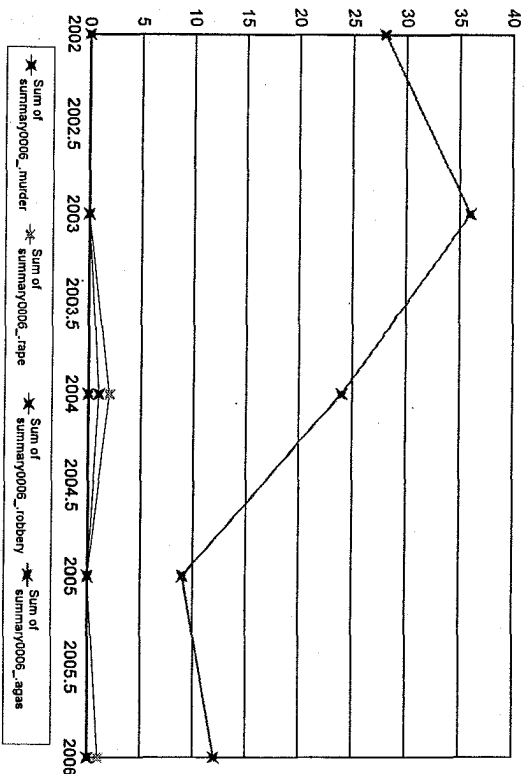
Months Reporting	Violent	Murder	Rape	Robbery	Total W/Gun	% Gun	Aggrav. Assault	Total W/Gun	% Gun	Property	Burglary	Larceny	MV/Theft
2002	4	0	0	8	5	62.50	7	1	14.29	75	11	50	14
2003	12	43	0	10	4	40.00	32	1	3.13	413	57	315	41
2004	12	10	0	2	1	50.00	7	0	0.00	348	40	289	19
2005	12	14	0	6	0	0.00	7	1	14.29	402	70	299	33
2006	12	42	0	7	2	28.57	28	1	3.57	495	71	383	41



Notes on data: "Months Reporting" indicate the number of months of data received from this agency; "Violent" is the sum of the number of Murder, Rape, Total Robbery and Total Aggravated Assaults; "Property" is the sum of Burglary, Larceny, and Motor Vehicle Theft. If "NIBRS Reporting Agency?" is "Y", then more detailed crime and incident data is available from this agency.

Tisbury

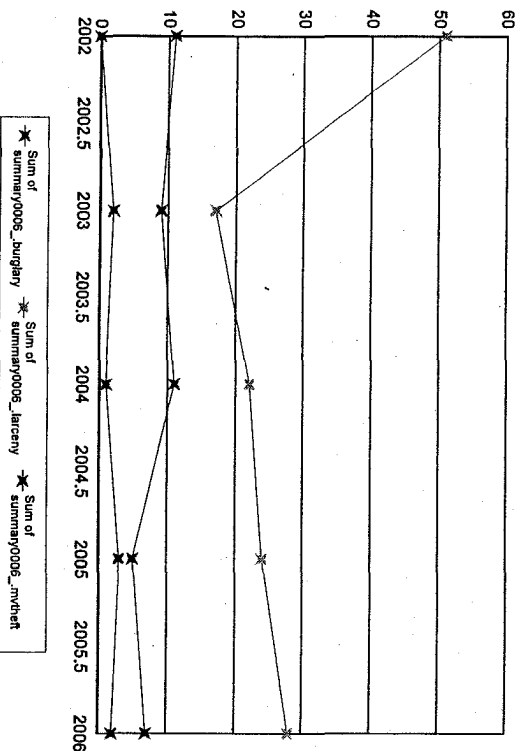
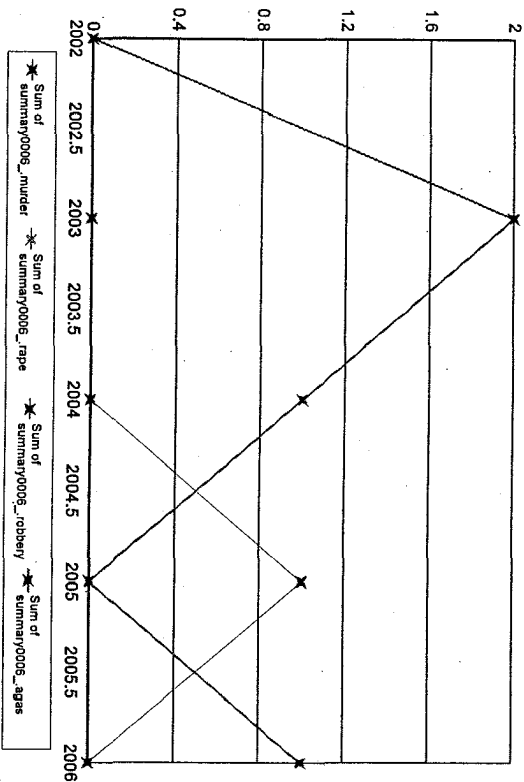
Months Reporting	Violent	Murder	Rape	Robbery	Total W/Gun	% Gun	Aggrav. Assault	% Gun	Property	Burglary	Larceny	MV/Theft
2002	28	0	0	0	0	0.00	28	1 3.57	159	35	111	13
2003	36	0	0	0	0	0.00	36	0 0.00	114	14	95	5
2004	27	0	0	1	0	0.00	24	1 4.17	120	7	109	4
2005	9	0	0	0	0	0.00	9	0 0.00	135	27	97	11
2006	13	0	1	0	0	0.00	12	0 0.00	141	31	100	10



Notes on data: "Months Reporting" indicate the number of months of data received from this agency; "Violent" is the sum of the number of Murder, Rape, Total Robbery and Total Aggravated Assaults; "Property" is the sum of Burglary, Larceny, and Motor Vehicle Theft; "If "NIBRS Reporting Agency?" is "Y", then more detailed crime and incident data is available from this agency.

Topfield

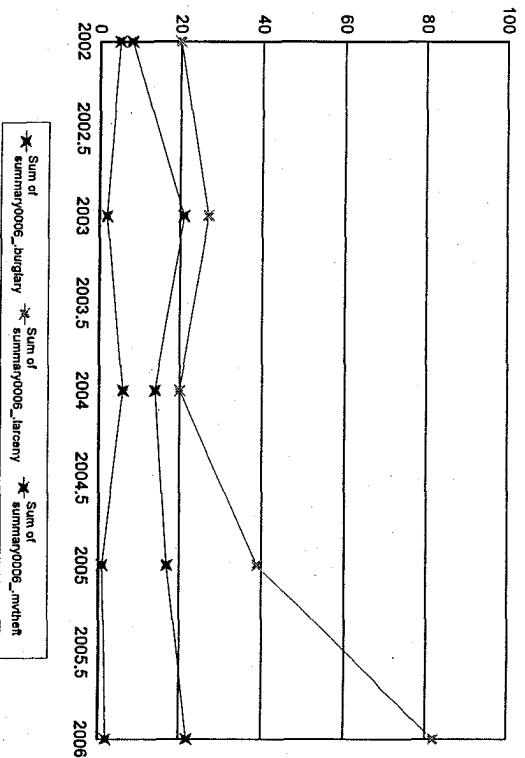
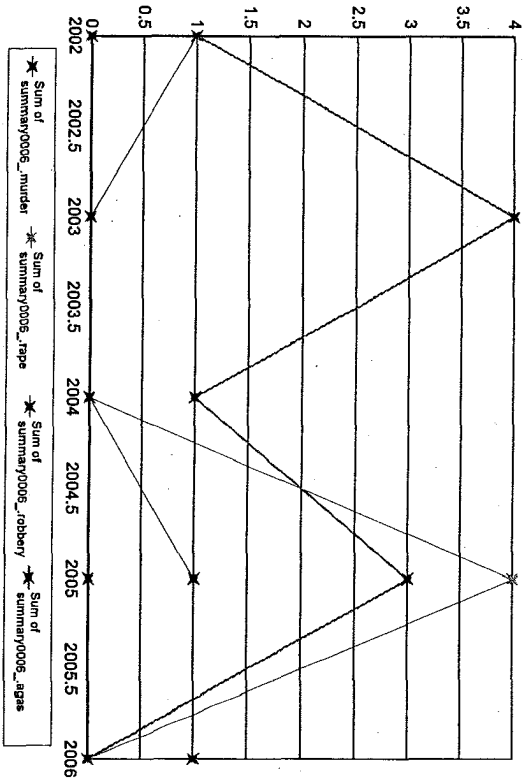
Months Reporting	Violent	Murder	Rape	Robbery Total W/Gun	% Gun	Aggrav. Assault Total W/Gun	% Gun	Property Burglary	Larceny	MV/Theft
2002	12	0	0	0	0.00	0	0.00	62	11	0
2003	10	2	0	0	0.00	2	0.00	28	9	2
2004	12	1	0	0	0.00	1	0.00	34	11	1
2005	10	1	0	1	0.00	0	0.00	32	5	3
2006	10	1	0	0	0.00	1	0.00	37	7	2



Notes on data: "Months Reporting" indicate the number of months of data received from this agency; "Violent" is the sum of the number of Murder, Rape, Total Robbery and Total Aggravated Assaults; "Property" is the sum of Burglary, Larceny, and Motor Vehicle Theft. If "NIBRS Reporting Agency?" is "Y", then more detailed crime and incident data is available from this agency.

Townsend

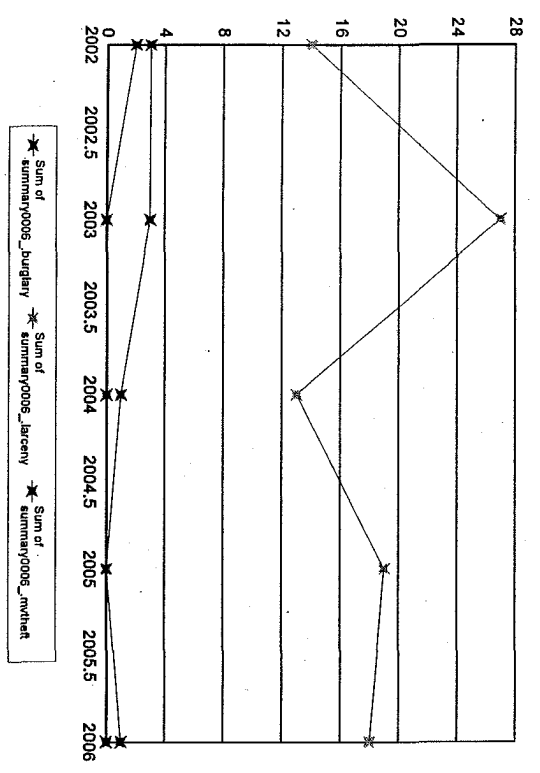
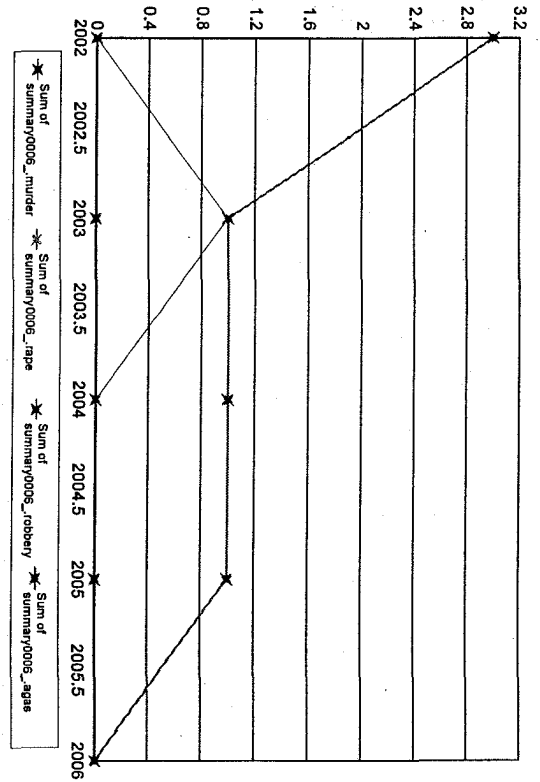
Months Reporting	Violent	Murder	Rape	Robbery Total	W/Gun %	Aggrav. Assault Total	W/Gun %	Property	Burglary	Larceny	MV/Theft
2002	12	3	0	1	0	1	0.00	33	8	20	5
2003	12	4	0	0	0	4	0.00	50	21	27	2
2004	12	1	0	0	0	1	0.00	40	14	20	6
2005	12	8	0	1	0	3	0.00	57	17	39	1
2006	12	1	0	1	0	0	0.00	106	22	82	2



Notes on data: "Months Reporting" indicate the number of months of data received from this agency; "Violent" is the sum of the number of Murder, Rape, Total Robbery and Total Aggravated Assaults; "Property" is the sum of Burglary, Larceny, and Motor Vehicle Theft." If "NIBRS Reporting Agency?" is "Y", then more detailed crime and incident data is available from this agency.

Truro

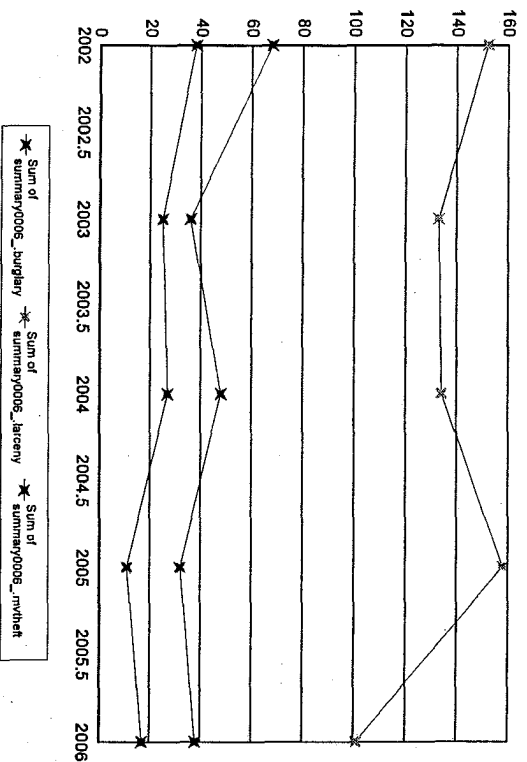
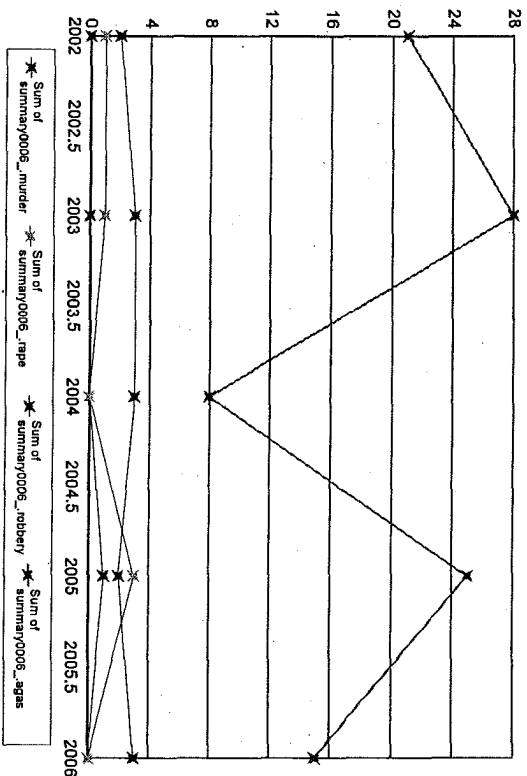
Months Reporting	Violent	Murder	Rape	Robbery Total	W/Gun	% Gun	Aggrav. Assault Total	W/Gun	% Gun	Property	Burglary	Larceny	MVTheft
2002	12	3	0	0	0	0.00	3	0	0.00	19	3	14	2
2003	10	2	0	0	0	0.00	1	0	0.00	30	3	27	0
2004	11	1	0	0	0	0.00	1	1100.00		14	1	13	0
2005	11	1	0	0	0	0.00	1	0	0.00	19	0	19	0
2006	10	0	0	0	0	0.00	0	0	0.00	19	1	18	0



Notes on data: "Months Reporting" indicate the number of months of data received from this agency; "Violent" is the sum of the number of Murder, Rape, Total Robbery and Total Aggravated Assaults; "Property" is the sum of Burglary, Larceny, and Motor Vehicle Theft. If "NIBRS Reporting Agency?" is "Y", then more detailed crime and incident data is available from this agency.

Tyngsboro

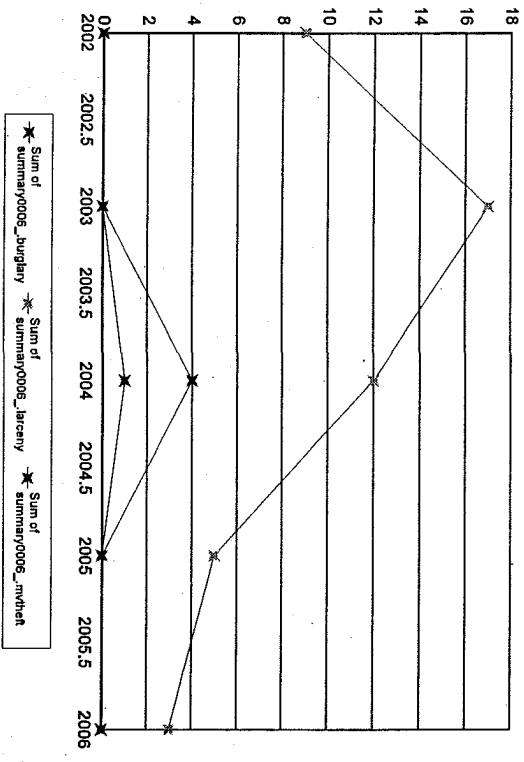
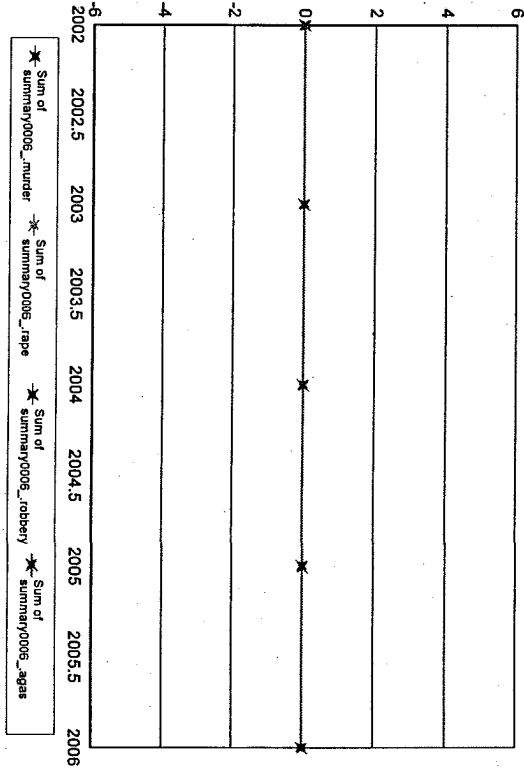
Months Reporting	Violent	Murder	Rape	Robbery	Total W/Gun	% Gun	Aggrav. Assault	% Gun	Property	Burglary	Larceny	MVTheft
2002	24	0	1	2	0	0.00	21	0.00	258	68	152	38
2003	32	0	1	3	0	0.00	28	5.17.86	194	36	133	25
2004	11	0	0	3	1	33.33	8	0.00	209	48	134	27
2005	31	1	3	2	1	50.00	25	0.00	201	32	158	11
2006	18	0	0	3	2	66.67	15	1.6.67	156	38	101	17



Notes on data: "Months Reporting" indicate the number of months of data received from this agency; "Violent" is the sum of the number of Murder, Rape, Total obbery and Total Aggravated Assaults; "Property" is the sum of Burglary, Larceny, and Motor Vehicle Theft. If "NIBRS Reporting Agency?" is "Y", then more detailed crime and incident data is available from this agency.

Tufts U Worcester

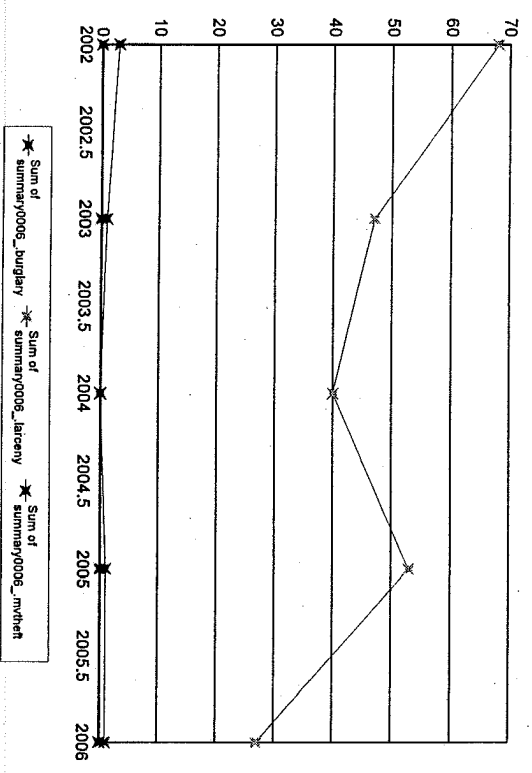
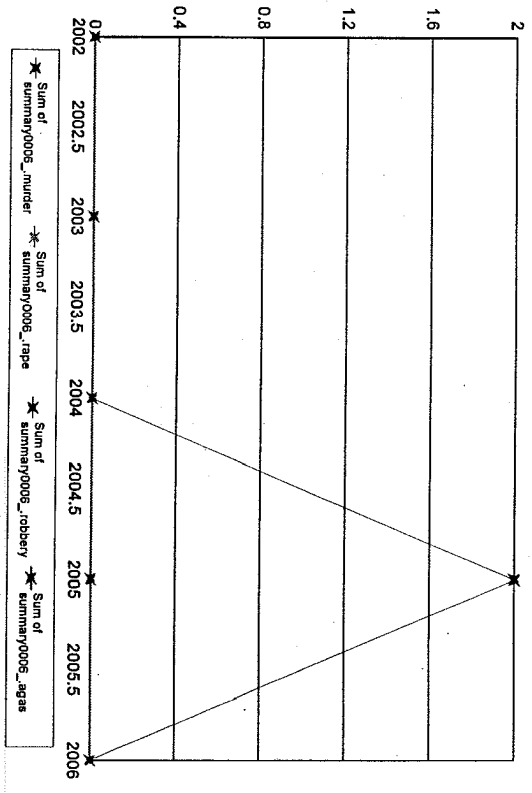
Months Reporting	Violent	Murder	Rape	Robbery Total	W/Gun	% Gun	Aggrav. Assault Total	% Gun	Property Burglary	Larceny	MVTheft
2002	12	0	0	0	0	0.00	0	0.00	9	0	0
2003	12	0	0	0	0	0.00	0	0.00	17	0	0
2004	12	0	0	0	0	0.00	0	0.00	17	4	1
2005	12	0	0	0	0	0.00	0	0.00	5	0	0
2006	12	0	0	0	0	0.00	0	0.00	3	0	0



Notes on data: "Months Reporting" indicate the number of months of data received from this agency; "Violent" is the sum of the number of Murder, Rape, Total Robbery and Total Aggravated Assaults; "Property" is the sum of Burglary, Larceny, and Motor Vehicle Theft. If "NIBRS Reporting Agency?" is "Y", then more detailed crime and incident data is available from this agency.

Tufts U Suffolk

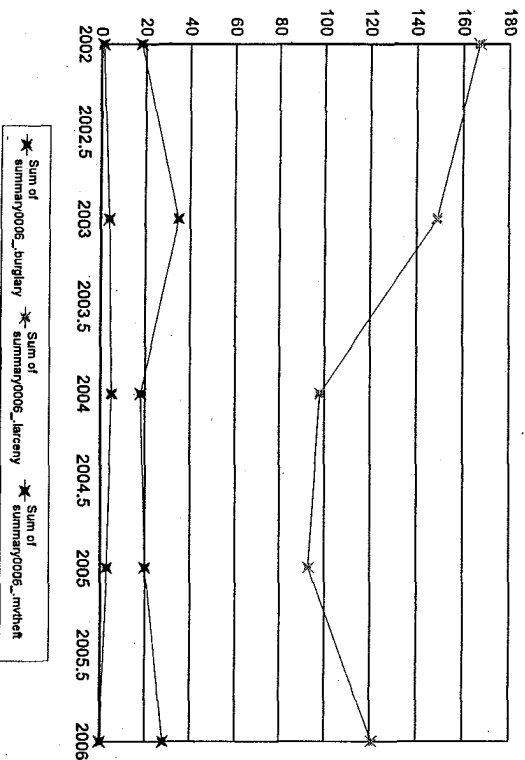
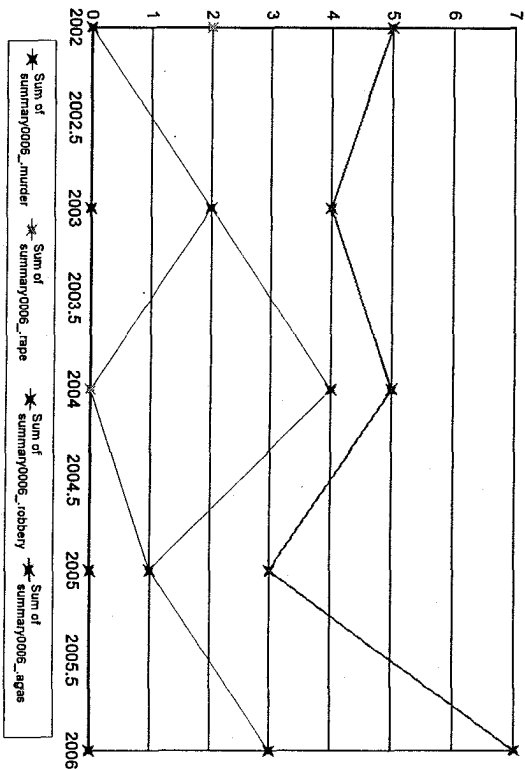
Months Reporting	Violent	Murder	Rape	Robbery Total W/Gun	% Gun	Aggrav. Assault Total W/Gun	% Gun	Property Burglary	Larceny	MVTheft
2002	11	0	0	0	0.00	0	0.00	71	3	68
2003	12	0	0	0	0.00	0	0.00	48	1	47
2004	12	0	0	0	0.00	0	0.00	40	0	40
2005	12	2	0	2	0.00	0	0.00	54	1	53
2006	12	0	0	0	0.00	0	0.00	28	1	27



Notes on data: "Months Reporting" indicate the number of months of data received from this agency; "Violent" is the sum of the number of Murder, Rape, Total Robbery and Total Aggravated Assaults; "Property" is the sum of Burglary, Larceny, and Motor Vehicle Theft. If "NIBRS Reporting Agency?" is "Y", then more detailed crime and incident data is available from this agency.

Tufts University

Months Reporting	Violent	Murder	Rape	Robbery Total	W/Gun %	Aggrav. Assault Total	W/Gun %	Property Burglary	Larceny	MVTheft
2002	12	7	0	0	0.00	5	0.00	186	18	167
2003	12	8	0	2	0.00	4	0.00	188	35	149
2004	12	9	0	4	25.00	5	20.00	121	18	98
2005	12	5	0	1	0.00	3	0.00	116	20	93
2006	12	13	0	3	33.33	7	14.29	149	28	121



Notes on data: "Months Reporting" indicate the number of months of data received from this agency; "Violent" is the sum of the number of Murder, Rape, Total Robbery and Total Aggravated Assaults; "Property" is the sum of Burglary, Larceny, and Motor Vehicle Theft." If "NIBRS Reporting Agency?" is "Y", then more detailed crime and incident data is available from this agency.

Notes on data: "Months Reporting" indicate the number of months of data received from this agency; "Violent" is the sum of the number of Murder, Rape, Total
obbery and Total Aggravated Assaults; "Property" is the sum of Burglary, Larceny, and Motor Vehicle Theft." If "NIBRS Reporting Agency?" is "Y", then more
detailed crime and incident data is available from this agency.